

# CERTIFICATE OF LOCATION OF GOVERNMENT CORNER

County of Anoka

State of Minnesota

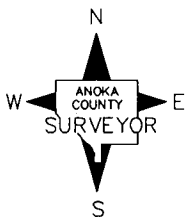
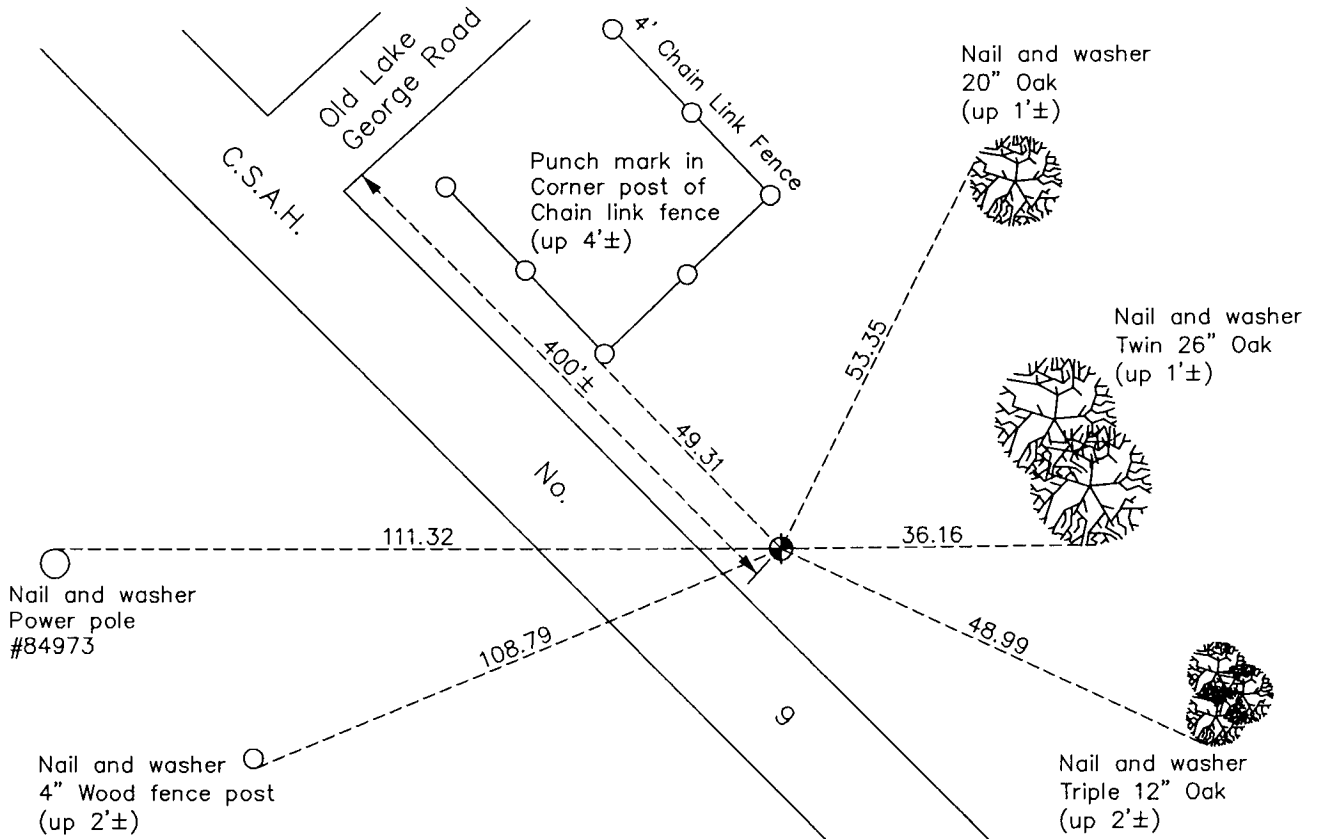
## West 1/4 Corner of Sec. 16 Township 33 Range 24

On the 8th day of September, 1964, the described corner was evidenced by \_\_\_\_\_

and to perpetuate the location of said corner, at the exact location thereof, a permanent marker was placed consisting of a cast iron monument

AND on the 20th day of July, 2011, said permanent marker was found down 0.6'± and the ties were updated

Updated reference ties are as shown below.



N.A.D. 1983 Coordinates  
(1996 Adjustment)

County Project Coordinates	
Northing	<u>214345.9936</u>
Easting	<u>479244.4639</u>
Date	<u>6/07/01</u>

Revision Date  
12/13/11

I hereby certify that this United States public land survey monument record is correct and complete to the best of my knowledge and belief.

*Larry D. Hoium* Date 12/13/11

\_\_\_\_\_  
Larry D. Hoium, Anoka County Surveyor

Minnesota License Number 18165