

# CERTIFICATE OF LOCATION OF GOVERNMENT CORNER

County of Anoka

State of Minnesota

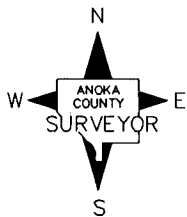
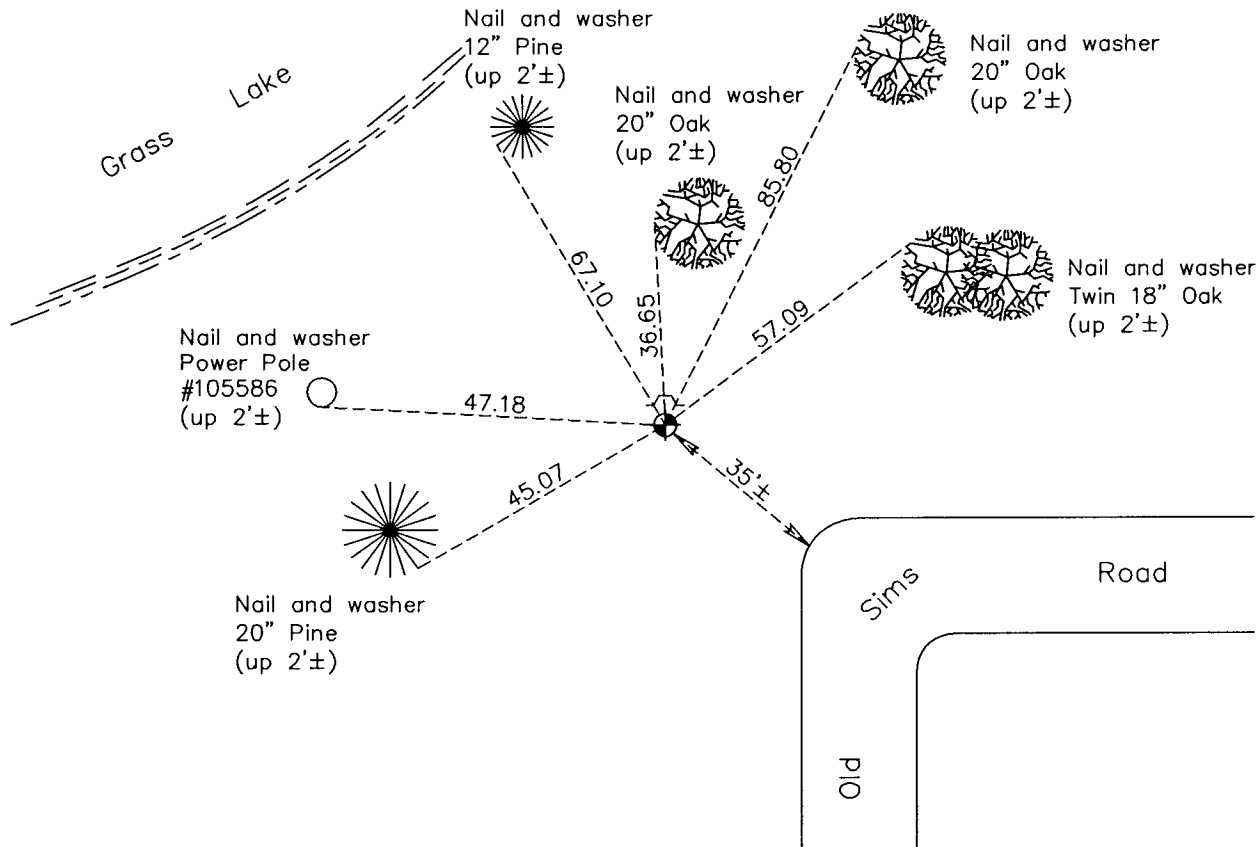
Witness Corner of Sec. 15 Township 33 Range 24  
(on east line of NE1/4)

On the 19th day of March, 1973, the described corner was evidenced by area resurvey

and to perpetuate the location of said corner, at the exact location thereof, a permanent marker was placed consisting of a cast iron monument with a sign and post on the north side

AND on the 10th day of October, 2011, said permanent marker was found up 0.1'± and the ties were updated

Updated reference ties are as shown below.



Revision Date  
6/13/12

N.A.D. 1983 Coordinates  
(1996 Adjustment)

County Project Coordinates	
Northing	<u>216474.2168</u>
Easting	<u>489703.2052</u>
Date	<u>6/07/01</u>

I hereby certify that this United States public land survey monument record is correct and complete to the best of my knowledge and belief.

*Larry D. Hoium* Date 6/13/12

Larry D. Hoium, Anoka County Surveyor

Minnesota License Number 18165