

# CERTIFICATE OF LOCATION OF GOVERNMENT CORNER

County of Anoka

State of Minnesota

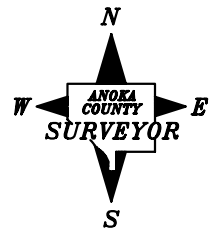
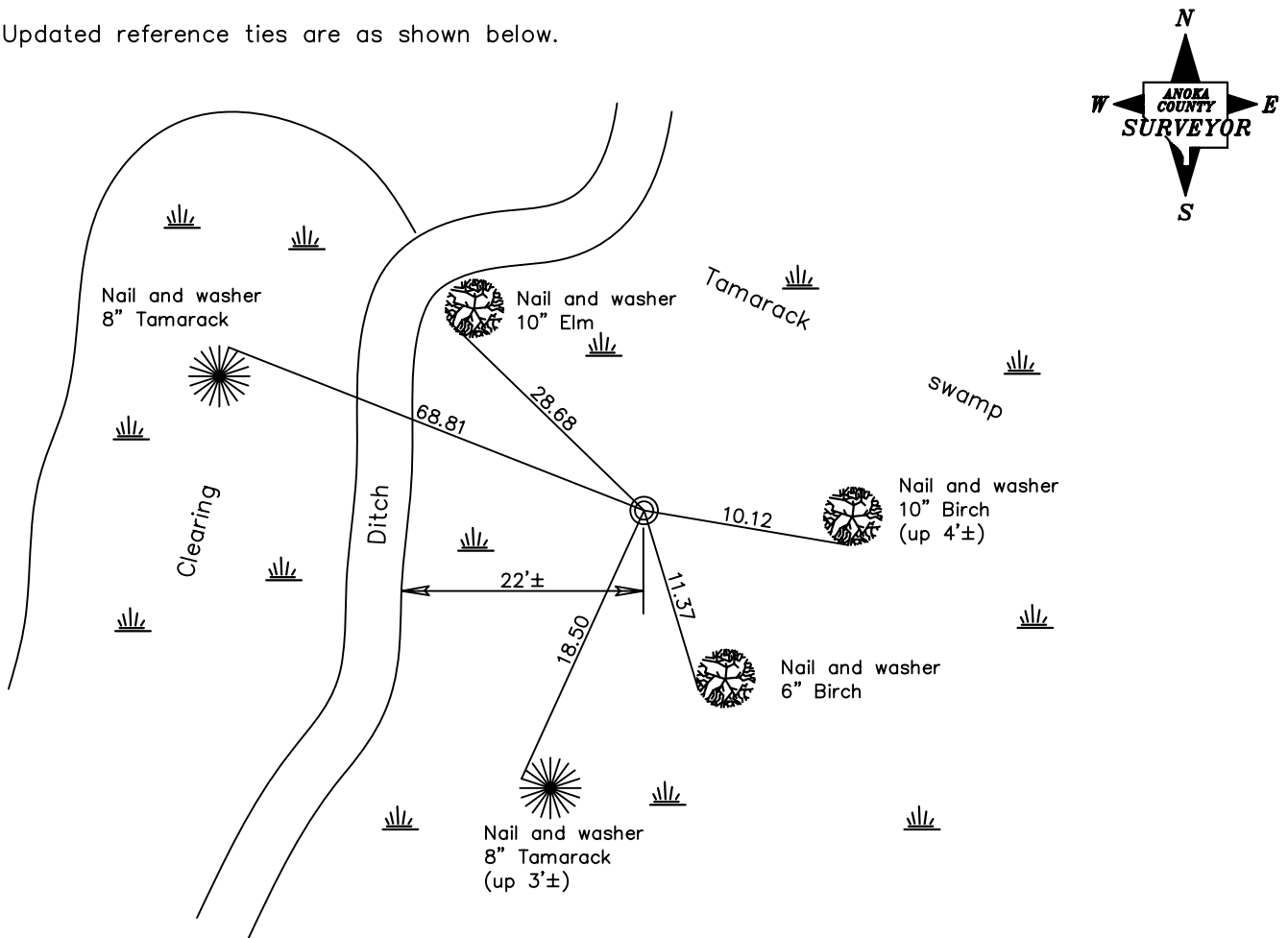
## South 1/4 Corner of Sec. 13 Township 33 Range 24

On the 31st day of August, 1970, the described corner was evidenced by area resurvey

and to perpetuate the location of said corner, at the exact location thereof, a permanent marker was placed consisting of a red and white iron pipe up 2'±

AND on the \_\_\_ day of \_\_\_\_\_, \_\_\_\_\_, said permanent marker was \_\_\_\_\_

Updated reference ties are as shown below.



**Revised date**

3/21/88
6/30/97
2/20/02

**N.A.D. 1983 Coordinates  
(1996 Adjustment)**

<b>County Project Coordinates</b>	
Northing	211659.4008
Easting	497603.3359
Date	2/20/02

I hereby certify that this United States public land survey monument record is correct and complete to the best of my knowledge and belief.

\_\_\_\_\_ Date \_\_\_\_\_  
 \_\_\_\_\_, Anoka County Surveyor  
 Minnesota License Number \_\_\_\_\_