

CERTIFICATE OF LOCATION OF GOVERNMENT CORNER

County of Anoka

State of Minnesota

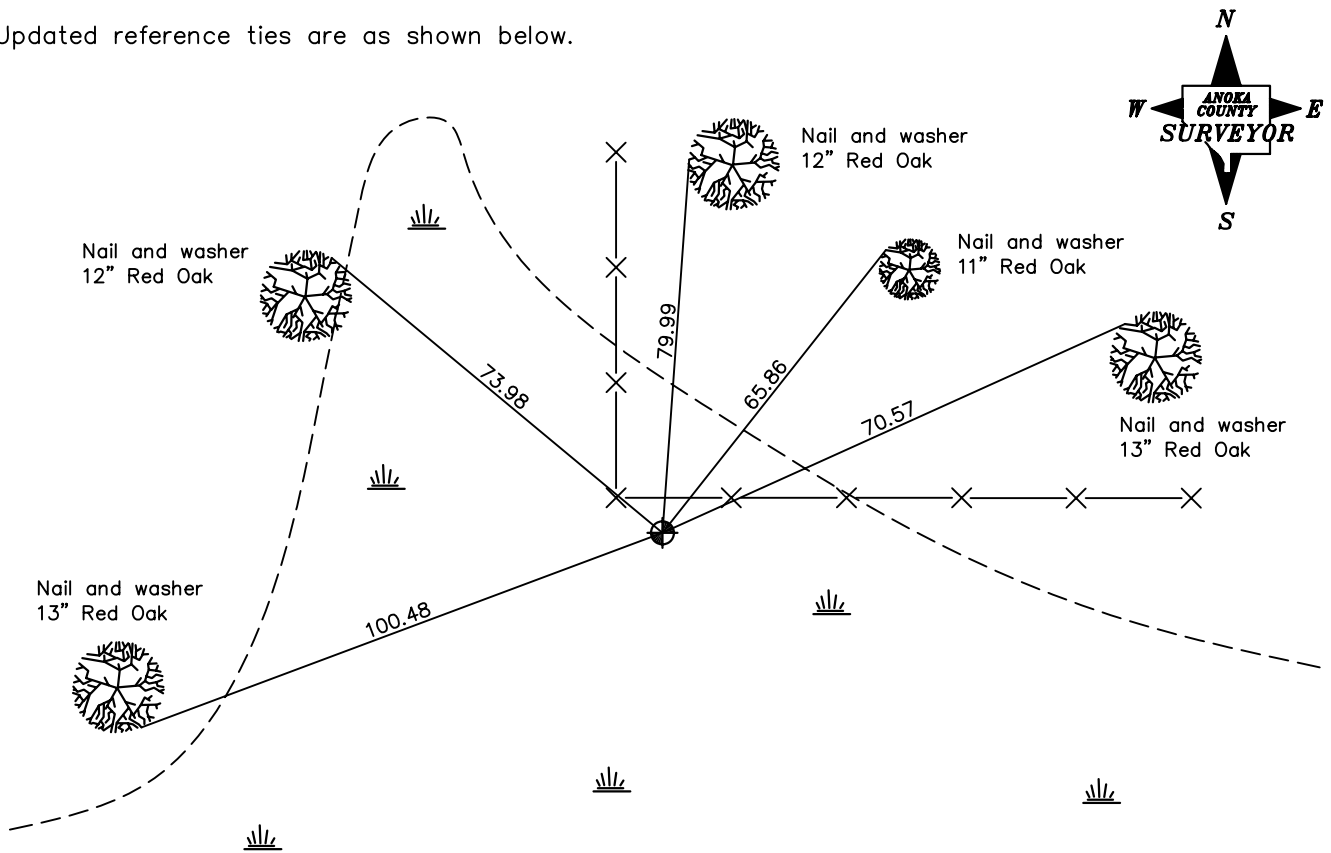
North $\frac{1}{4}$ Corner of Sec. 23 Township 33 Range 24

On the 20th day of October, 1960, the described corner was evidenced by a buggy leaf spring

and to perpetuate the location of said corner, at the exact location thereof, a permanent marker was placed consisting of a cast iron monument

AND on the ___ day of _____, _____, said permanent marker was _____

Updated reference ties are as shown below.



Revised date

3/18/02

N.A.D. 1983 Coordinates
(1996 Adjustment)

County Project Coordinates	
Northing	211616.9233
Easting	492316.0105
Date	3/18/02

I hereby certify that this United States public land survey monument record is correct and complete to the best of my knowledge and belief.

_____ Date _____
 _____, Anoka County Surveyor
 Minnesota License Number _____