

# CERTIFICATE OF LOCATION OF GOVERNMENT CORNER

County of Anoka

State of Minnesota

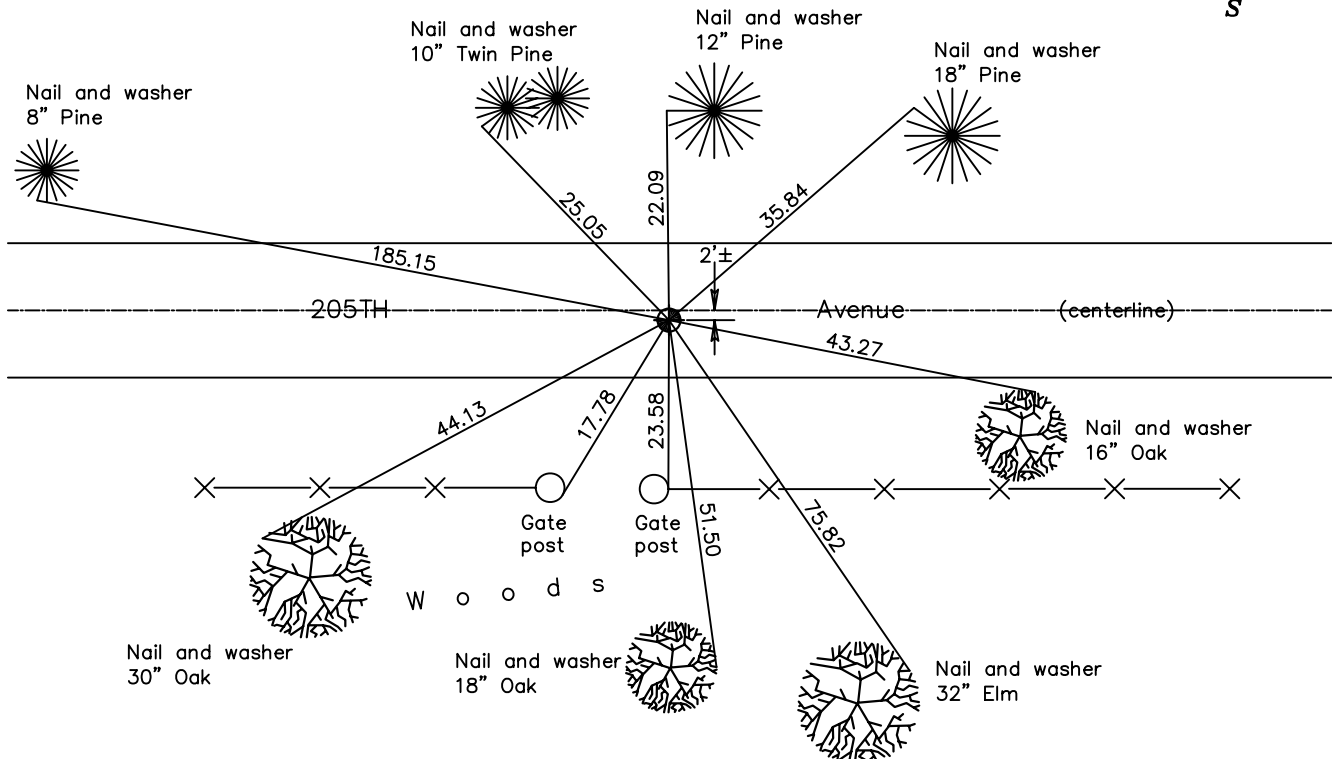
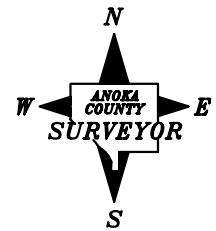
## Northeast Corner of Sec. 22 Township 33 Range 24

On the 29th day of June, 1960, the described corner was evidenced by a granite

and to perpetuate the location of said corner, at the exact location thereof, a permanent marker was placed consisting of a cast iron monument

AND on the \_\_\_ day of \_\_\_\_\_, \_\_\_\_\_, said permanent marker was \_\_\_\_\_

Updated reference ties are as shown below.



**Revised date**

6/03/97
9/01/00
3/26/01

N.A.D. 1983 Coordinates  
(1996 Adjustment)

County Project Coordinates
Northing <u>211605.9470</u>
Easting <u>489675.8152</u>
Date <u>3/26/01</u>

I hereby certify that this United States public land survey monument record is correct and complete to the best of my knowledge and belief.

\_\_\_\_\_ Date \_\_\_\_\_  
 \_\_\_\_\_, Anoka County Surveyor  
 Minnesota License Number \_\_\_\_\_