

# CERTIFICATE OF LOCATION OF GOVERNMENT CORNER

County of Anoka

State of Minnesota

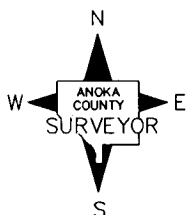
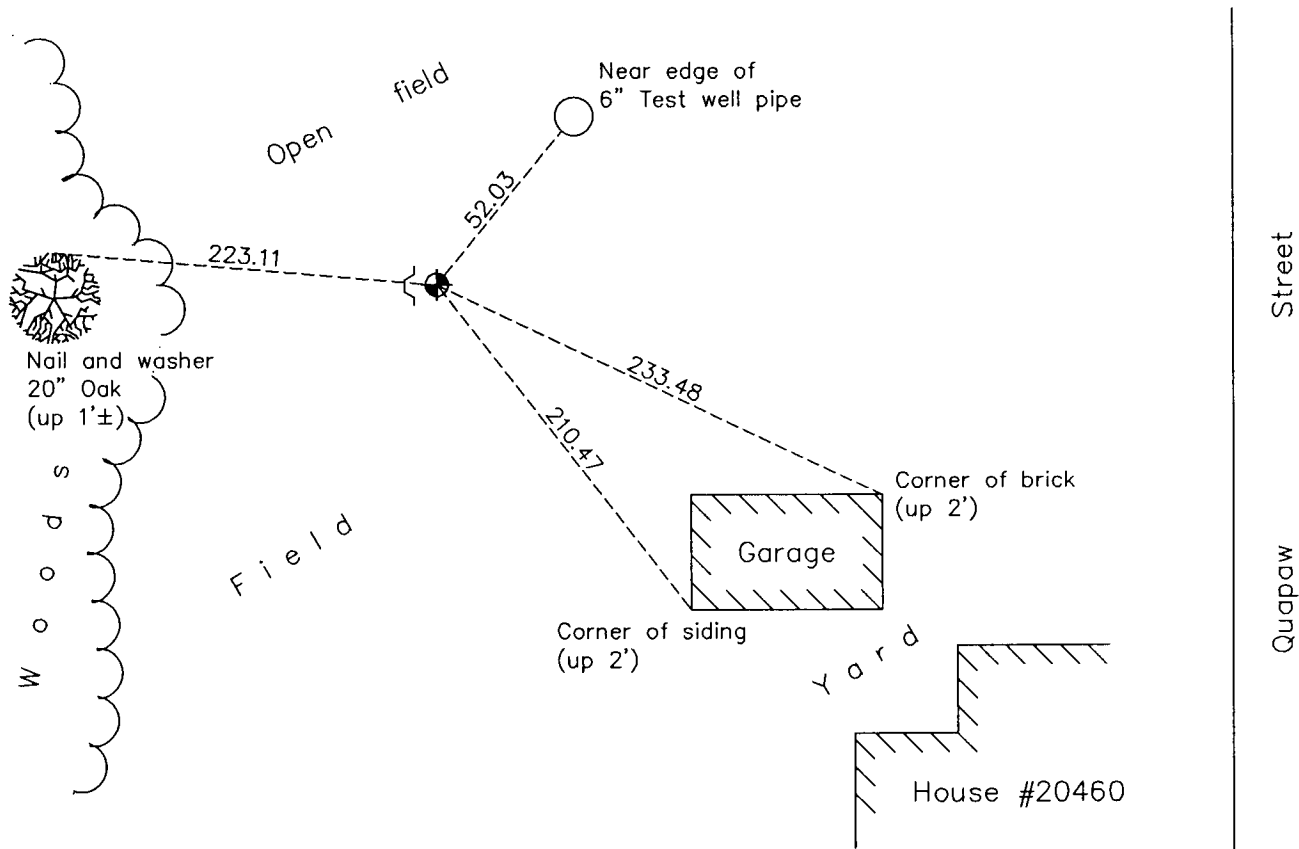
## Northwest Corner of Sec. 19 Township 33 Range 24

On the 6th day of April, 1964, the described corner was evidenced by a 4" square concrete monument

and to perpetuate the location of said corner, at the exact location thereof, a permanent marker was placed consisting of a cast iron monument with a sign and post on the south side

AND on the 25th day of January, 2012, said permanent marker was found down 0.5'± and the ties were updated. On April 5, 2012 a new sign and post was set on the west side.

Updated reference ties are as shown below.



Revision Date  
6/13/12

N.A.D. 1983 Coordinates  
(1996 Adjustment)

County Project Coordinates	
Northing	211914.8930
Easting	468647.5992
Date	6/28/01

I hereby certify that this United States public land survey monument record is correct and complete to the best of my knowledge and belief.

*Larry D. Hoium* Date 6/13/12

Larry D. Hoium, Anoka County Surveyor  
Minnesota License Number 18165