

CERTIFICATE OF LOCATION OF GOVERNMENT CORNER

County of Anoka

State of Minnesota

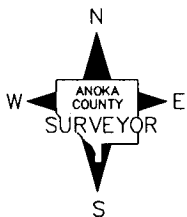
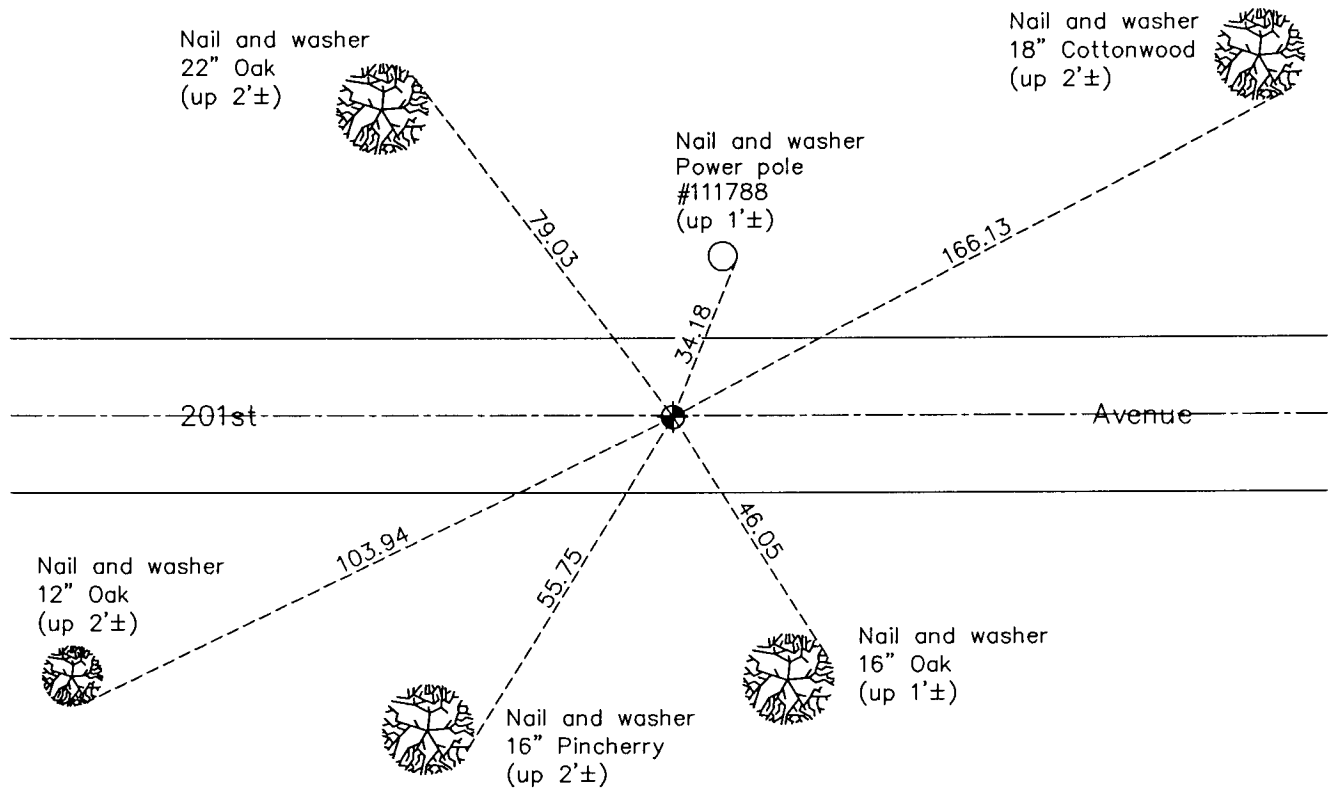
West 1/4 Corner of Sec. 22 Township 33 Range 24

On the 29th day of June, 1960, the described corner was evidenced by a concrete monument

and to perpetuate the location of said corner, at the exact location thereof, a permanent marker was placed consisting of a cast iron monument

AND on the 2nd day of February, 2012, said permanent marker was found and the ties were updated

Updated reference ties are as shown below.



Revision Date 6/15/12

N.A.D. 1983 Coordinates
(1996 Adjustment)

| County Project Coordinates | |
|----------------------------|--------------------|
| Northing | <u>209024.2553</u> |
| Easting | <u>484513.8228</u> |
| Date | <u>4/18/01</u> |

I hereby certify that this United States public land survey monument record is correct and complete to the best of my knowledge and belief.

Larry D. Hoium Date 6/15/12

Larry D. Hoium, Anoka County Surveyor

Minnesota License Number 18165