

# CERTIFICATE OF LOCATION OF GOVERNMENT CORNER

County of Anoka

State of Minnesota

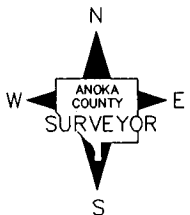
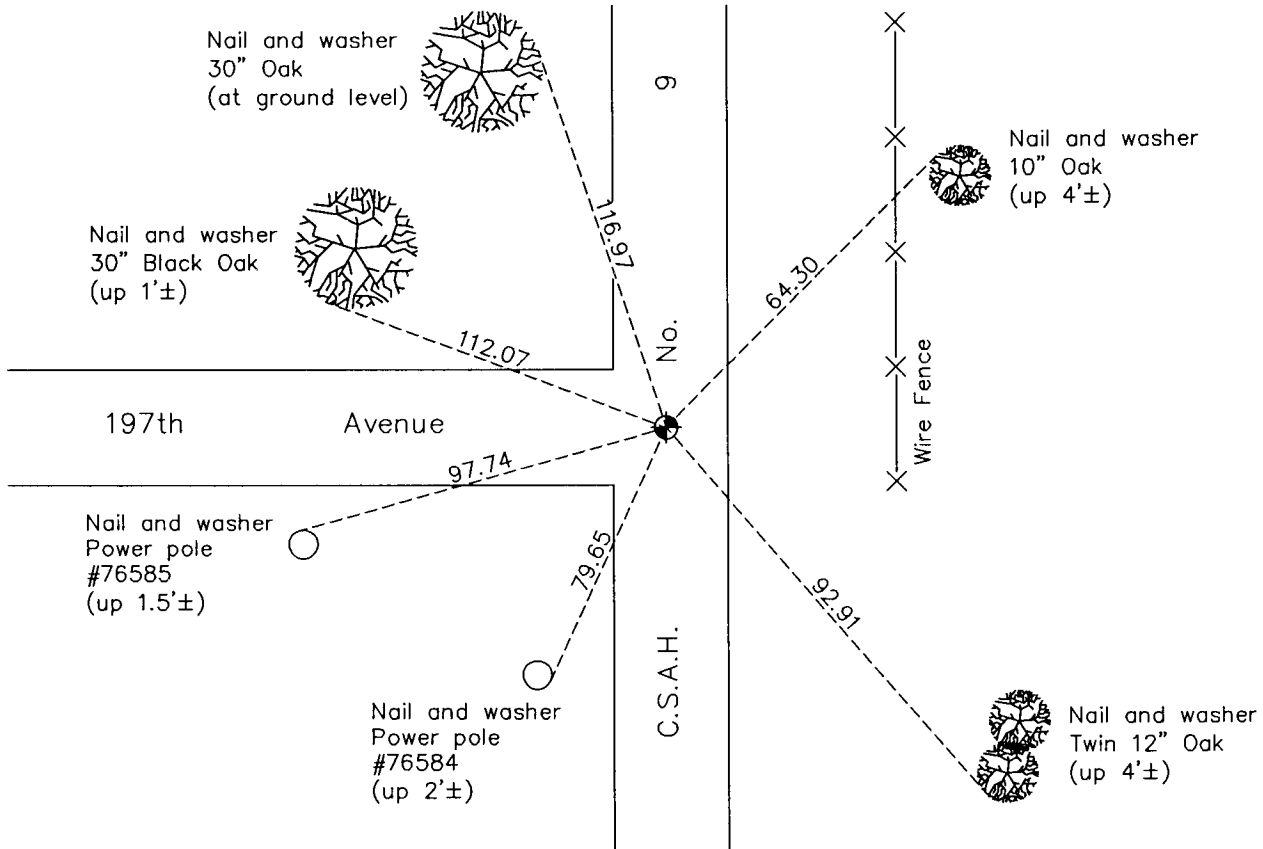
## Northeast Corner of Sec. 29 Township 33 Range 24

On the 13th day of July, 1960, the described corner was evidenced by an iron pipe

and to perpetuate the location of said corner, at the exact location thereof, a permanent marker was placed consisting of a cast iron monument

AND on the 29th day of March, 2012, said permanent marker was found and the ties  
were updated

Updated reference ties are as shown below.



Revision Date  
9/19/12

N.A.D. 1983 Coordinates  
(1996 Adjustment)

County Project Coordinates	
Northing	<u>206450.1897</u>
Easting	<u>479225.8960</u>
Date	<u>2/15/01</u>

I hereby certify that this United States public land survey monument record is correct and complete to the best of my knowledge and belief.

*Larry D. Hoium* Date 9/19/12

Larry D. Hoium, Anoka County Surveyor

Minnesota License Number 18165