

CERTIFICATE OF LOCATION OF GOVERNMENT CORNER

County of Anoka

State of Minnesota

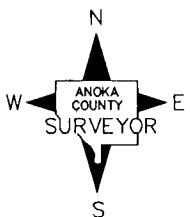
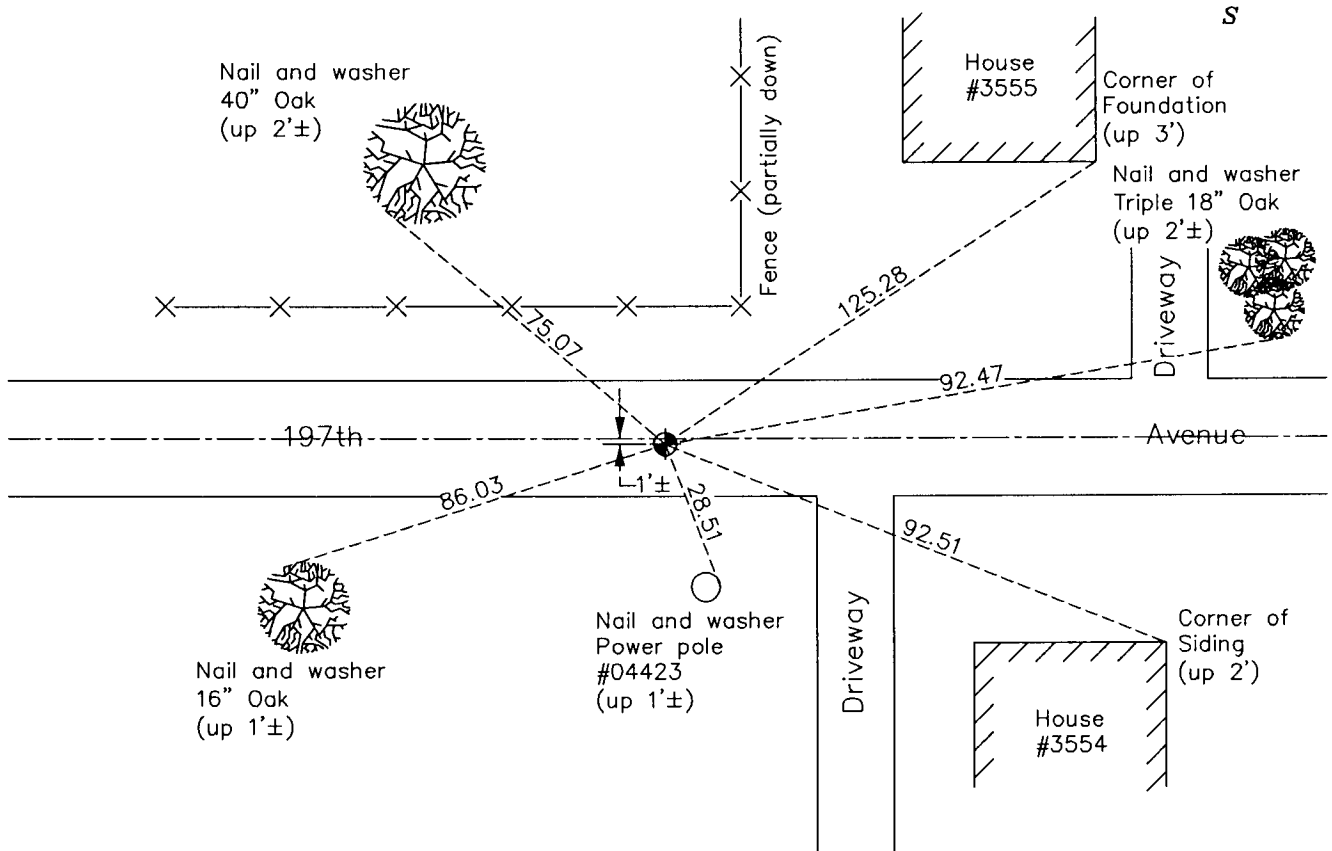
North 1/4 Corner of Sec. 29 Township 33 Range 24

On the 23rd day of July, 1965, the described corner was evidenced by a 1-1/2" well point

and to perpetuate the location of said corner, at the exact location thereof, a permanent marker was placed consisting of a cast iron monument

AND on the 24th day of February, 2012, said permanent marker was found and the ties were updated

Updated reference ties are as shown below.



N.A.D. 1983 Coordinates
(1996 Adjustment)

County Project Coordinates

Northing 206496.7214

Easting 476598.8371

Date 2/15/01

Revision Date

9/20/12

I hereby certify that this United States public land survey monument record is correct and complete to the best of my knowledge and belief.

Larry D. Hoium Date 9/20/12

Larry D. Hoium, Anoka County Surveyor

Minnesota License Number 18165