

# CERTIFICATE OF LOCATION OF GOVERNMENT CORNER

County of Anoka

State of Minnesota

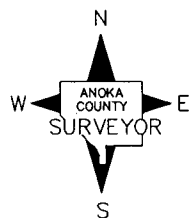
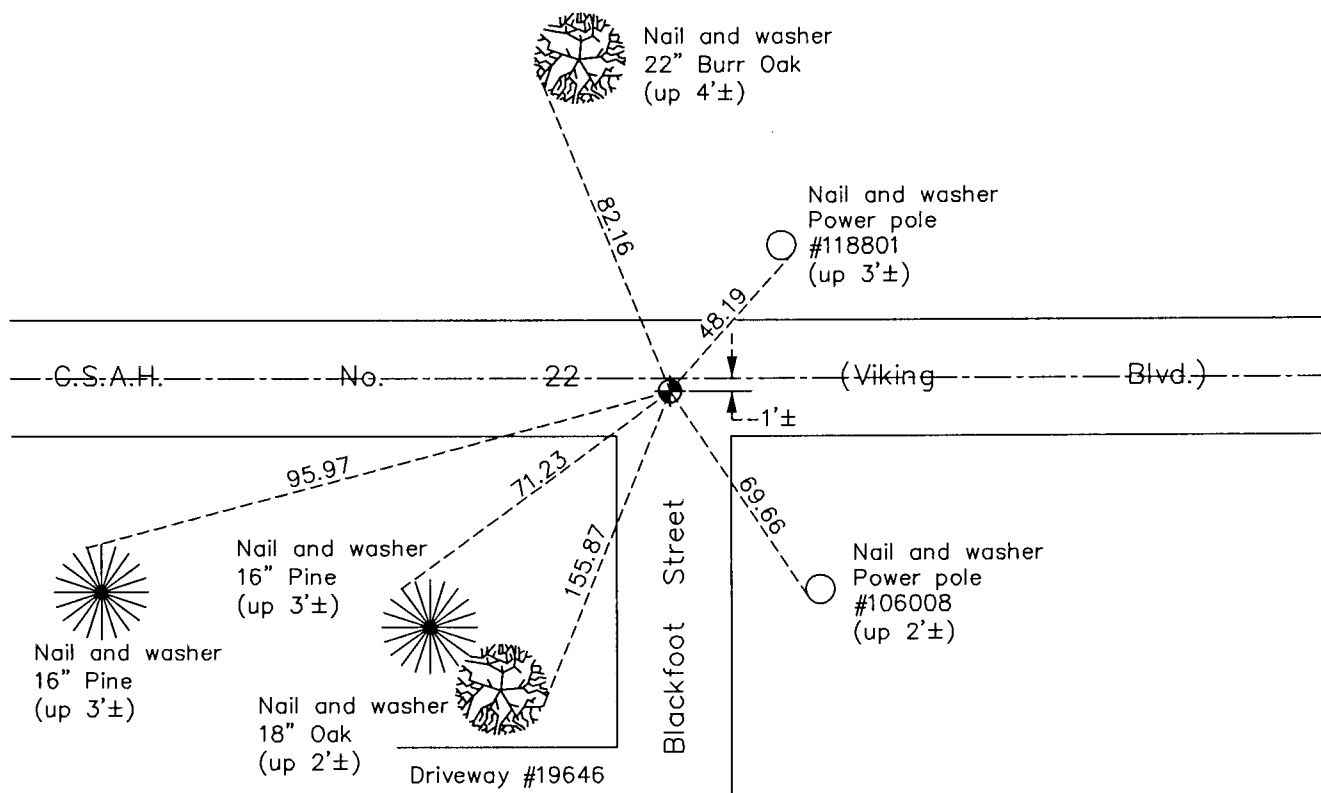
## Northwest Corner of Sec. 29 Township 33 Range 24

On the 13th day of July, 1960, the described corner was evidenced by a concrete monument

and to perpetuate the location of said corner, at the exact location thereof, a permanent marker was placed consisting of a cast iron monument

AND on the 24th day of February, 2012, said permanent marker was found flush with the surface and the ties were updated

Updated reference ties are as shown below.



N.A.D. 1983 Coordinates  
(1996 Adjustment)

County Project Coordinates	
Northing	<u>206546.3132</u>
Easting	<u>473966.2814</u>
Date	<u>2/15/01</u>

Revision Date

9/20/12

I hereby certify that this United States public land survey monument record is correct and complete to the best of my knowledge and belief.

*Larry D. Hoium* Date 9/20/12

Larry D. Hoium, Anoka County Surveyor

Minnesota License Number 18165