

CERTIFICATE OF LOCATION OF GOVERNMENT CORNER

County of Anoka

State of Minnesota

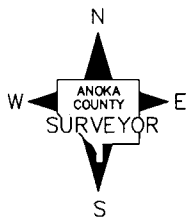
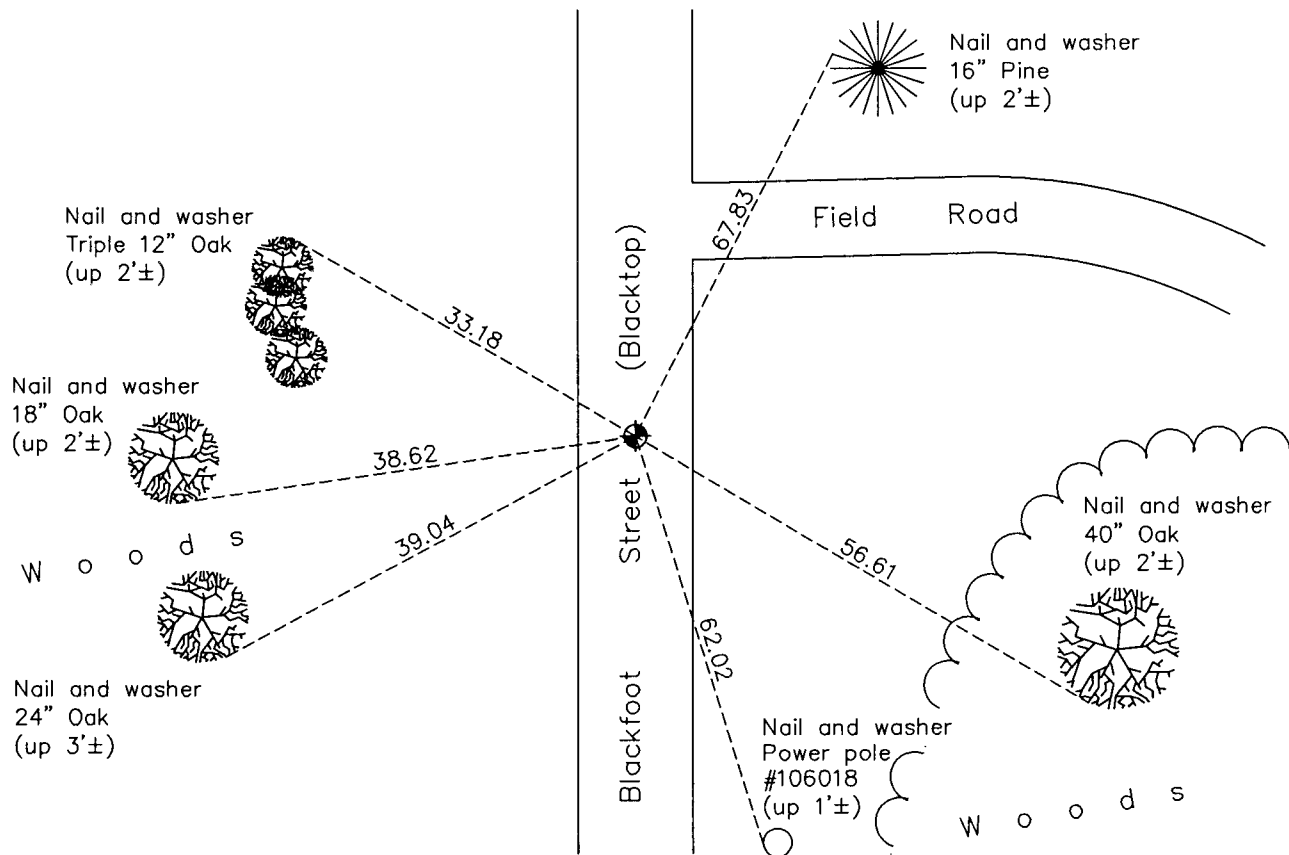
West 1/4 Corner of Sec. 29 Township 33 Range 24

On the 10th day of November, 1965, the described corner was evidenced by an axle shaft from N. C. Hoium ties

and to perpetuate the location of said corner, at the exact location thereof, a permanent marker was placed consisting of a cast iron monument

AND on the 4th day of April, 2012, said permanent marker was found down 1.5'±. On May 1, 2012 replaced solid C.I.M. with an extendible C.I.M. flush with the surface and updated ties.

Updated reference ties are as shown below.



N.A.D. 1983 Coordinates
(1996 Adjustment)

County Project Coordinates	
Northing	203907.1574
Easting	473983.6968
Date	6/26/01

Revision Date
9/24/12

I hereby certify that this United States public land survey monument record is correct and complete to the best of my knowledge and belief.

Larry D. Hoium Date 9/24/12
 Larry D. Hoium, Anoka County Surveyor
 Minnesota License Number 18165