

CERTIFICATE OF LOCATION OF GOVERNMENT CORNER

County of Anoka

State of Minnesota

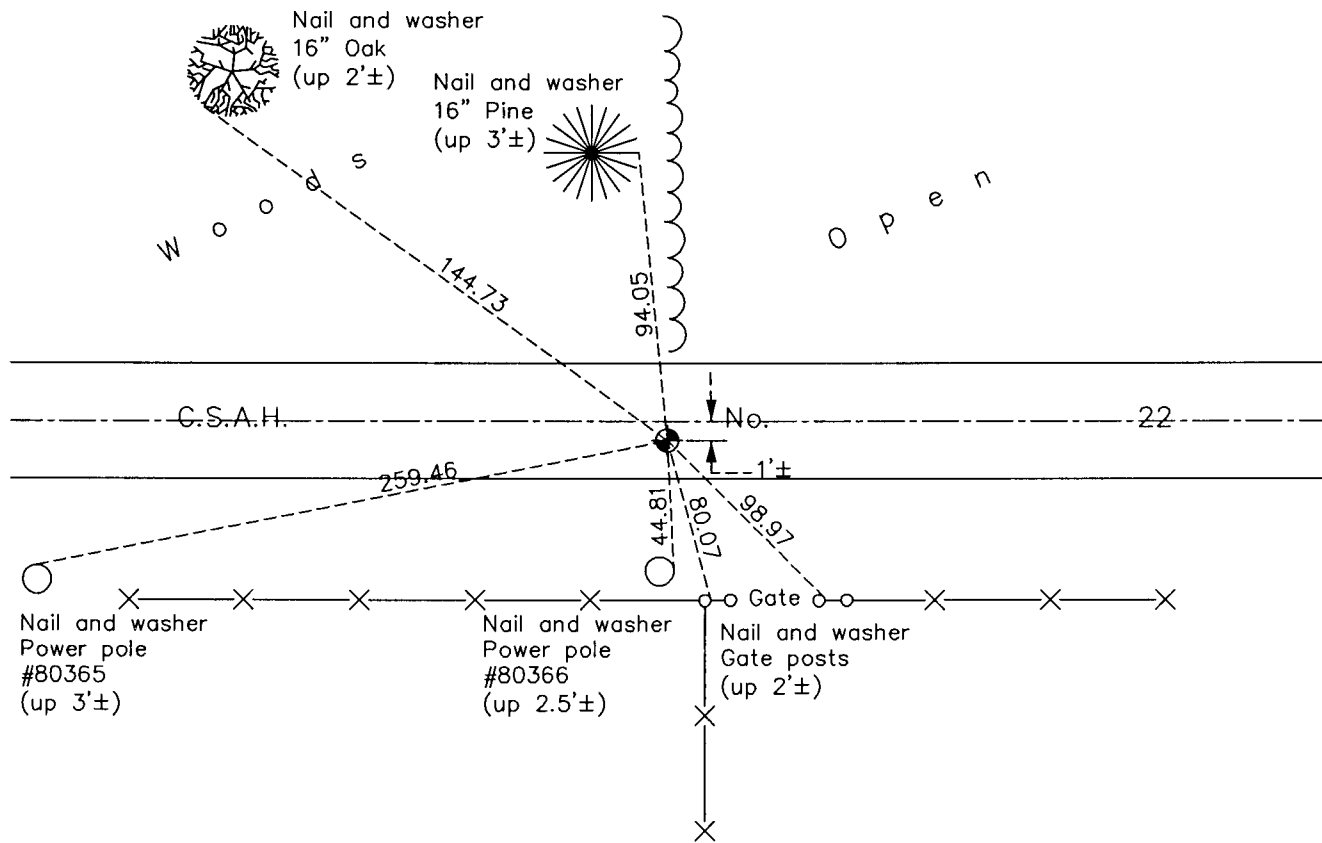
West 1/4 Corner of Sec. 27 Township 33 Range 24

On the 14th day of September, 1967, the described corner was evidenced by area resurvey

and to perpetuate the location of said corner, at the exact location thereof, a permanent marker was placed consisting of a cast iron monument

AND on the 2nd day of March, 2012, said permanent marker was found and the ties were updated

Updated reference ties are as shown below.



Revision Date

9/21/12

N.A.D. 1983 Coordinates
(1996 Adjustment)

County Project Coordinates	
Northing	203701.5934
Easting	484499.7497
Date	2/27/01

I hereby certify that this United States public land survey monument record is correct and complete to the best of my knowledge and belief.

Date 9/21/12

Larry D. Hoium, Anoka County Surveyor
 Minnesota License Number 18165