

CERTIFICATE OF LOCATION OF GOVERNMENT CORNER

County of Anoka

State of Minnesota

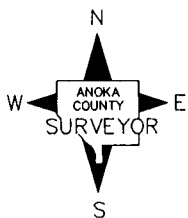
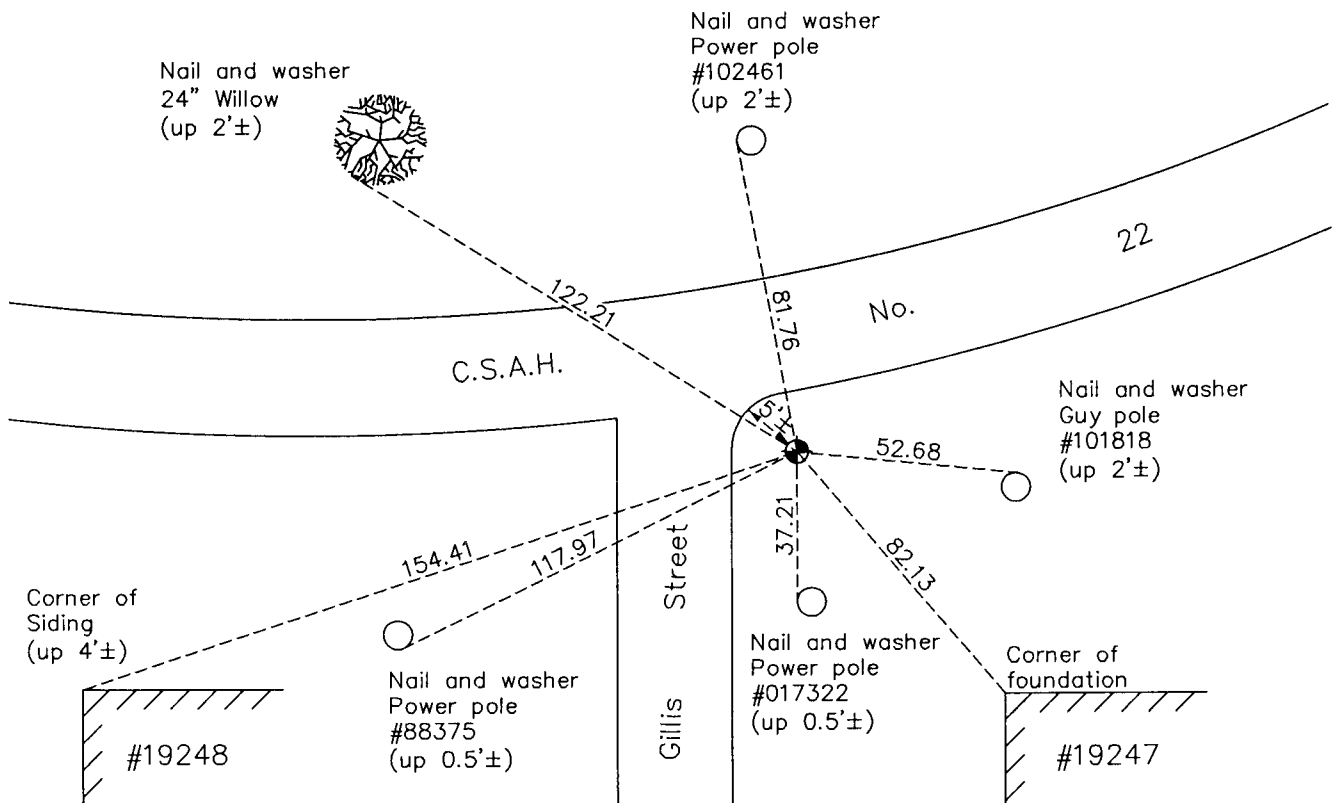
East 1/4 Corner of Sec. 26 Township 33 Range 24

On the 28th day of May, 1968, the described corner was evidenced by a concrete monument

and to perpetuate the location of said corner, at the exact location thereof, a permanent marker was placed consisting of a cast iron monument

AND on the 10th day of October, 2011, said permanent marker was found down 0.5'± and the ties were updated

Updated reference ties are as shown below.



N.A.D. 1983 Coordinates
(1996 Adjustment)

County Project Coordinates	
Northing	<u>203758.1997</u>
Easting	<u>495022.3138</u>
Date	<u>6/11/01</u>

Revision Date
12/15/11

I hereby certify that this United States public land survey monument record is correct and complete to the best of my knowledge and belief.

Larry D. Hoium Date 12/15/11

Larry D. Hoium, Anoka County Surveyor

Minnesota License Number 18165