

CERTIFICATE OF LOCATION OF GOVERNMENT CORNER

County of Anoka

State of Minnesota

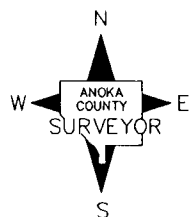
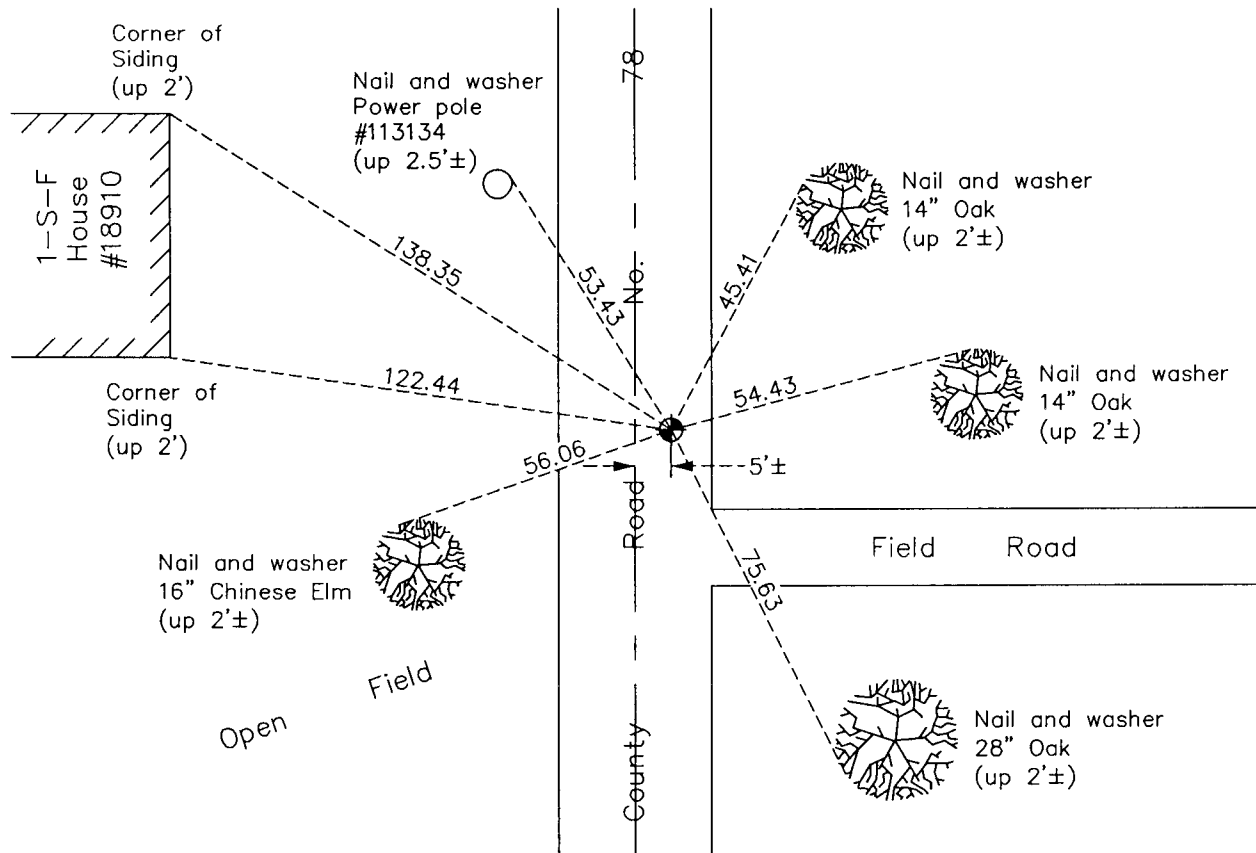
Southeast Corner of Sec. 27 Township 33 Range 24

On the 8th day of September, 1967, the described corner was evidenced by area resurvey

and to perpetuate the location of said corner, at the exact location thereof, a permanent marker was placed consisting of a cast iron monument

AND on the 2nd day of March, 2012, said permanent marker was found and the ties
were updated

Updated reference ties are as shown below.



Revision Date

11/19/12

N.A.D. 1983 Coordinates
(1996 Adjustment)

County Project Coordinates	
Northing	201094.9711
Easting	489827.1524
Date	2/27/01

I hereby certify that this United States public land survey monument record is correct and complete to the best of my knowledge and belief.

Larry D. Hoium Date 11/19/12

Larry D. Hoium, Anoka County Surveyor

Minnesota License Number 18165