

CERTIFICATE OF LOCATION OF GOVERNMENT CORNER

County of Anoka

State of Minnesota

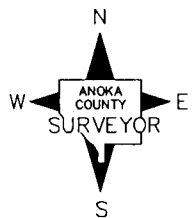
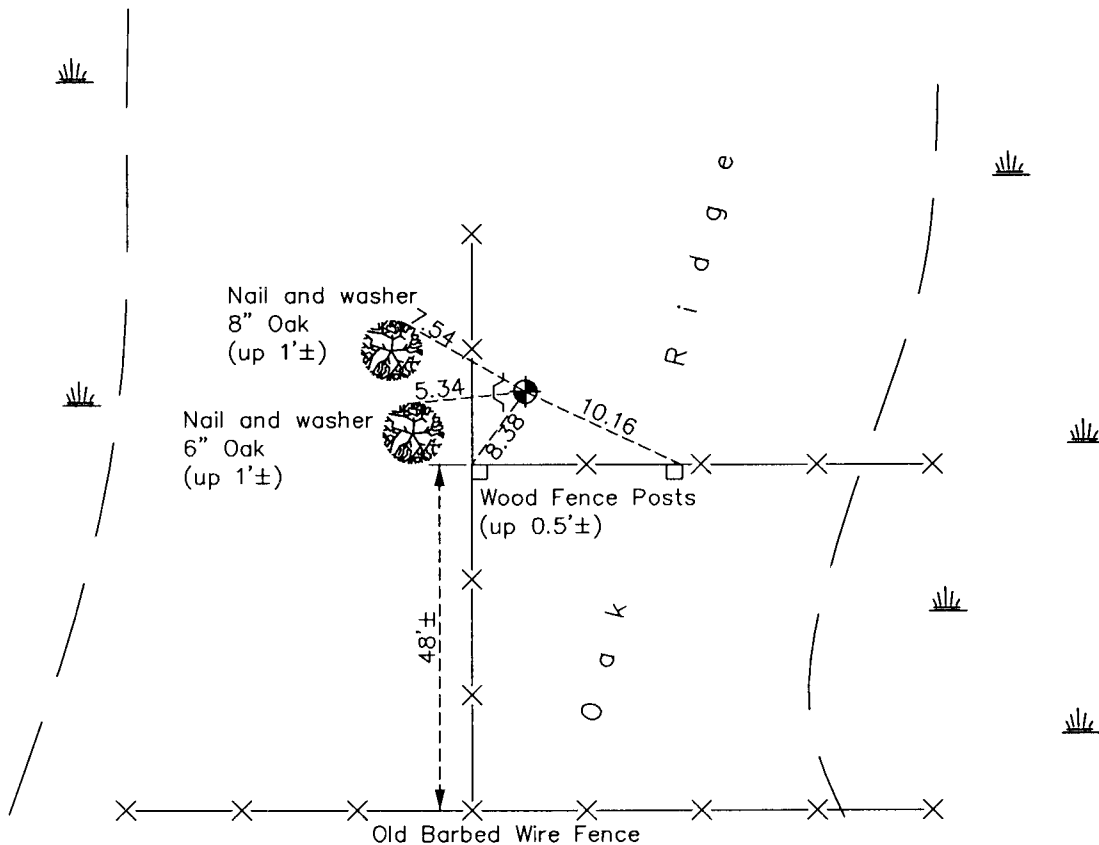
South 1/4 Corner of Sec. 29 Township 33 Range 24

On the 10th day of November, 1965, the described corner was evidenced by a 1" iron pipe from N.C. Hoium ties

and to perpetuate the location of said corner, at the exact location thereof, a permanent marker was placed consisting of a cast iron monument with a sign and post on the west side

AND on the 24th day of February, 2012, said permanent marker was found and the ties were updated. A new sign was added on March 30, 2012.

Updated reference ties are as shown below.



Revision Date
12/04/12

N.A.D. 1983 Coordinates
(1996 Adjustment)

County Project Coordinates	
Northing	201227.2077
Easting	476619.0236
Date	3/12/02

I hereby certify that this United States public land survey monument record is correct and complete to the best of my knowledge and belief.

Larry D. Hoium Date 12/04/12
 Larry D. Hoium, Anoka County Surveyor
 Minnesota License Number 18165