

# CERTIFICATE OF LOCATION OF GOVERNMENT CORNER

County of Anoka

State of Minnesota

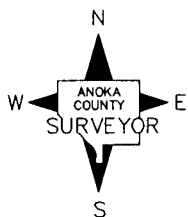
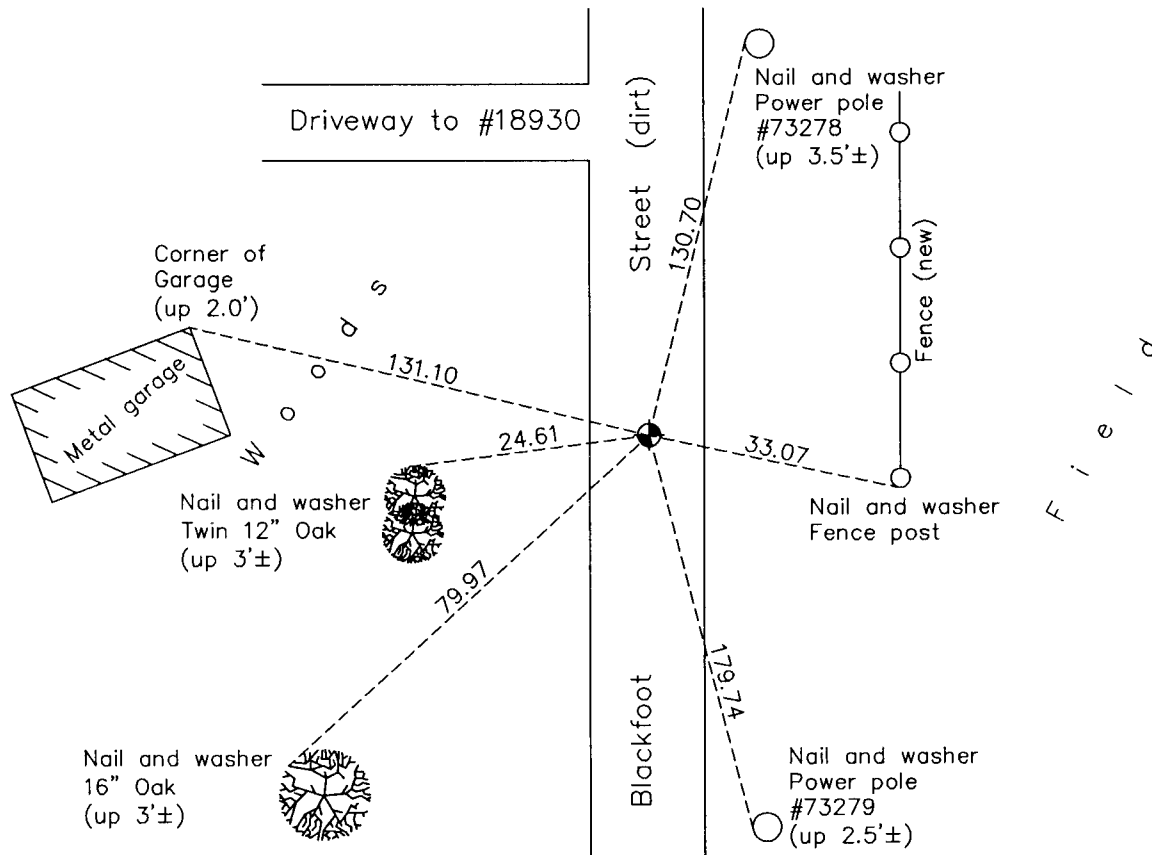
## Southwest Corner of Sec. 29 Township 33 Range 24

On the 10th day of November, 1965, the described corner was evidenced by a 1 1/2" iron pipe

and to perpetuate the location of said corner, at the exact location thereof, a permanent marker was placed consisting of a cast iron monument

AND on the 30th day of March, 2012, said permanent marker was found down 0.5'± and the ties were updated

Updated reference ties are as shown below.



Revision Date

12/06/12

N.A.D. 1983 Coordinates  
(1996 Adjustment)

County Project Coordinates	
Northing	<u>201275.5777</u>
Easting	<u>474005.7732</u>
Date	<u>6/26/01</u>

I hereby certify that this United States public land survey monument record is correct and complete to the best of my knowledge and belief.

*Larry D. Hoium* Date 12/06/12

Larry D. Hoium, Anoka County Surveyor

Minnesota License Number 18165