

CERTIFICATE OF LOCATION OF GOVERNMENT CORNER

County of Anoka

State of Minnesota

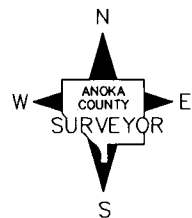
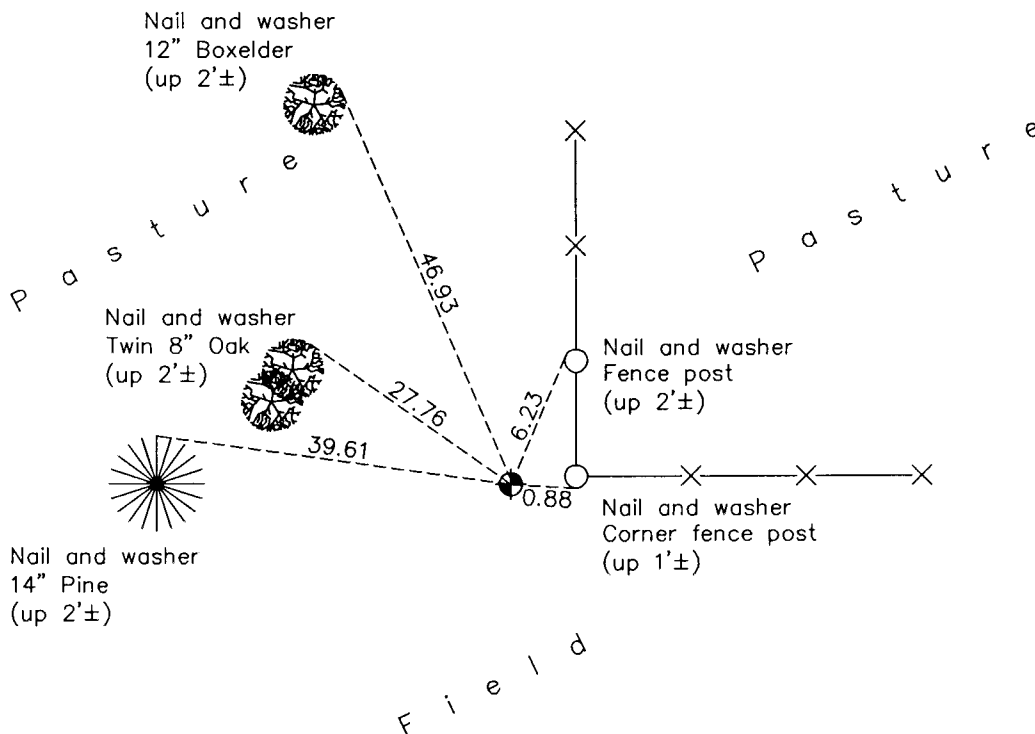
Southwest Corner of Sec. 30 Township 33 Range 24

On the 9th day of October, 1963, the described corner was evidenced by a 4" X 6" field stone

and to perpetuate the location of said corner, at the exact location thereof, a permanent marker was placed consisting of a cast iron monument

AND on the 24th day of January, 2012, said permanent marker was found and the ties were updated

Updated reference ties are as shown below.



N.A.D. 1983 Coordinates
(1996 Adjustment)

County Project Coordinates	
Northing	<u>201404.4186</u>
Easting	<u>468662.6110</u>
Date	<u>3/11/02</u>

Revision Date

12/06/12

I hereby certify that this United States public land survey monument record is correct and complete to the best of my knowledge and belief.

Larry D. Hoium Date 12/06/12

Larry D. Hoium, Anoka County Surveyor

Minnesota License Number 18165