

# CERTIFICATE OF LOCATION OF GOVERNMENT CORNER

County of Anoka

State of Minnesota

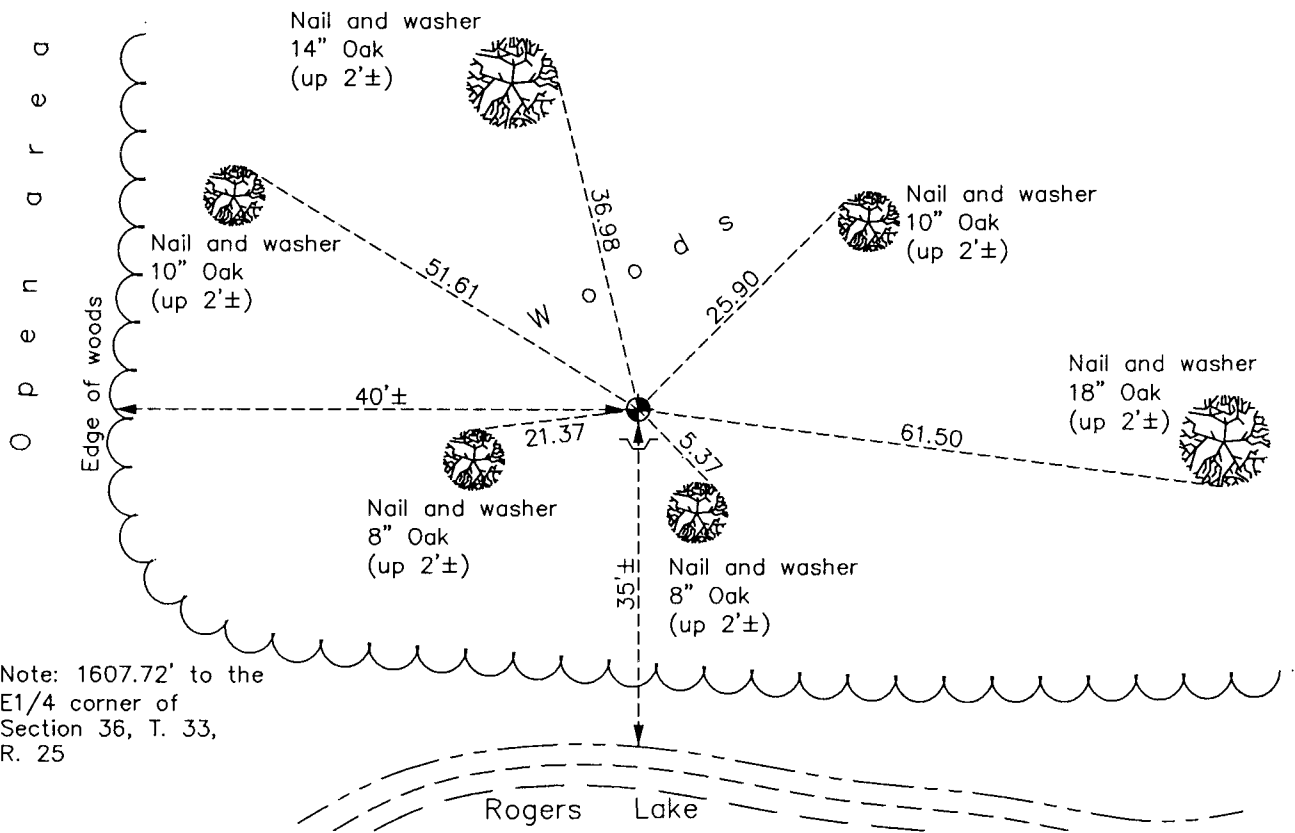
Witness Corner of Sec. 31 Township 33 Range 24  
 (on west line of SW1/4)

On the 22nd day of December, 1965, the described corner was evidenced by area resurvey

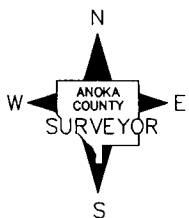
and to perpetuate the location of said corner, at the exact location thereof, a permanent marker was placed consisting of a cast iron monument with a sign and post on the south side

AND on the 23rd day of January, 2012, said permanent marker was found and the ties were updated

Updated reference ties are as shown below.



Note: 1607.72' to the E1/4 corner of Section 36, T. 33, R. 25



Revision Date

12/12/12

N.A.D. 1983 Coordinates  
(1996 Adjustment)

County Project Coordinates	
Northing	197162.0081
Easting	468649.8049
Date	2/25/02

I hereby certify that this United States public land survey monument record is correct and complete to the best of my knowledge and belief.

*Larry D. Hoium* Date 12/12/12

Larry D. Hoium, Anoka County Surveyor

Minnesota License Number 18165