

CERTIFICATE OF LOCATION OF GOVERNMENT CORNER

County of Anoka

State of Minnesota

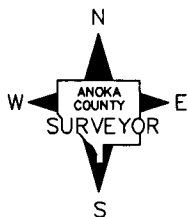
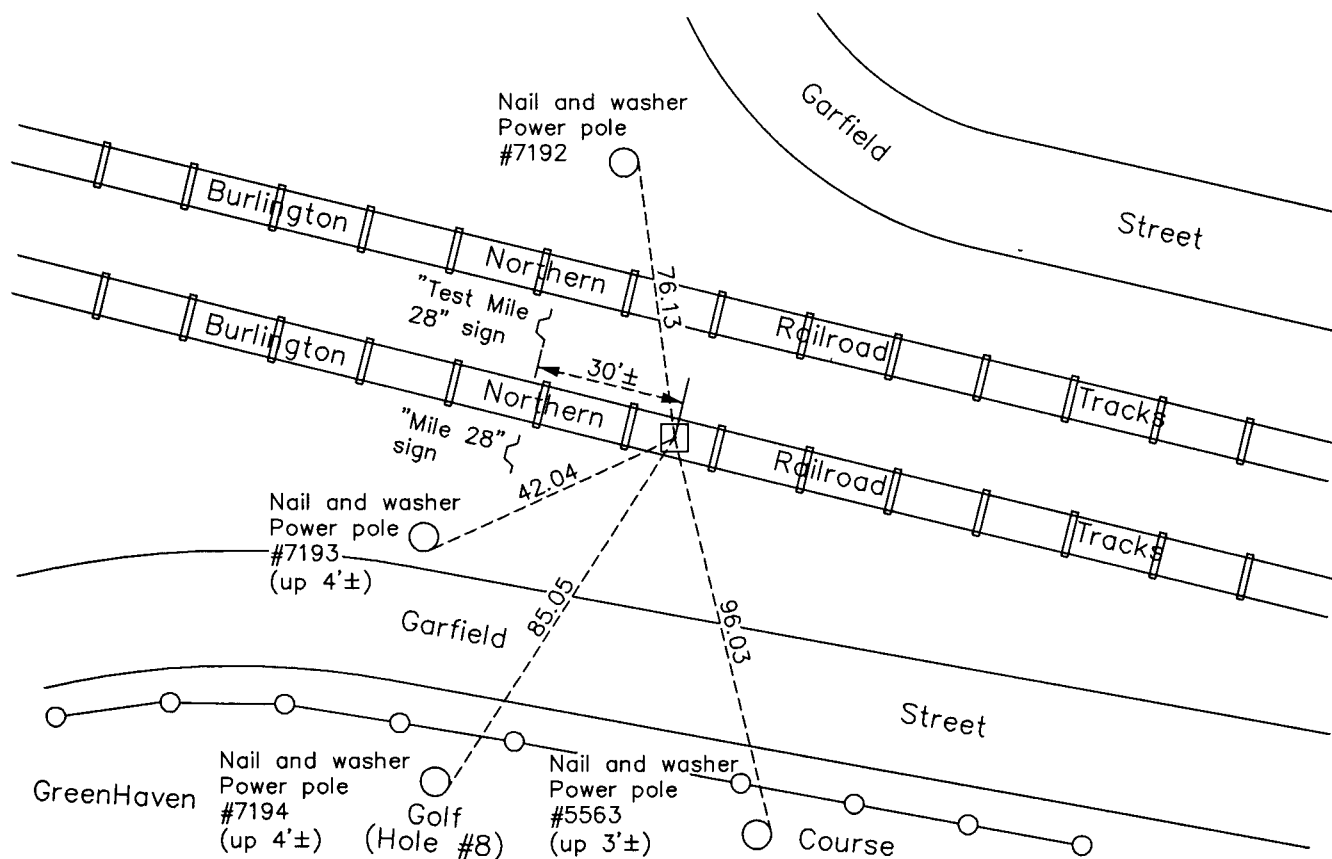
North $\frac{1}{4}$ Corner of Sec. 1 Township 31 Range 25

On the 7th day of November, 1945, the described corner was evidenced by a concrete monument set by Herrick

and to perpetuate the location of said corner, at the exact location thereof, a permanent marker was placed consisting of the same concrete monument down 2'± under a 4" PVC pipe

AND on the 1st day of October, 2010, said permanent marker was found and the ties were updated

Updated reference ties are as shown below.



N.A.D. 1983 Coordinates
(1996 Adjustment)

| County Project Coordinates | |
|----------------------------|-------------|
| Northing | 164609.4023 |
| Easting | 465903.6263 |
| Date | 4/07/00 |

Revision Date
12/17/10

I hereby certify that this United States public land survey monument record is correct and complete to the best of my knowledge and belief.

Larry D. Hoium Date 12/17/10
 _____, Anoka County Surveyor
 Minnesota License Number 18165

HISTORY OF GOVERNMENT CORNER

Page No. 2

County of Anoka

State of Minnesota

North 1/4 Corner of Sec. 1 Township 31 Range 25

CORNER HISTORY:

November 7, 1945 - H.A. Cartwright found concrete monument down 0.8'. Established ties to monument.

November 29, 1962 - Found 4" concrete monument 0.8' below base of rail and 1.0' from inside edge of base of north rail. Set bridge spike above concrete monument in plank of signal car set out.

July 28, 1966 - Found concrete monument and updated ties.

July 15, 1974 - Found concrete monument and updated ties.

June 27, 1977 - Could not find concrete monument.

May 2, 1979 - Found concrete monument down 1.5'± under railroad tie between south tracks. Set P.K. nail in tie above concrete monument and updated ties.

July 9, 1980 - Found concrete monument and updated ties.

June 10, 1986 - Found concrete monument and updated ties.

August 9, 1990 - Found concrete monument and updated ties.

April 5, 1995 - Found concrete monument and updated ties.

April 7, 2000 - Found concrete monument and established NAD 1983 (1996 Adjustment) Anoka County Project Coordinates by Static GPS methods. Updated ties.

October 1, 2010 - Found concrete monument down 2.0'± under a 4" PVC pipe and 30'± east of Mile Marker signs and updated ties.