

# CERTIFICATE OF LOCATION OF GOVERNMENT CORNER

County of Anoka

State of Minnesota

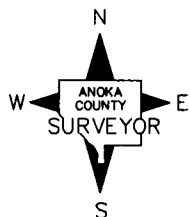
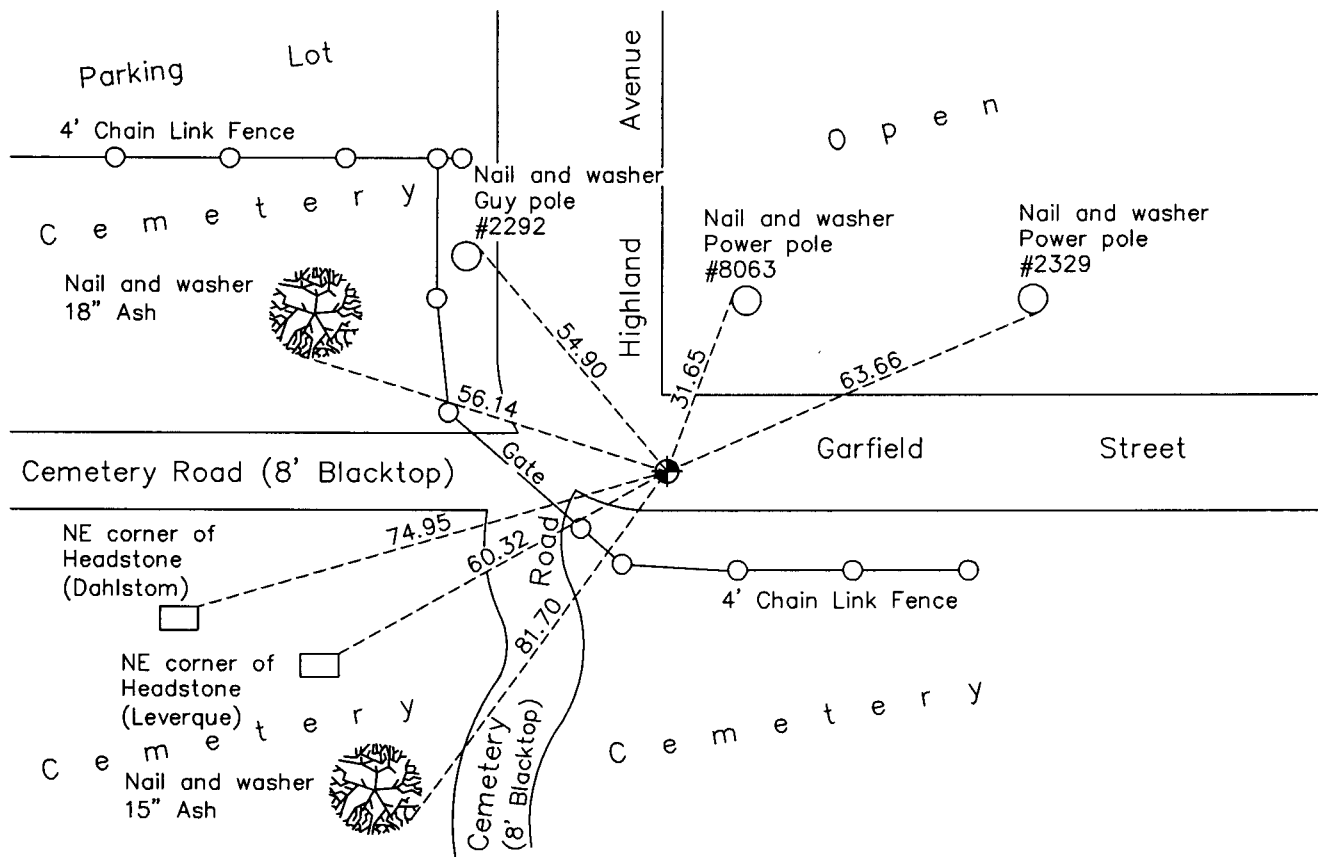
## Northwest Corner of Sec. 1 Township 31 Range 25

On the 11th day of August, 1966, the described corner was evidenced by a broken  
concrete monument

and to perpetuate the location of said corner, at the exact location thereof, a permanent marker  
was placed consisting of a cast iron monument

AND on the 30th day of September, 2010, said permanent marker was found and the ties  
were updated

Updated reference ties are as shown below.



Revision Date  
12/20/10

N.A.D. 1983 Coordinates  
(1996 Adjustment)

County Project Coordinates	
Northing	164617.7635
Easting	463246.9249
Date	4/07/00

I hereby certify that this United States public land survey monument record is correct and complete to the best of my knowledge and belief.

*Larry D. Hoium* Date 12/20/10

Larry D. Hoium, Anoka County Surveyor

Minnesota License Number 18165

# HISTORY OF GOVERNMENT CORNER

Page No. 3

County of Anoka

State of Minnesota

## Northwest Corner of Sec. 1 Township 31 Range 25

### **CORNER HISTORY:**

July 13, 1943 - H.A. Cartwright found concrete monument Flush with the surface. Established ties to monument.

March 29, 1963 - Found concrete monument flush with the surface and updated ties.

March 18, 1966 - Found concrete monument missing. Set P.K. nail in corner position using remaining ties and set P.K. nails 2.00' North and East. Updated ties.

August 11, 1966 - Found concrete monument broken off and down 1.2'. Monument was 0.06' south and 0.01' east of P.K. nails set on March 18, 1966. Set cast iron monument over concrete monument flush with the surface and updated ties. Set P.K. nails 2.00' North and East.

August 7, 1970 - Found cast iron monument and updated ties.

July 15, 1974 - Found cast iron monument and updated ties.

June 27, 1977 - Found cast iron monument and updated ties.

July 9, 1980 - Found cast iron monument and updated ties.

June 16, 1986 - Found cast iron monument and updated ties.

August 9, 1990 - Found cast iron monument and updated ties.

August 19, 1994 - Found cast iron monument and updated ties.

April 7, 2000 - Found cast iron monument and established NAD 1983 (1996 Adjustment) Anoka County Project Coordinates by Static GPS methods. Updated ties.

September 30, 2010 - Found cast iron monument and updated ties.