

# CERTIFICATE OF LOCATION OF GOVERNMENT CORNER

County of Anoka

State of Minnesota

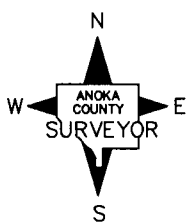
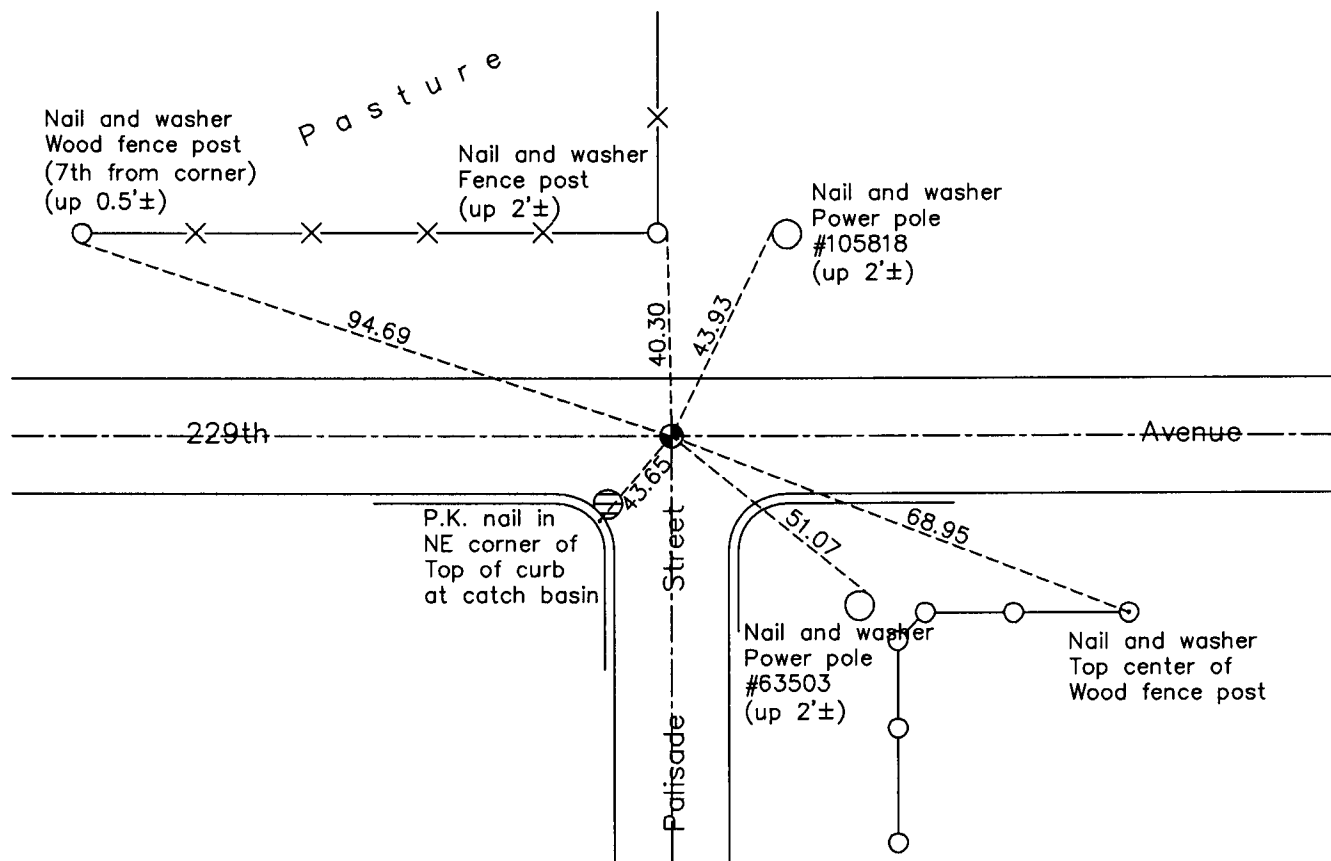
## North $\frac{1}{4}$ Corner of Sec. 4 Township 33 Range 23

On the 3rd day of July, 1962, the described corner was evidenced by a concrete monument

and to perpetuate the location of said corner, at the exact location thereof, a permanent marker was placed consisting of a cast iron monument on centerline-centerline

AND on the 24th day of July, 2012, said permanent marker was found and the ties were updated

Updated reference ties are as shown below.



Revision Date

4/15/13

N.A.D. 1983 Coordinates  
(1996 Adjustment)

County Project Coordinates

Northing 227523.2115

Easting 513564.3420

Date 3/26/02

I hereby certify that this United States public land survey monument record is correct and complete to the best of my knowledge and belief.

*Larry D. Hoium* Date 4/15/13

Larry D. Hoium, Anoka County Surveyor

Minnesota License Number 18165