

CERTIFICATE OF LOCATION OF GOVERNMENT CORNER

County of Anoka

State of Minnesota

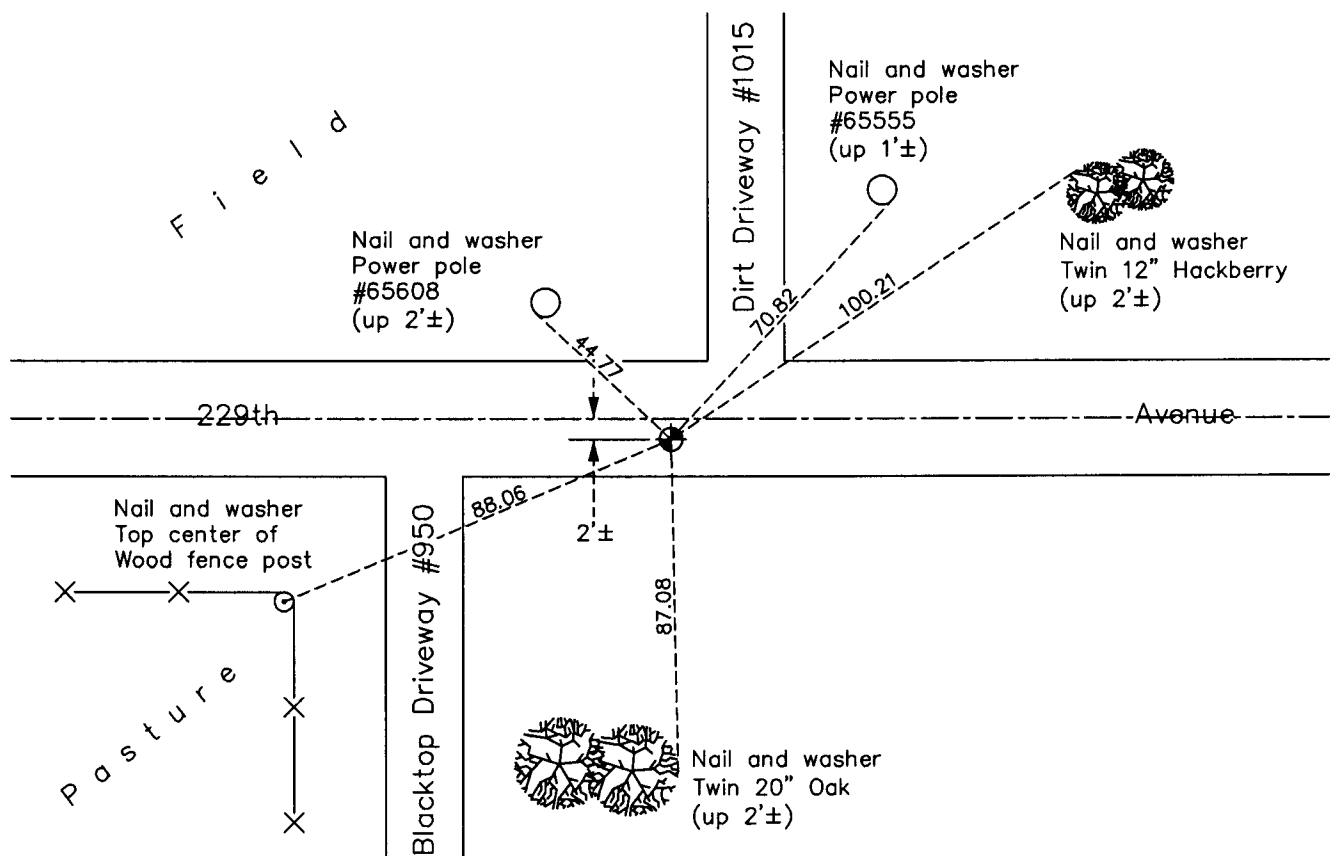
Northwest Corner of Sec. 5 Township 33 Range 23

On the 24th day of September, 1964, the described corner was evidenced by a sandstone monument

and to perpetuate the location of said corner, at the exact location thereof, a permanent marker was placed consisting of a cast iron monument

AND on the 2nd day of January, 2013, said permanent marker was found and the ties were updated

Updated reference ties are as shown below.



N

 W ANOKA COUNTY SURVEYOR E
 S

Revision Date
4/15/13

N.A.D. 1983 Coordinates
(1996 Adjustment)

County Project Coordinates	
Northing	<u>227421.7044</u>
Easting	<u>505690.8616</u>
Date	<u>5/20/02</u>

I hereby certify that this United States public land survey monument record is correct and complete to the best of my knowledge and belief.

Larry D. Hoium Date 4/15/13

Larry D. Hoium, Anoka County Surveyor
 Minnesota License Number 18165