

CERTIFICATE OF LOCATION OF GOVERNMENT CORNER

County of Anoka

State of Minnesota

Witness Corner of Sec. 4 Township 33 Range 23

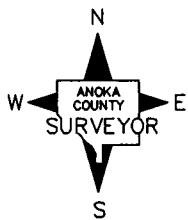
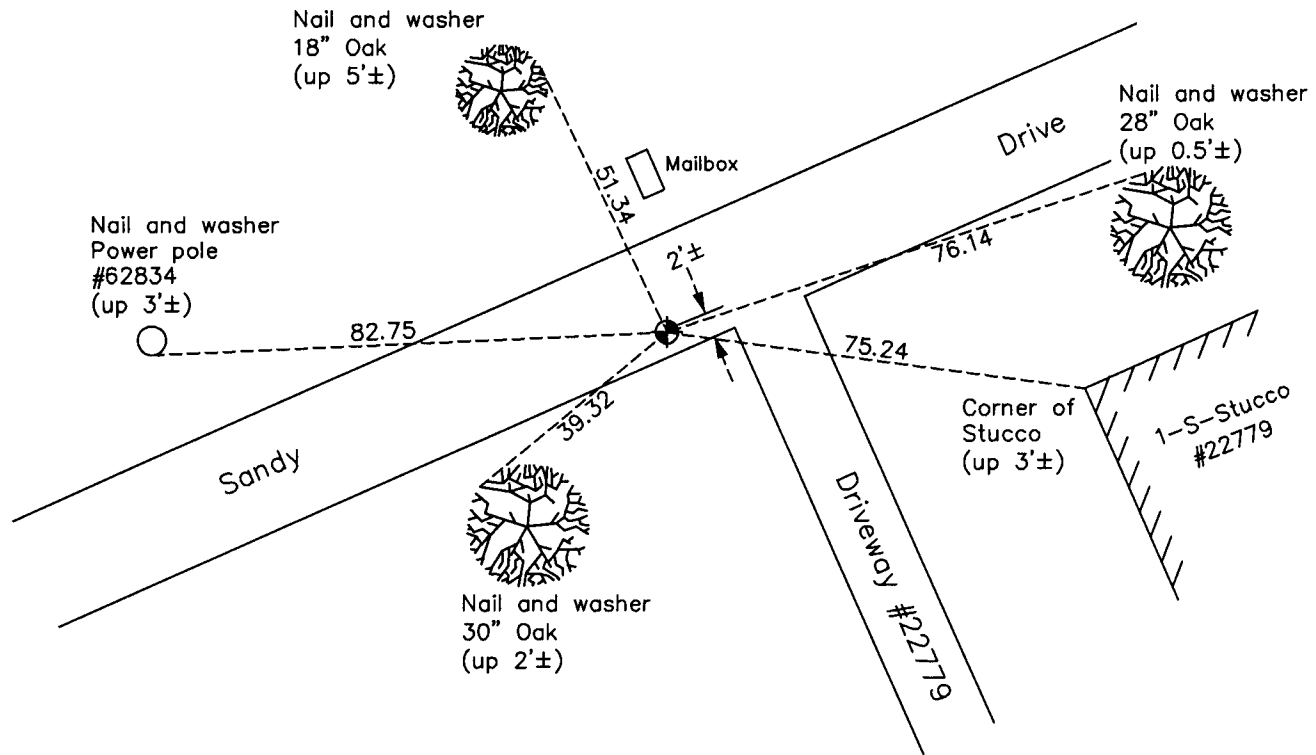
(on west line of NW 1/4)

On the 23rd day of July, 1993, the described corner was evidenced by area resurvey

and to perpetuate the location of said corner, at the exact location thereof, a permanent marker was placed consisting of a cast iron monument

AND on the 25th day of July, 2012, said permanent marker was found and the ties were updated

Updated reference ties are as shown below.



Revision Date
4/15/13

N.A.D. 1983 Coordinates
(1996 Adjustment)

County Project Coordinates	
Northing	<u>226758.1504</u>
Easting	<u>510866.1105</u>
Date	<u>4/02/02</u>

I hereby certify that this United States public land survey monument record is correct and complete to the best of my knowledge and belief.

Larry D. Hoium Date 4/15/13

Larry D. Hoium, Anoka County Surveyor

Minnesota License Number 18165