

CERTIFICATE OF LOCATION OF GOVERNMENT CORNER

County of Anoka

State of Minnesota

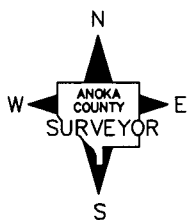
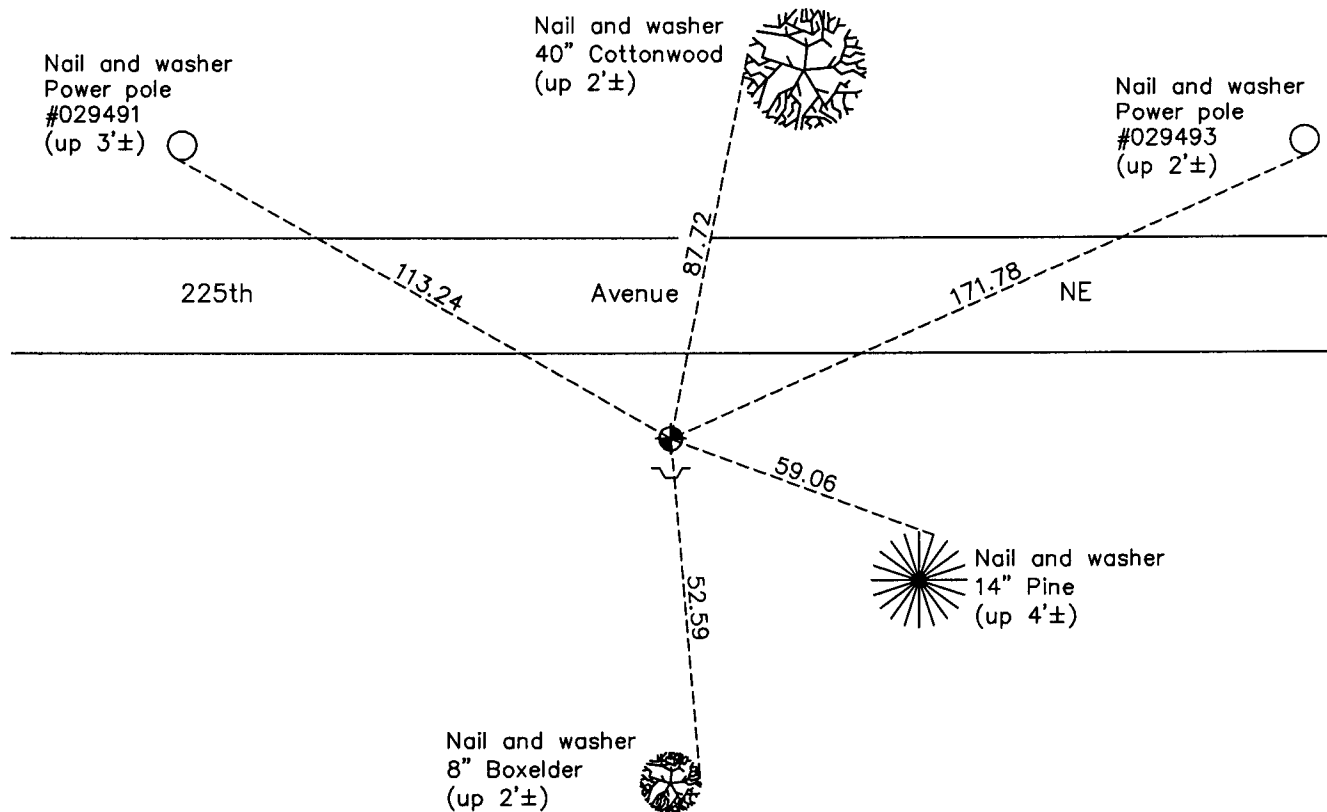
West 1/4 Corner of Sec. 4 Township 33 Range 23

On the 5th day of August, 1968, the described corner was evidenced by a cast iron monument (labeled "Property Corner")

and to perpetuate the location of said corner, at the exact location thereof, a permanent marker was placed consisting of the same cast iron monument with a sign and post on the south side

AND on the 30th day of August, 2012, said permanent marker was found and the ties were updated

Updated reference ties are as shown below.



Revision Date

4/15/13

N.A.D. 1983 Coordinates
(1996 Adjustment)

County Project Coordinates

Northing 224876.2893

Easting 510636.0941

Date 4/02/02

I hereby certify that this United States public land survey monument record is correct and complete to the best of my knowledge and belief.

Larry D. Hoium Date 4/15/13

Larry D. Hoium, Anoka County Surveyor

Minnesota License Number 18165