

# CERTIFICATE OF LOCATION OF GOVERNMENT CORNER

County of Anoka

State of Minnesota

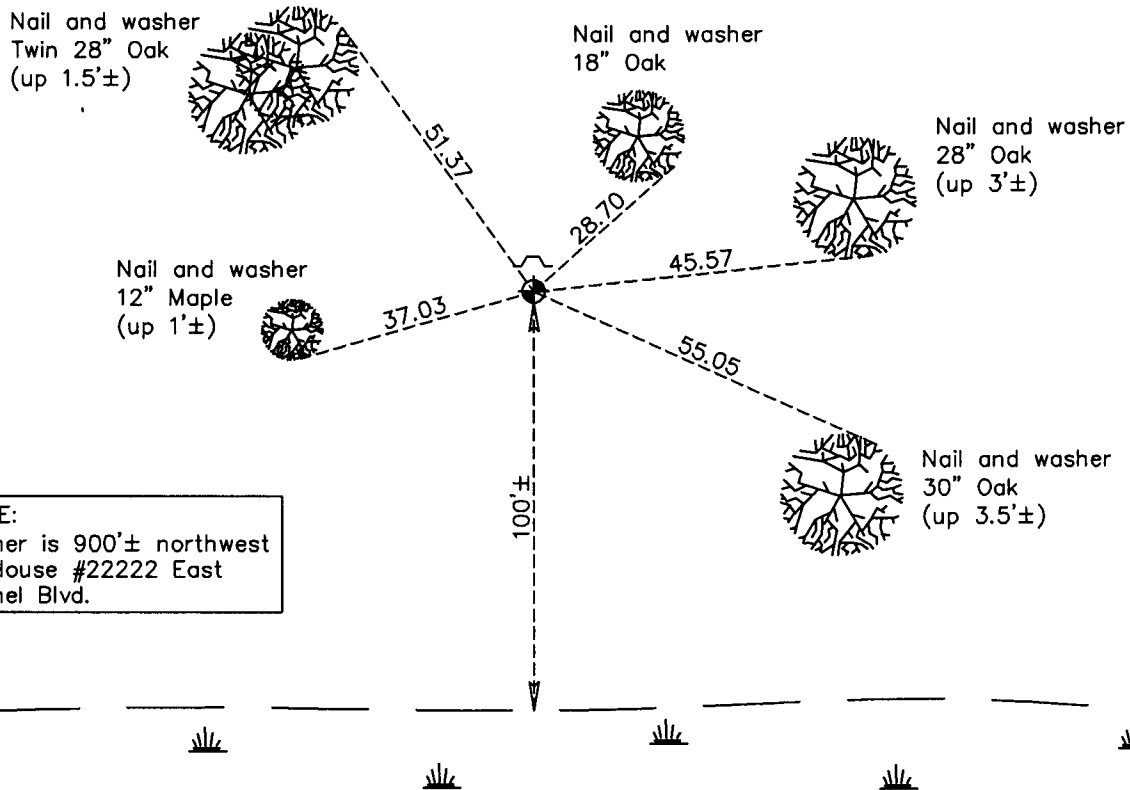
Witness Corner of Sec. 3 Township 33 Range 23  
 (on east line of SE 1/4)

On the 8th day of February, 1984, the described corner was evidenced by area resurvey

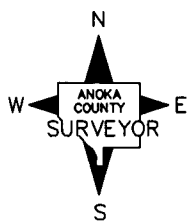
and to perpetuate the location of said corner, at the exact location thereof, a permanent marker was placed consisting of a cast iron monument with a sign and post on the north side

AND on the 18th day of January, 2013, said permanent marker was found and the ties were updated

Updated reference ties are as shown below.



NOTE:  
 Corner is 900'± northwest  
 of House #22222 East  
 Bethel Blvd.



Revision Date  
4/16/13

N.A.D. 1983 Coordinates  
 (1996 Adjustment)

County Project Coordinates	
Northing	223492.8741
Easting	521112.6879
Date	3/12/03

I hereby certify that this United States public land survey monument record is correct and complete to the best of my knowledge and belief.

*Larry D. Hoium* Date 4/16/13

Larry D. Hoium, Anoka County Surveyor

Minnesota License Number 18165