

# CERTIFICATE OF LOCATION OF GOVERNMENT CORNER

County of Anoka

State of Minnesota

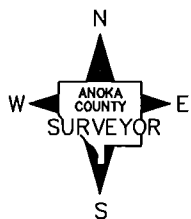
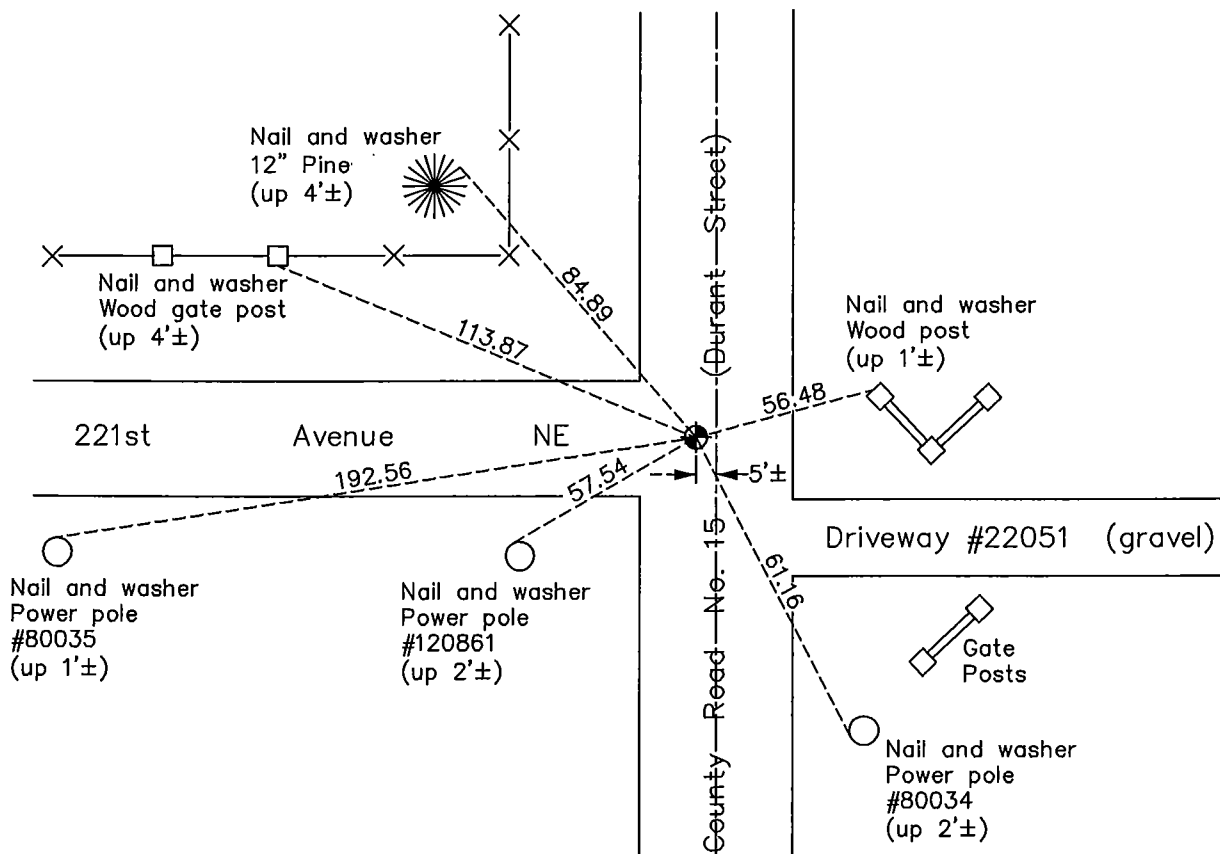
## Northeast Corner of Sec. 11 Township 33 Range 23

On the 8th day of November, 1963, the described corner was evidenced by a 3/4" iron pipe from area resurvey

and to perpetuate the location of said corner, at the exact location thereof, a permanent marker was placed consisting of a cast iron monument

AND on the 25th day of April, 2012, said permanent marker was found broken off.  
Ties were updated using center of fins of broken monument as position of corner.

Updated reference ties are as shown below.



Revision Date  
5/10/12

N.A.D. 1983 Coordinates  
 (1996 Adjustment)

County Project Coordinates	
Northing	222151.0570
Easting	526180.8702
Date	4/02/02

I hereby certify that this United States public land survey monument record is correct and complete to the best of my knowledge and belief.

*Larry D. Hoium* Date 5/10/12

Larry D. Hoium, Anoka County Surveyor  
 Minnesota License Number 18165