

CERTIFICATE OF LOCATION OF GOVERNMENT CORNER

County of Anoka

State of Minnesota

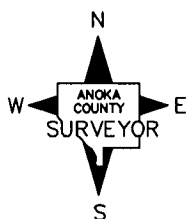
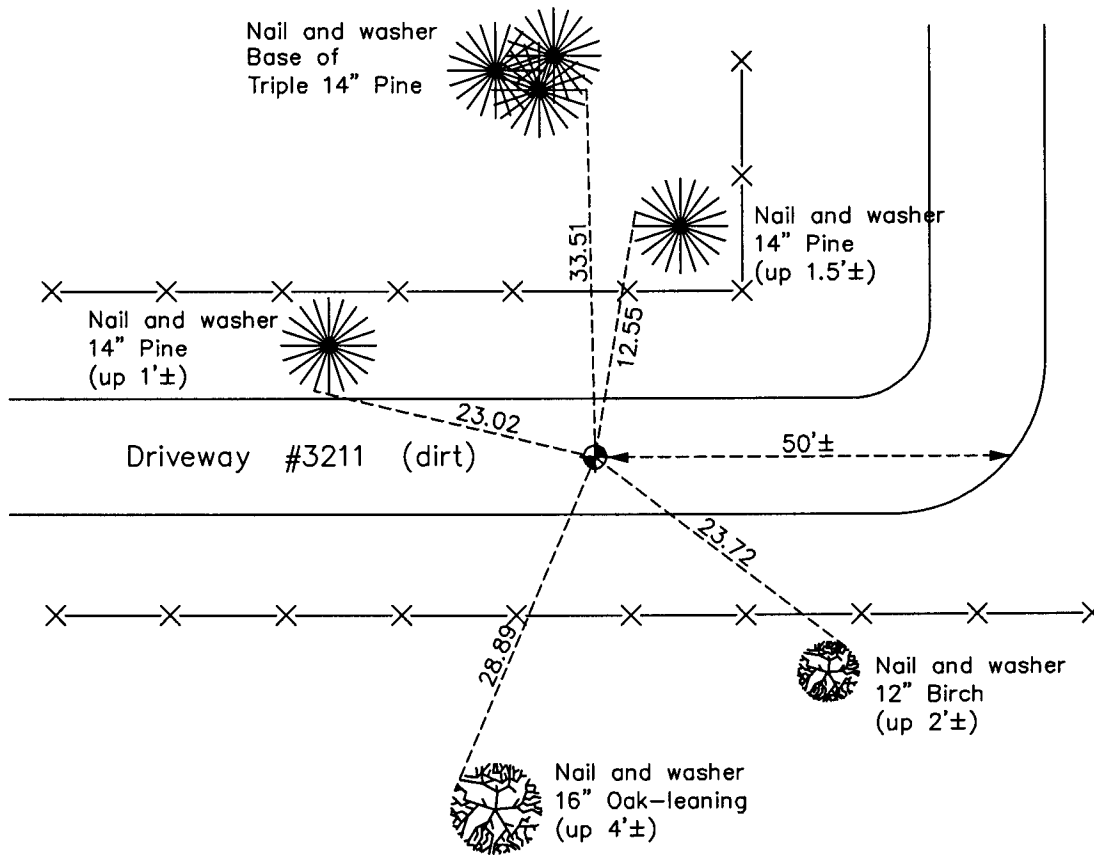
Witness Corner of Sec. 3 Township 33 Range 23
 (on south line of SE 1/4)

On the 8th day of February, 1984, the described corner was evidenced by area resurvey

and to perpetuate the location of said corner, at the exact location thereof, a permanent marker was placed consisting of a cast iron monument

AND on the 26th day of July, 2012, said permanent marker was found and the ties
were updated

Updated reference ties are as shown below.



Revision Date
5/14/13

N.A.D. 1983 Coordinates
 (1996 Adjustment)

County Project Coordinates	
Northing	222188.4717
Easting	519228.9300
Date	7/02/02

I hereby certify that this United States public land survey monument record is correct and complete to the best of my knowledge and belief.

Larry D. Hoium Date 5/14/13

Larry D. Hoium, Anoka County Surveyor

Minnesota License Number 18165