

CERTIFICATE OF LOCATION OF GOVERNMENT CORNER

County of Anoka

State of Minnesota

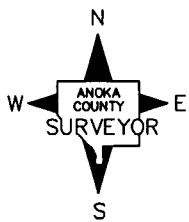
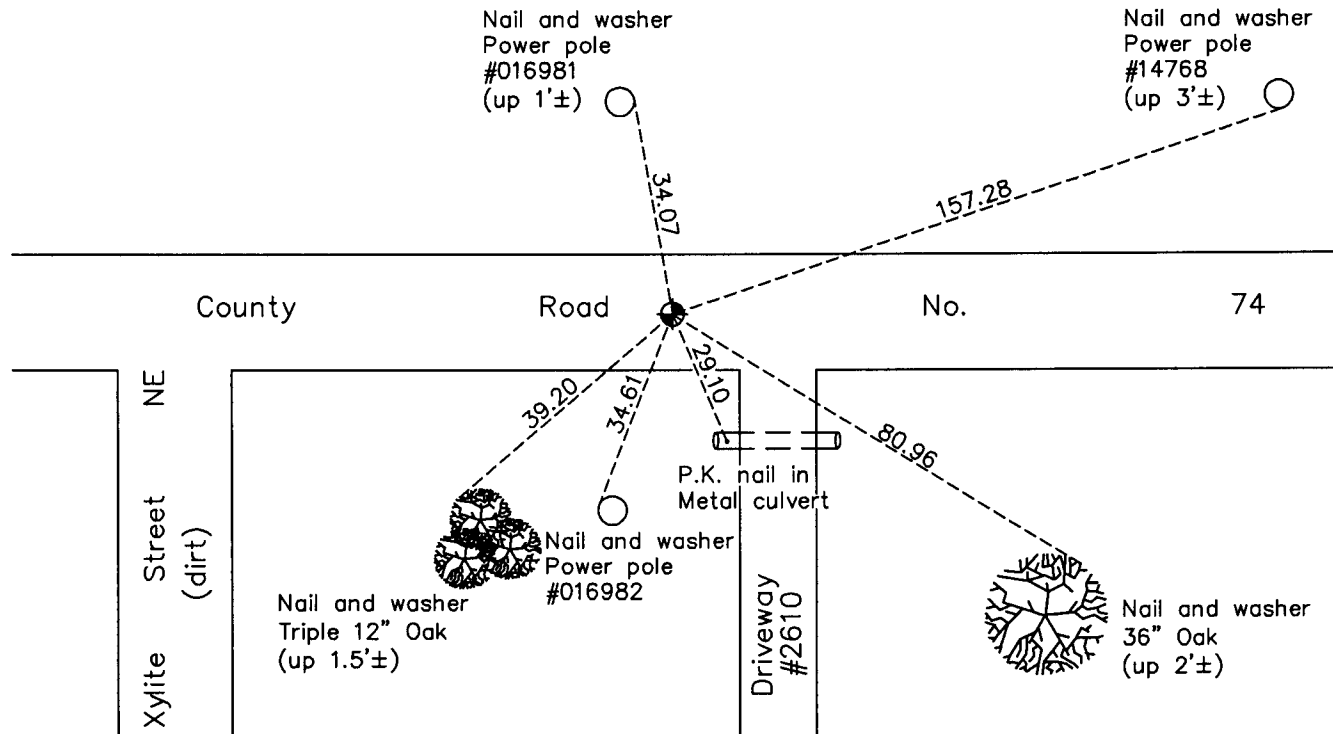
Northeast Corner of Sec. 9 Township 33 Range 23

On the 30th day of April, 1957, the described corner was evidenced by a concrete monument

and to perpetuate the location of said corner, at the exact location thereof, a permanent marker was placed consisting of a cast iron monument

AND on the 30th day of August, 2012, said permanent marker was found and the ties were updated

Updated reference ties are as shown below.



Revision Date
5/15/13

N.A.D. 1983 Coordinates
(1996 Adjustment)

County Project Coordinates	
Northing	222171.9048
Easting	515705.5851
Date	4/03/02

I hereby certify that this United States public land survey monument record is correct and complete to the best of my knowledge and belief.

Larry D. Hoium Date 5/15/13

Larry D. Hoium, Anoka County Surveyor

Minnesota License Number 18165