

# CERTIFICATE OF LOCATION OF GOVERNMENT CORNER

County of Anoka State of Minnesota

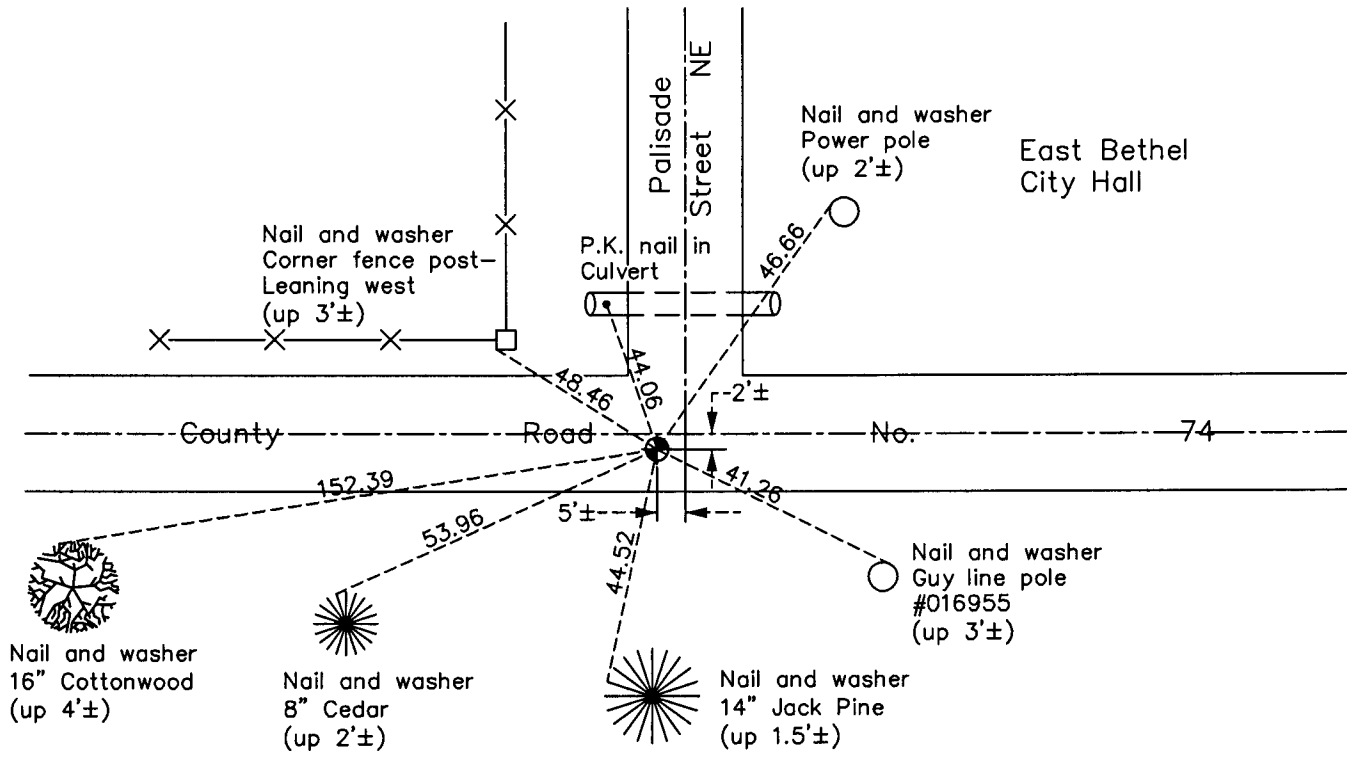
## North 1/4 Corner of Sec. 9 Township 33 Range 23

On the 22nd day of September, 1964, the described corner was evidenced by a concrete monument

and to perpetuate the location of said corner, at the exact location thereof, a permanent marker was placed consisting of a cast iron monument

AND on the 30th day of August, 2012, said permanent marker was found and the ties were updated

Updated reference ties are as shown below.



N  
W ANOKA COUNTY SURVEYOR E  
S

Revision Date  
5/15/13

N.A.D. 1983 Coordinates  
(1996 Adjustment)

County Project Coordinates	
Northing	222197.2056
Easting	513015.6450
Date	4/04/02

I hereby certify that this United States public land survey monument record is correct and complete to the best of my knowledge and belief.

*Larry D. Hoium* Date 5/15/13  
 Larry D. Hoium, Anoka County Surveyor  
 Minnesota License Number 18165