

# CERTIFICATE OF LOCATION OF GOVERNMENT CORNER

County of Anoka

State of Minnesota

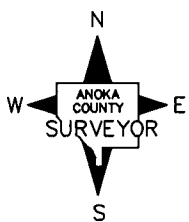
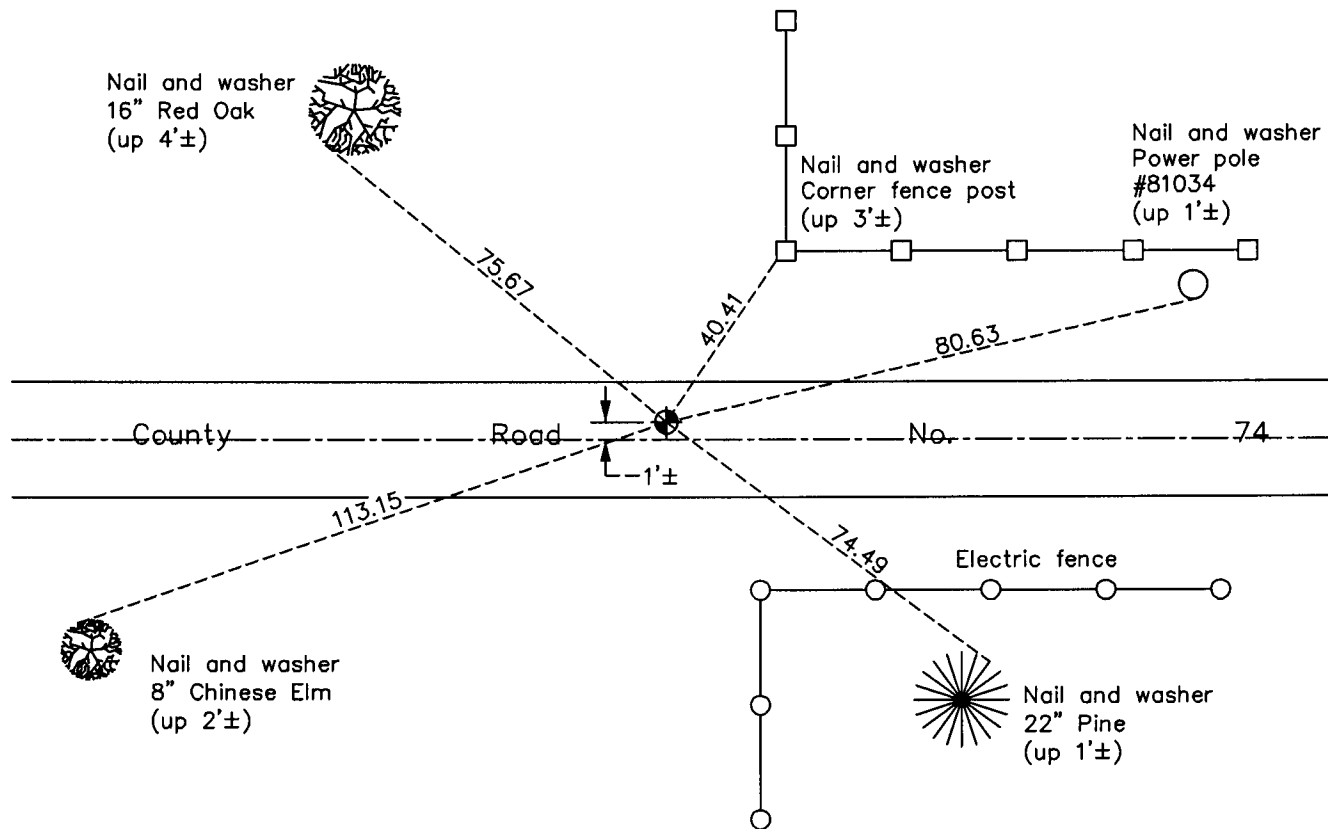
## Southwest Corner of Sec. 4 Township 33 Range 23

On the 18th day of April, 1960, the described corner was evidenced by a concrete monument

and to perpetuate the location of said corner, at the exact location thereof, a permanent marker was placed consisting of a cast iron monument

AND on the 30th day of August, 2012, said permanent marker was found and the ties were updated

Updated reference ties are as shown below.



Revision Date  
5/17/13

N.A.D. 1983 Coordinates  
(1996 Adjustment)

County Project Coordinates	
Northing	222235.9360
Easting	510333.2737
Date	4/02/02

I hereby certify that this United States public land survey monument record is correct and complete to the best of my knowledge and belief.

*Larry D. Hoium* Date 5/17/13

Larry D. Hoium, Anoka County Surveyor  
Minnesota License Number 18165