

CERTIFICATE OF LOCATION OF GOVERNMENT CORNER

County of Anoka

State of Minnesota

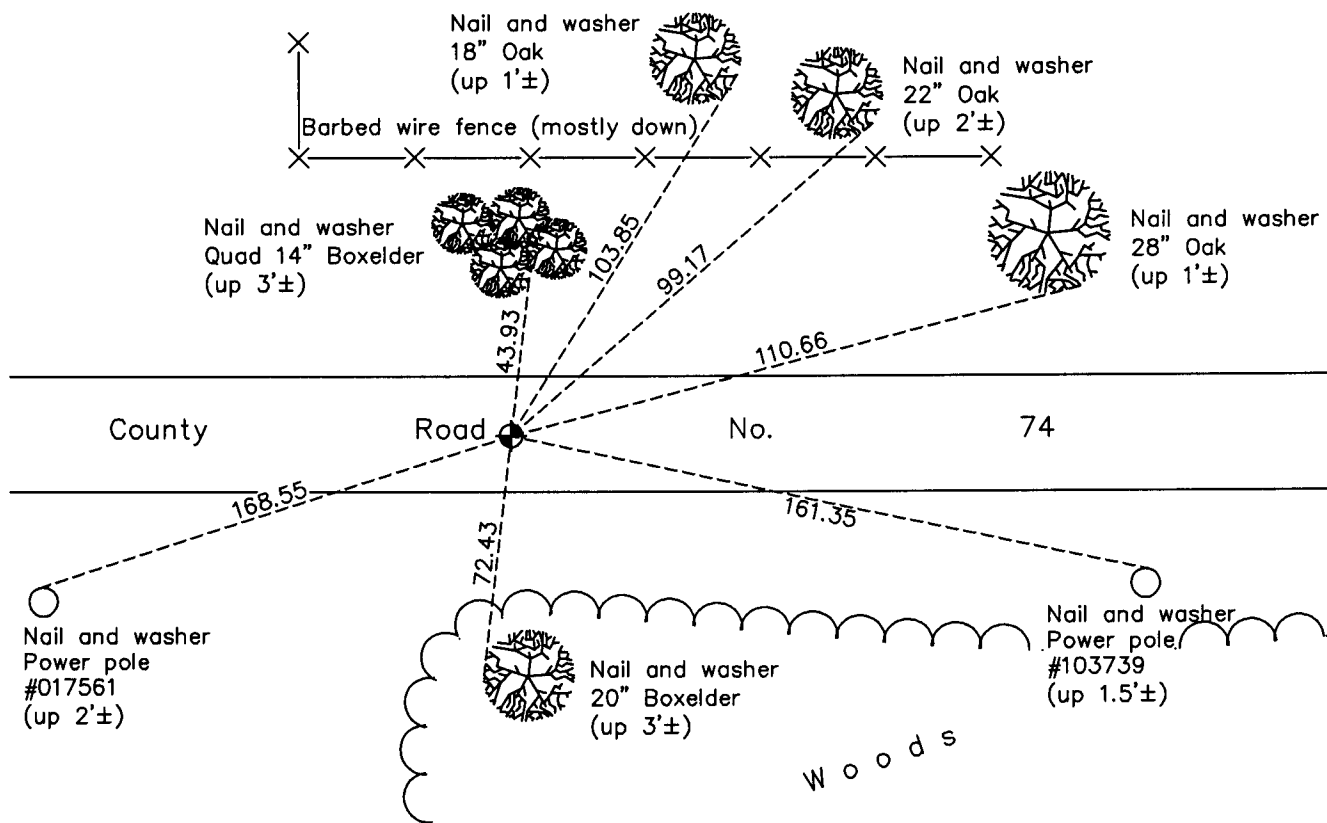
South 1/4 Corner of Sec. 6 Township 33 Range 23

On the 2nd day of August, 1968, the described corner was evidenced by an iron pipe
set by N.C. Hoium

and to perpetuate the location of said corner, at the exact location thereof, a permanent marker
 was placed consisting of a cast iron monument

AND on the 18th day of January, 2013, said permanent marker was found and the ties
were updated

Updated reference ties are as shown below.



N

 W ANOKA COUNTY SURVEYOR E
 S

Revision Date
5/17/13

N.A.D. 1983 Coordinates
 (1996 Adjustment)

County Project Coordinates	
Northing	222269.7014
Easting	502458.3100
Date	4/04/02

I hereby certify that this United States public land survey monument record is correct and complete to the best of my knowledge and belief.

Larry D. Hoium Date 5/17/13

Larry D. Hoium, Anoka County Surveyor
 Minnesota License Number 18165