

CERTIFICATE OF LOCATION OF GOVERNMENT CORNER

County of Anoka

State of Minnesota

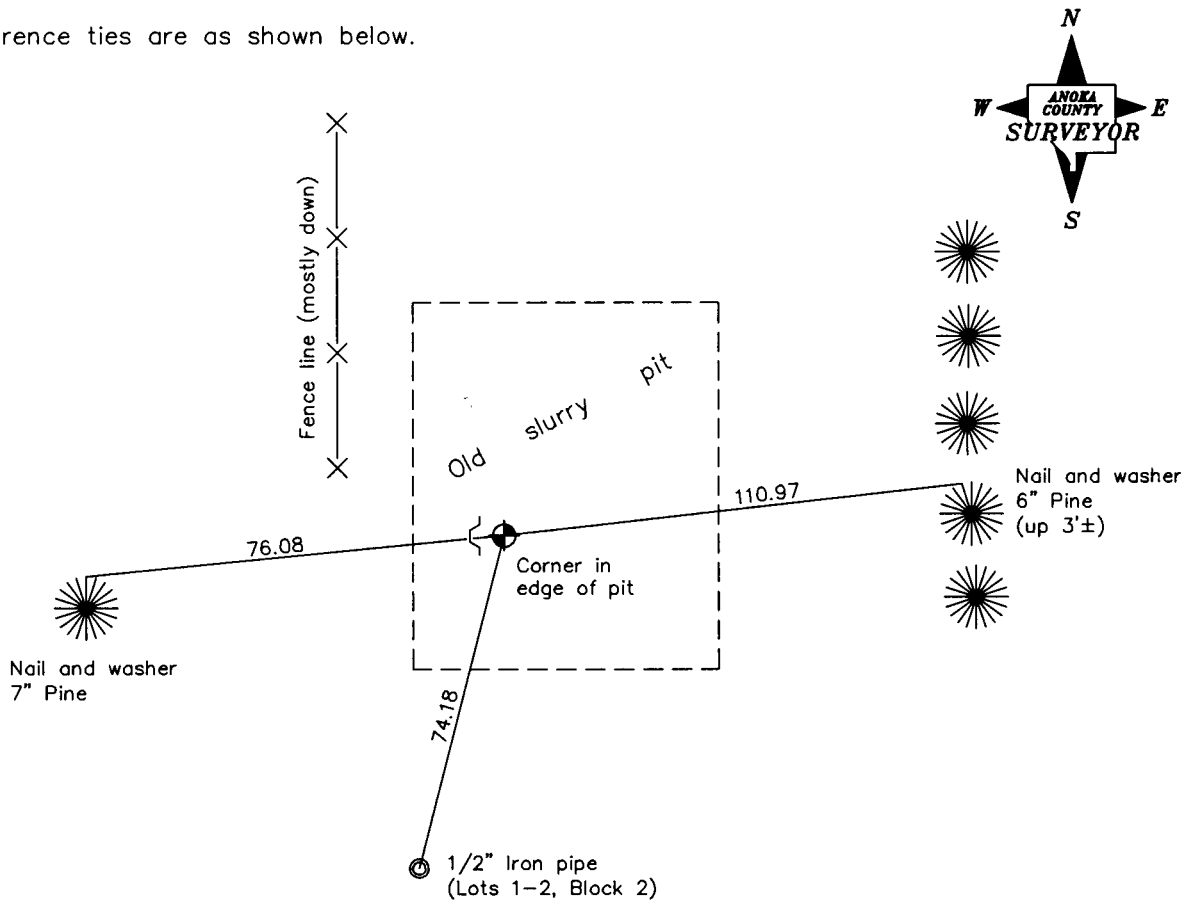
West 1/4 Corner of Sec. 8 Township 33 Range 23

On the 5th day of February, 1963, the described corner was evidenced by a cast iron monument

and to perpetuate the location of said corner, at the exact location thereof, a permanent marker was placed consisting of a cast iron monument with a sign and post on the west side

AND on the 16th day of May, 2000, said permanent marker was found and the ties were updated

Updated reference ties are as shown below.



Revised date
8/19/92
5/16/00

N.A.D. 1983 Coordinates (1996 Adjustment)	
County Project Coordinates	
Northing	219647.2576
Easting	505023.7635
Date	3/17/03

I hereby certify that this United States public land survey monument record is correct and complete to the best of my knowledge and belief.

Larry D. Hoium Date 5/16/00

Larry D. Hoium, Anoka County Surveyor

Minnesota License Number 18165