

# CERTIFICATE OF LOCATION OF GOVERNMENT CORNER

County of Anoka

State of Minnesota

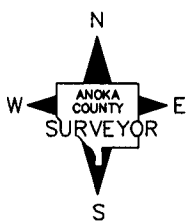
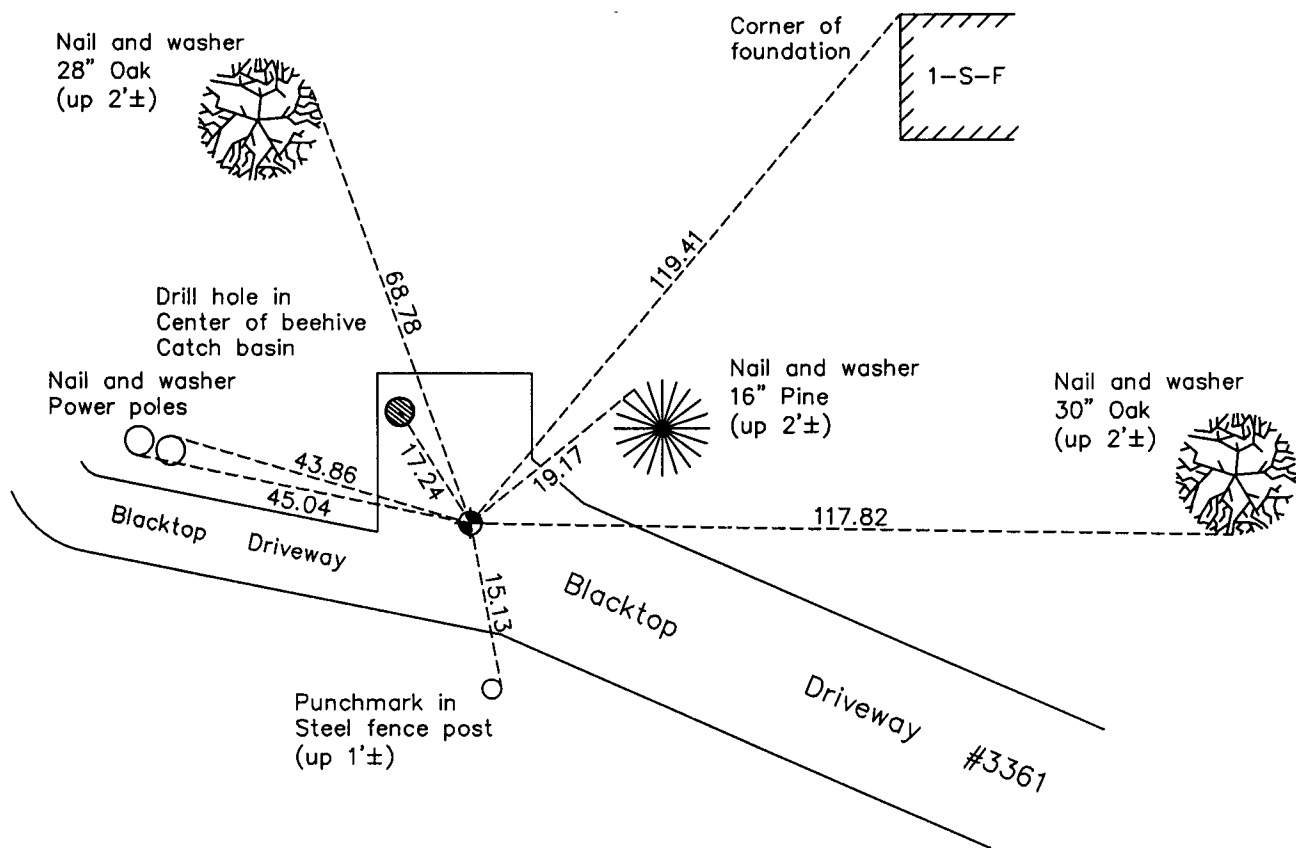
## West 1/4 Corner of Sec. 11 Township 33 Range 23

On the 8th day of November, 1963, the described corner was evidenced by area resurvey

and to perpetuate the location of said corner, at the exact location thereof, a permanent marker was placed consisting of a cast iron monument

AND on the 16th day of January, 2013, said permanent marker was not found. A P.K. nail was found but location was questionable. Set 1/2" iron pipe w/ cap at GPS location, updated ties.

Updated reference ties are as shown below.



Revision Date  
1/29/13

N.A.D. 1983 Coordinates  
(1996 Adjustment)

County Project Coordinates	
Northing	219565.9113
Easting	520971.1380
Date	7/02/02

I hereby certify that this United States public land survey monument record is correct and complete to the best of my knowledge and belief.

*Larry D. Hoium* Date 1/29/13

Larry D. Hoium, Anoka County Surveyor

Minnesota License Number 18165