

CERTIFICATE OF LOCATION OF GOVERNMENT CORNER

County of Anoka State of Minnesota

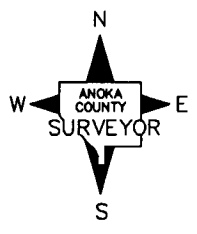
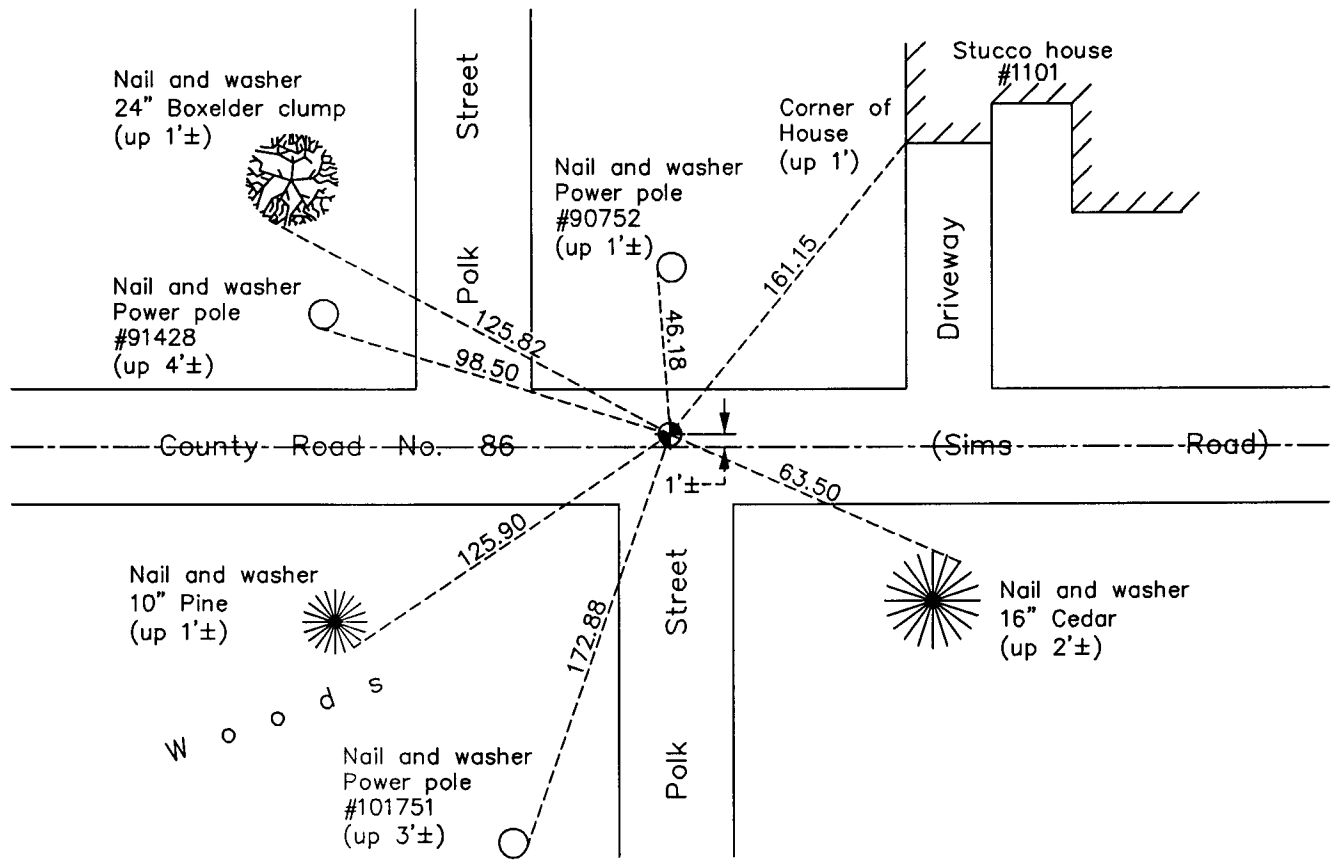
Southwest Corner of Sec. 8 Township 33 Range 23

On the 23rd day of February, 1962, the described corner was evidenced by a cast iron monument (down 1'±)

and to perpetuate the location of said corner, at the exact location thereof, a permanent marker was placed consisting of a cast iron monument

AND on the 25th day of January, 2013, said permanent marker was found and the ties were updated

Updated reference ties are as shown below.



Revision Date
 6/20/13

N.A.D. 1983 Coordinates
 (1996 Adjustment)

County Project Coordinates	
Northing	217011.4609
Easting	505010.9149
Date	4/05/02

I hereby certify that this United States public land survey monument record is correct and complete to the best of my knowledge and belief.

Larry D. Hoium Date 6/20/13

Larry D. Hoium, Anoka County Surveyor
 Minnesota License Number 18165