

# CERTIFICATE OF LOCATION OF GOVERNMENT CORNER

County of Anoka

State of Minnesota

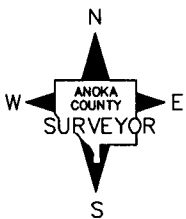
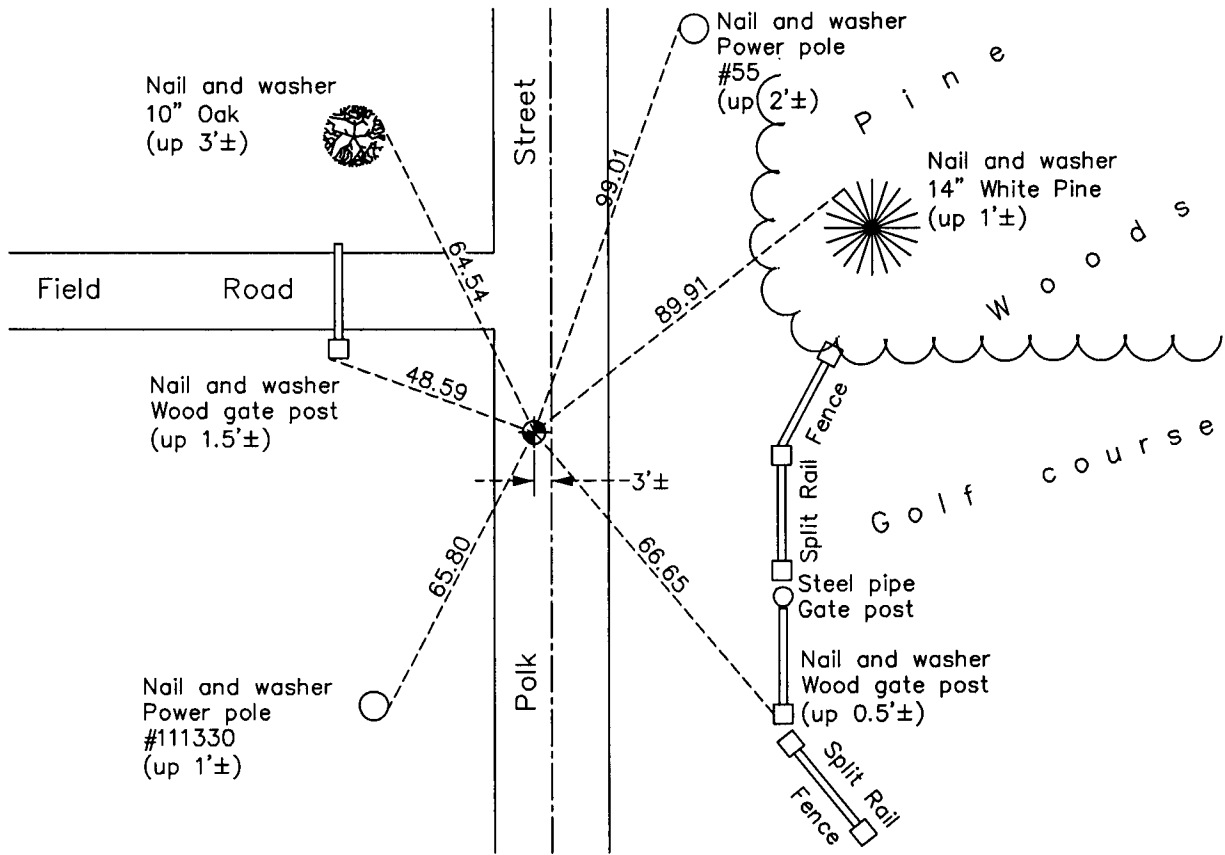
## West 1/4 Corner of Sec. 17 Township 33 Range 23

On the 11th day of September, 1962, the described corner was evidenced by a 3/4" iron pipe

and to perpetuate the location of said corner, at the exact location thereof, a permanent marker was placed consisting of a cast iron monument

AND on the      day of February, 2013, said permanent marker was found and the ties were updated

Updated reference ties are as shown below.



Revision Date  
6/21/13

N.A.D. 1983 Coordinates  
(1996 Adjustment)

County Project Coordinates	
Northing	<u>214345.0653</u>
Easting	<u>505012.6552</u>
Date	<u>7/08/02</u>

I hereby certify that this United States public land survey monument record is correct and complete to the best of my knowledge and belief.

*Larry D. Hoium* Date 6/21/13

Larry D. Hoium, Anoka County Surveyor

Minnesota License Number 18165