

# CERTIFICATE OF LOCATION OF GOVERNMENT CORNER

County of Anoka

State of Minnesota

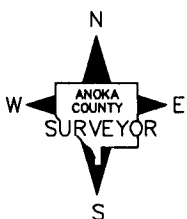
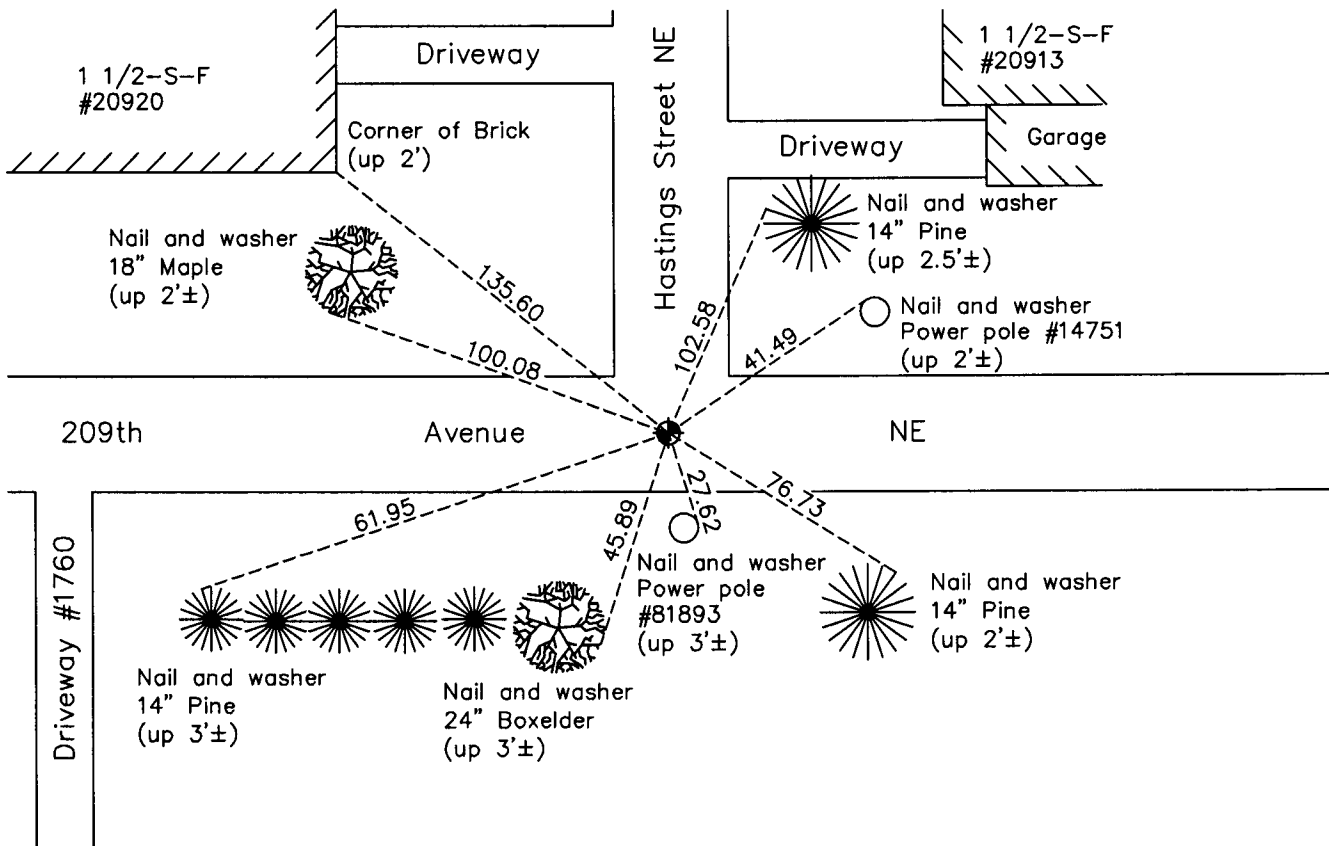
## East 1/4 Corner of Sec. 17 Township 33 Range 23

On the 11th day of September, 1962, the described corner was evidenced by a 3/4" iron pipe

and to perpetuate the location of said corner, at the exact location thereof, a permanent marker was placed consisting of a cast iron monument

AND on the 25th day of April, 2013, said permanent marker was found down 0.4'± and was raised to the surface on February 6, 2013. The ties were updated on April 25, 2013.

Updated reference ties are as shown below.



Revision Date

11/22/13

N.A.D. 1983 Coordinates  
(1996 Adjustment)

County Project Coordinates	
Northing	214268.0753
Easting	510277.7400
Date	5/20/02

I hereby certify that this United States public land survey monument record is correct and complete to the best of my knowledge and belief.

Date 11/22/13  
 Larry D. Hoium, Anoka County Surveyor  
 Minnesota License Number 18165