

CERTIFICATE OF LOCATION OF GOVERNMENT CORNER

County of Anoka

State of Minnesota

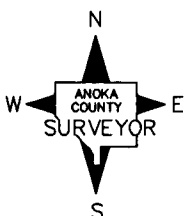
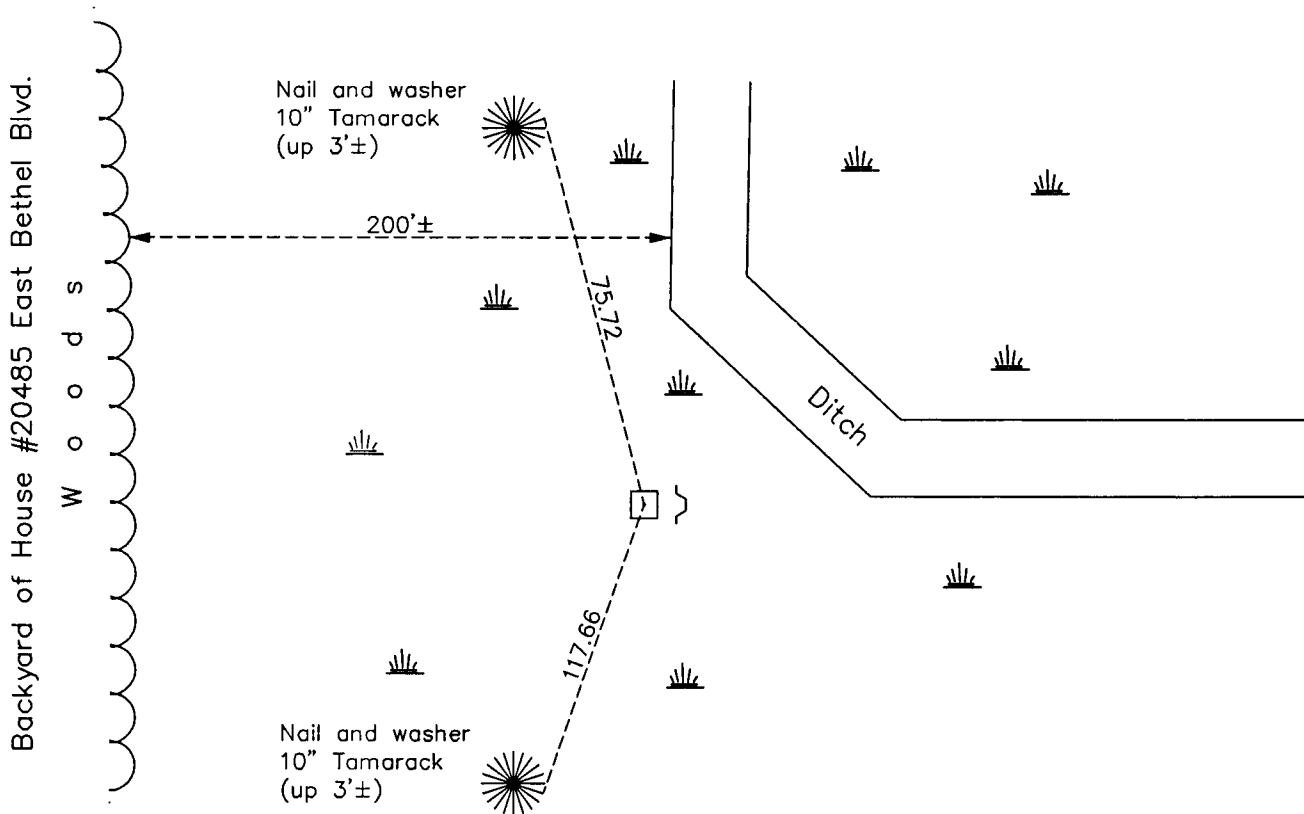
Northwest Corner of Sec. 23 Township 33 Range 23

On the 20th day of September, 1960, the described corner was evidenced by a granite monument

and to perpetuate the location of said corner, at the exact location thereof, a permanent marker was placed consisting of the same granite monument with a sign and post on the east side

AND on the 28th day of January, 2013, said permanent marker was found and the ties were updated

Updated reference ties are as shown below.



Revision Date
7/17/13

N.A.D. 1983 Coordinates
(1996 Adjustment)

County Project Coordinates	
Northing	211591.6277
Easting	520952.1771
Date	3/24/03

I hereby certify that this United States public land survey monument record is correct and complete to the best of my knowledge and belief.

Larry D. Hoium Date 7/17/13

Larry D. Hoium, Anoka County Surveyor
Minnesota License Number 18165