

CERTIFICATE OF LOCATION OF GOVERNMENT CORNER

County of Anoka

State of Minnesota

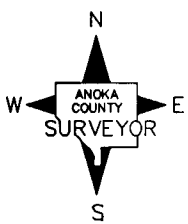
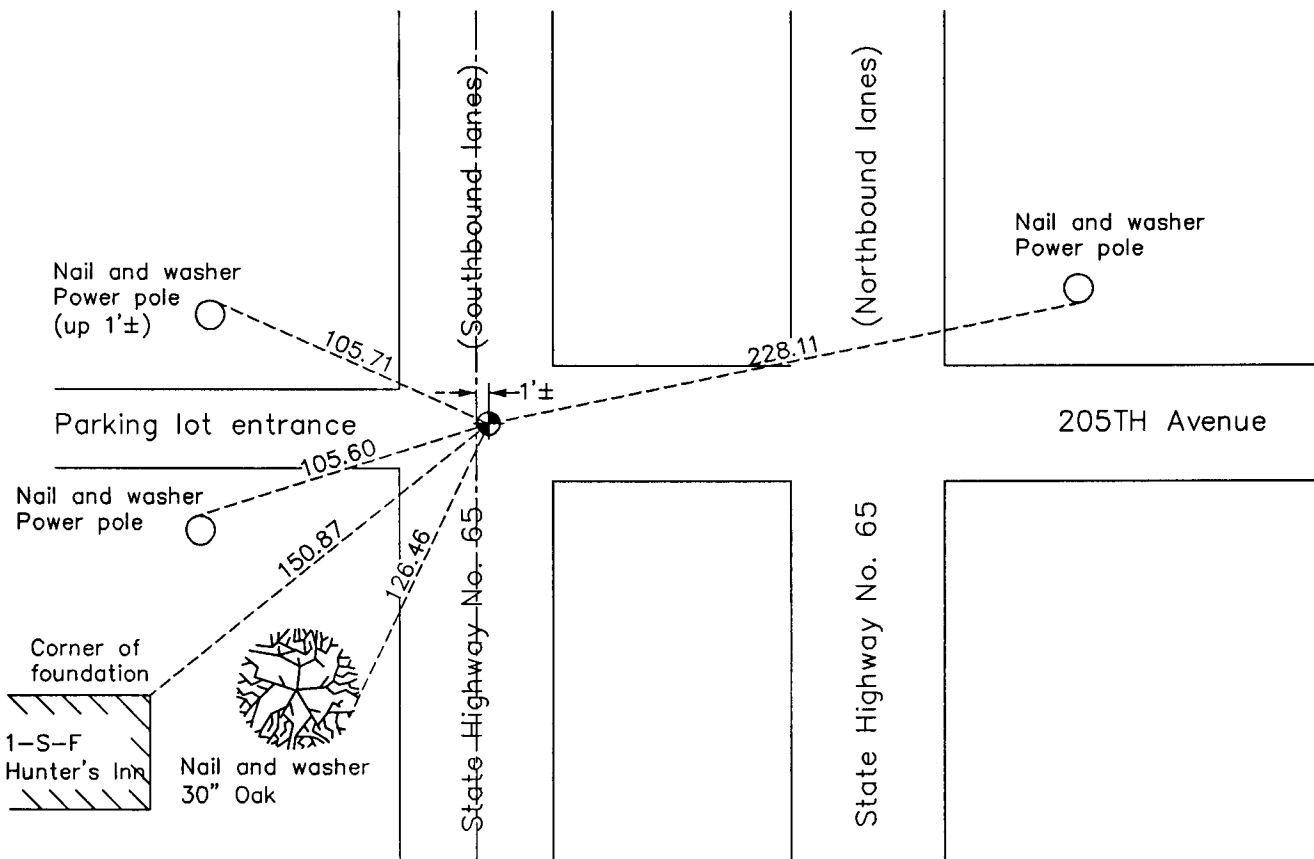
South 1/4 Corner of Sec. 17 Township 33 Range 23

On the 10th day of September, 1962, the described corner was evidenced by a concrete monument

and to perpetuate the location of said corner, at the exact location thereof, a permanent marker was placed consisting of a cast iron monument

AND on the 12th day of September, 2006, said permanent marker was found and raised to the surface

Updated reference ties are as shown below.



Revision Date
7/23/13

N.A.D. 1983 Coordinates
(1996 Adjustment)

County Project Coordinates	
Northing	211668.9786
Easting	507635.9908
Date	9/12/06

I hereby certify that this United States public land survey monument record is correct and complete to the best of my knowledge and belief.

Larry D. Hoium Date 7/23/13

 Larry D. Hoium, Anoka County Surveyor
 Minnesota License Number 18165