

# CERTIFICATE OF LOCATION OF GOVERNMENT CORNER

County of Anoka

State of Minnesota

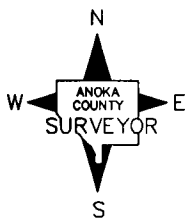
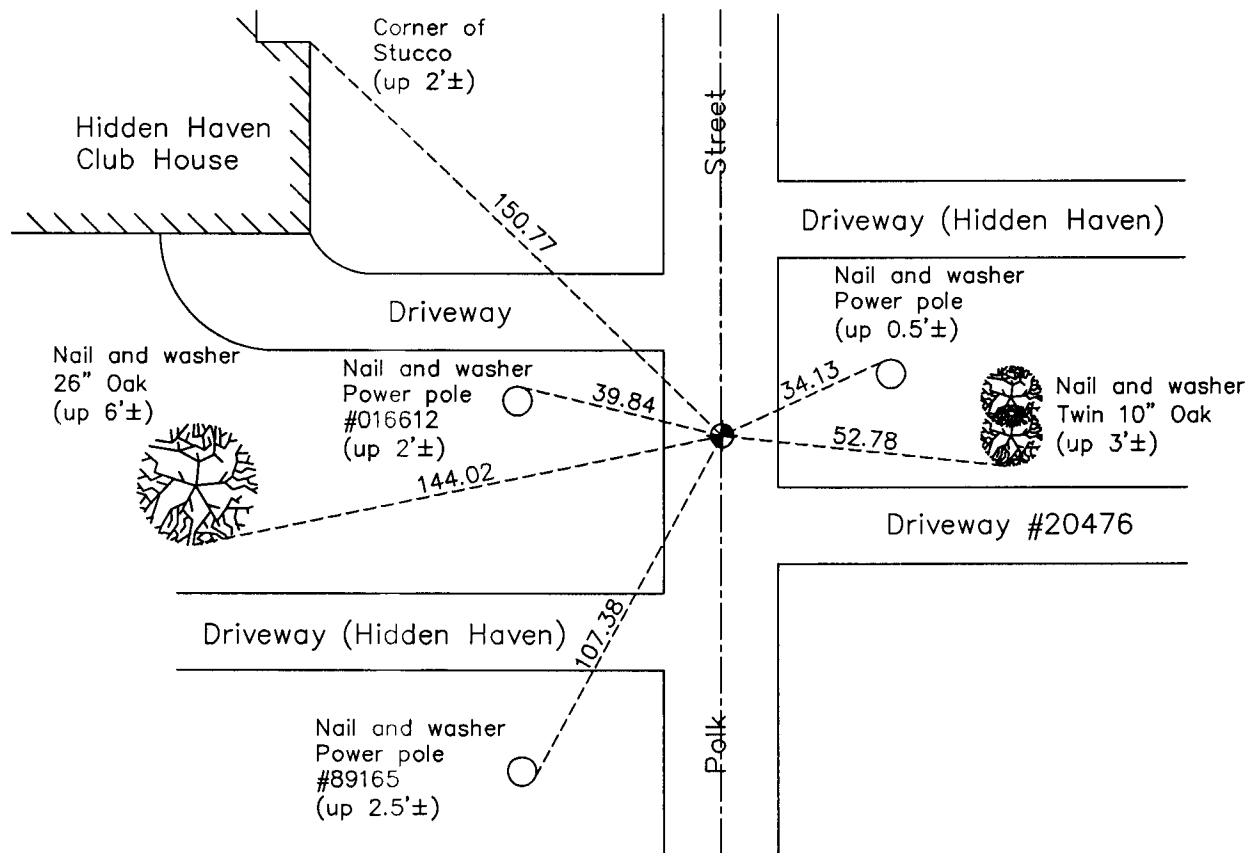
## Northwest Corner of Sec. 20 Township 33 Range 23

On the 13th day of February, 1962, the described corner was evidenced by a 1 1/2" broken well point

and to perpetuate the location of said corner, at the exact location thereof, a permanent marker was placed consisting of a cast iron monument

AND on the      day of January, 2013, said permanent marker was found and the ties were updated

Updated reference ties are as shown below.



Revision Date  
7/23/13

N.A.D. 1983 Coordinates  
(1996 Adjustment)

County Project Coordinates	
Northing	211678.6202
Easting	505014.8322
Date	4/05/02

I hereby certify that this United States public land survey monument record is correct and complete to the best of my knowledge and belief.

*Larry D. Hoium* Date 7/23/13

Larry D. Hoium, Anoka County Surveyor  
Minnesota License Number 18165