

CERTIFICATE OF LOCATION OF GOVERNMENT CORNER

County of Anoka

State of Minnesota

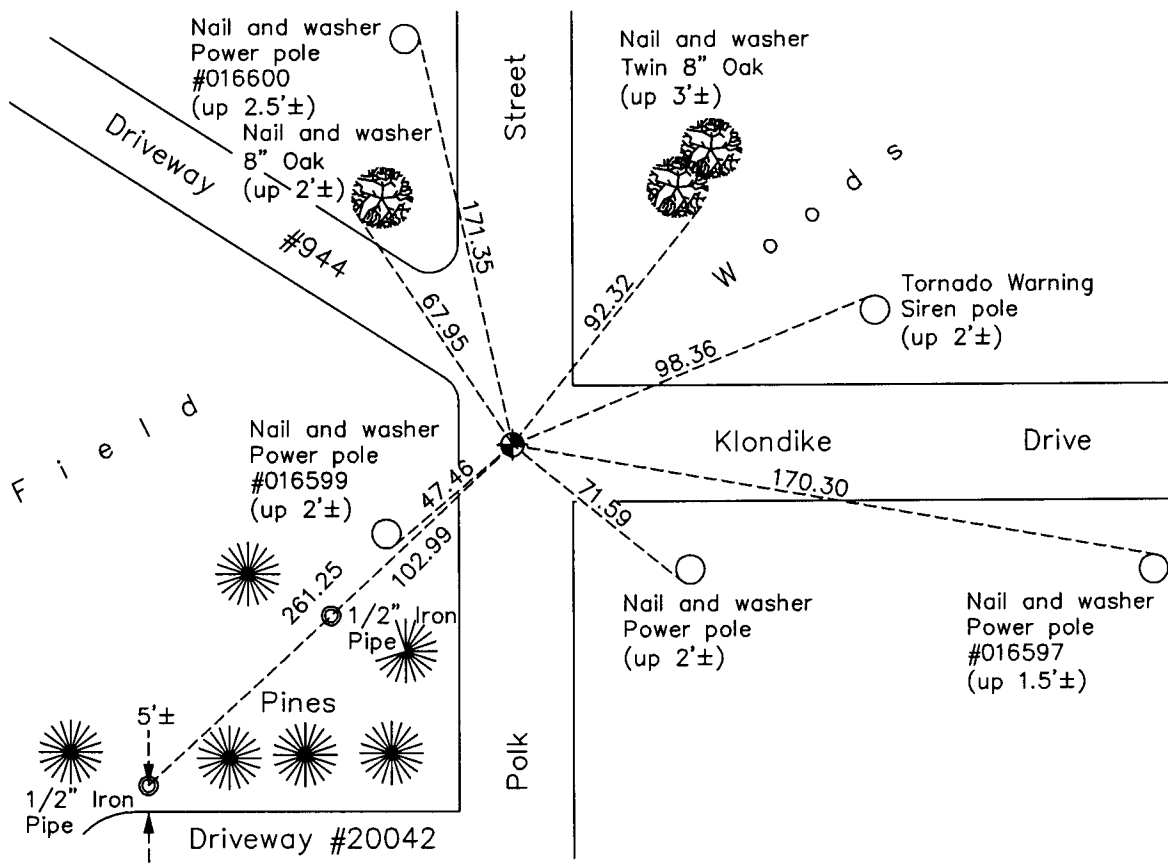
West 1/4 Corner of Sec. 20 Township 33 Range 23

On the 19th day of July, 1962, the described corner was evidenced by a broken
concrete monument

and to perpetuate the location of said corner, at the exact location thereof, a permanent marker
was placed consisting of a shortened cast iron monument set in concrete

AND on the 20th day of February, 2013, said permanent marker was found and the ties
were updated

Updated reference ties are as shown below.



N
W ANOKA COUNTY SURVEYOR E
S

Revision Date
7/23/13

N.A.D. 1983 Coordinates
(1996 Adjustment)

County Project Coordinates	
Northing	<u>209002.3017</u>
Easting	<u>505024.2165</u>
Date	<u>4/05/02</u>

I hereby certify that this United States public land survey monument record is correct and complete to the best of my knowledge and belief.

Larry D. Hoium Date 7/23/13

Larry D. Hoium, Anoka County Surveyor
Minnesota License Number 18165