

CERTIFICATE OF LOCATION OF GOVERNMENT CORNER

County of Anoka

State of Minnesota

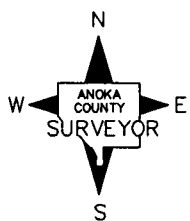
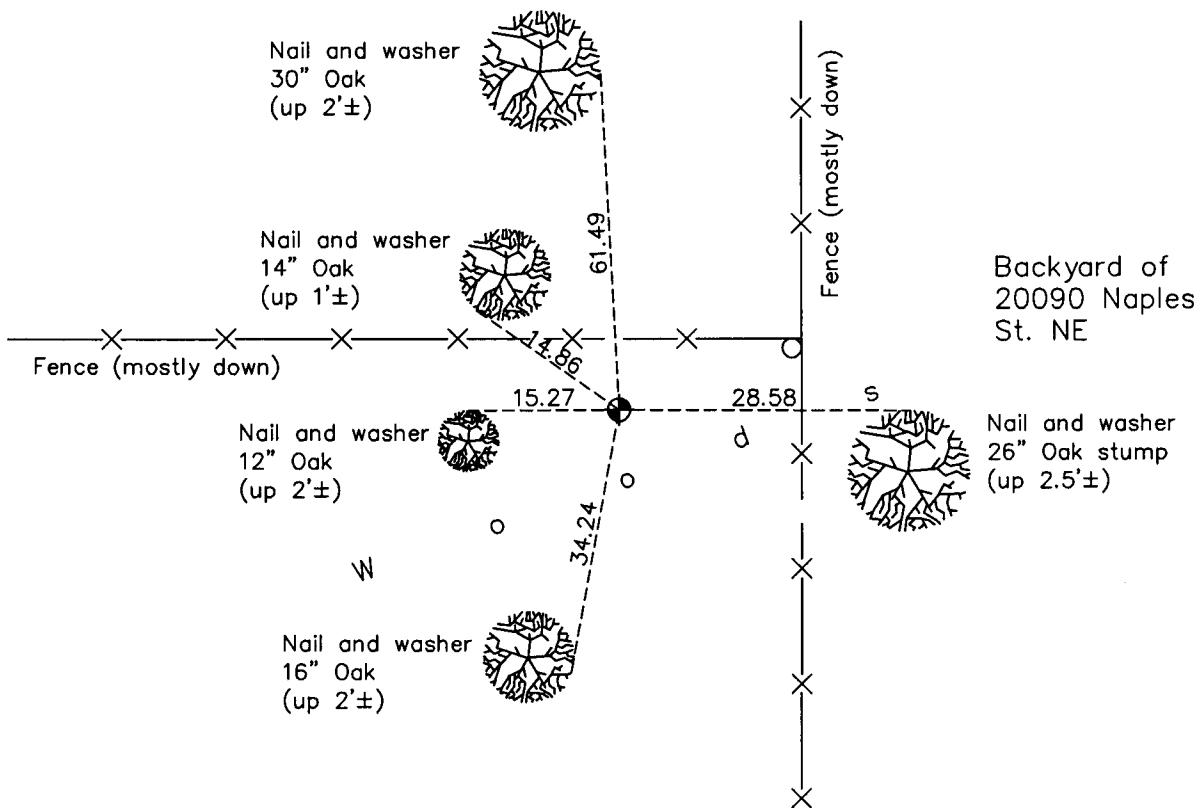
East 1/4 Corner of Sec. 22 Township 33 Range 23

On the 31st day of October, 1963, the described corner was evidenced by a cast iron monument set by N.C. Hoium

and to perpetuate the location of said corner, at the exact location thereof, a permanent marker was placed consisting of the same cast iron monument

AND on the 8th day of July, 2002, said permanent marker was found down 0.3'± and the ties were updated

Updated reference ties are as shown below.



Revision Date
7/29/13

N.A.D. 1983 Coordinates
(1996 Adjustment)

| County Project Coordinates | |
|----------------------------|--------------------|
| Northing | <u>208945.8459</u> |
| Easting | <u>520994.2647</u> |
| Date | <u>7/08/02</u> |

I hereby certify that this United States public land survey monument record is correct and complete to the best of my knowledge and belief.

Larry D. Hoium Date 7/29/13

Larry D. Hoium, Anoka County Surveyor

Minnesota License Number 18165