

CERTIFICATE OF LOCATION OF GOVERNMENT CORNER

County of Anoka

State of Minnesota

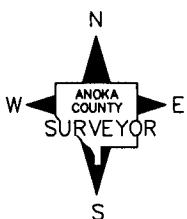
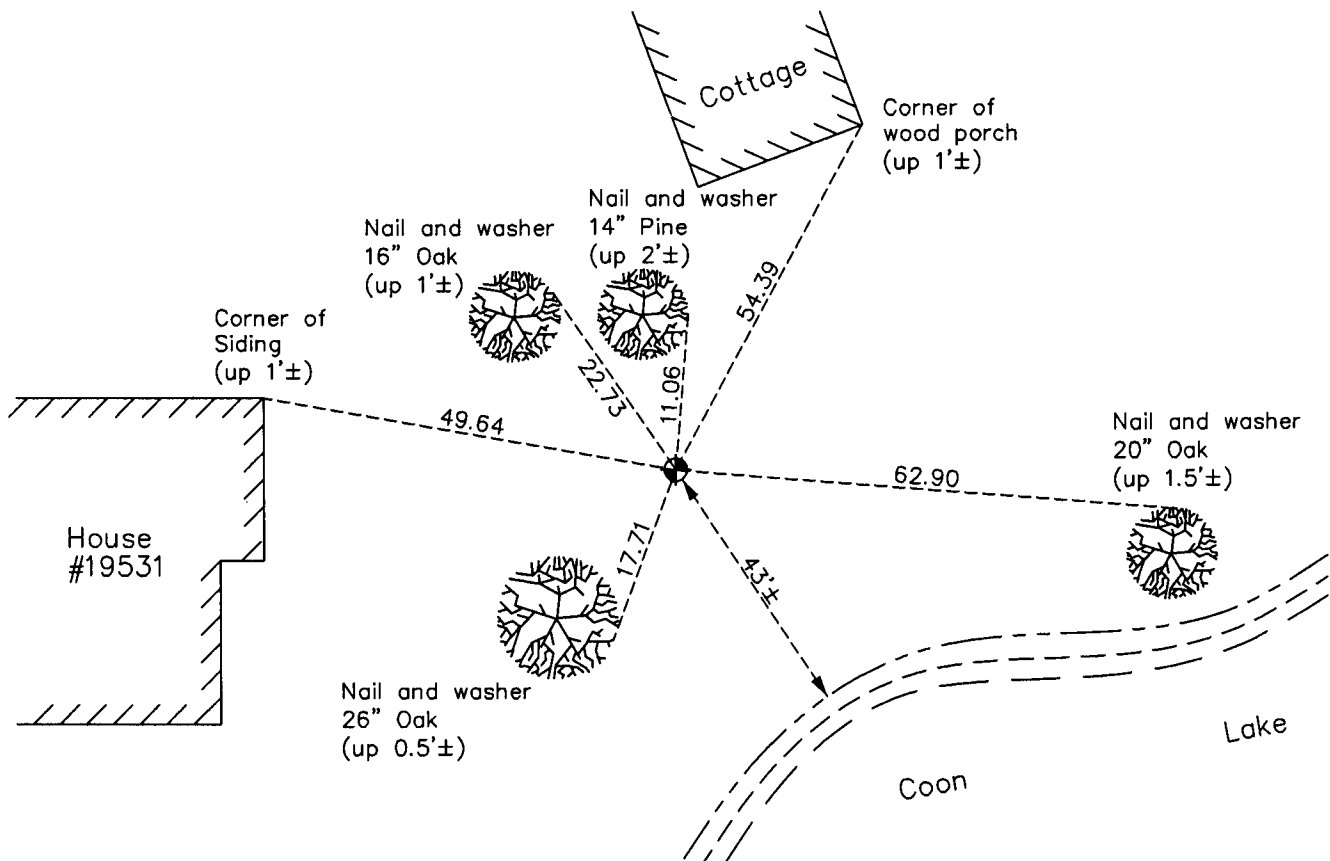
Meander Corner of Sec. 25 Township 33 Range 23 (Meander Corner No. 14—on east line of section)

On the 15th day of June, 1960, the described corner was evidenced by a concrete monument

and to perpetuate the location of said corner, at the exact location thereof, a permanent marker was placed consisting of a cast iron monument

AND on the 14th day of February, 2013, said permanent marker was found and the ties were updated

Updated reference ties are as shown below.



Revision Date

8/02/13

N.A.D. 1983 Coordinates
(1996 Adjustment)

County Project Coordinates	
Northing	205316.9253
Easting	531850.9350
Date	7/15/02

I hereby certify that this United States public land survey monument record is correct and complete to the best of my knowledge and belief.

Larry D. Hoium Date 8/02/13
 Larry D. Hoium, Anoka County Surveyor
 Minnesota License Number 18165