

CERTIFICATE OF LOCATION OF GOVERNMENT CORNER

County of Anoka

State of Minnesota

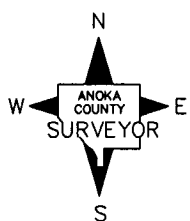
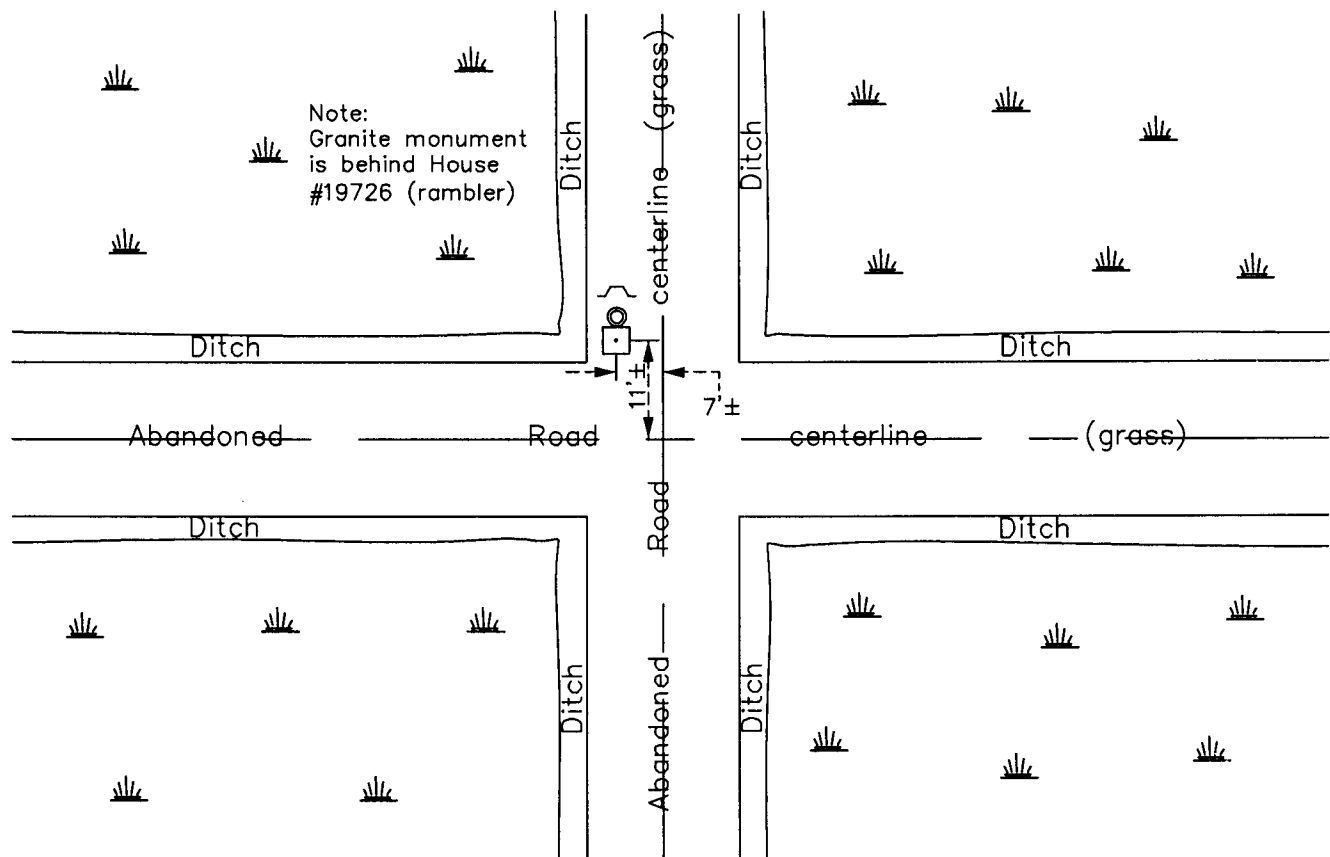
Northwest Corner of Sec. 25 Township 33 Range 23

On the 24th day of May, 1962, the described corner was evidenced by a granite monument from resurvey

and to perpetuate the location of said corner, at the exact location thereof, a permanent marker was placed consisting of the same granite monument with a 3/4" iron pipe and a sign and post on the north side

AND on the 17th day of January, 2013, said permanent marker was found leaning slightly West. Position was verified using VRS and was found to be within tolerances.

Updated reference ties are as shown below.



Revision Date

8/05/13

N.A.D. 1983 Coordinates
(1996 Adjustment)

County Project Coordinates

Northing 206214.9286

Easting 526467.6876

Date 4/23/03

I hereby certify that this United States public land survey monument record is correct and complete to the best of my knowledge and belief.

Larry D. Hoium Date 8/05/13

Larry D. Hoium, Anoka County Surveyor

Minnesota License Number 18165