

CERTIFICATE OF LOCATION OF GOVERNMENT CORNER

County of Anoka

State of Minnesota

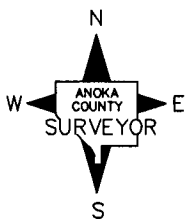
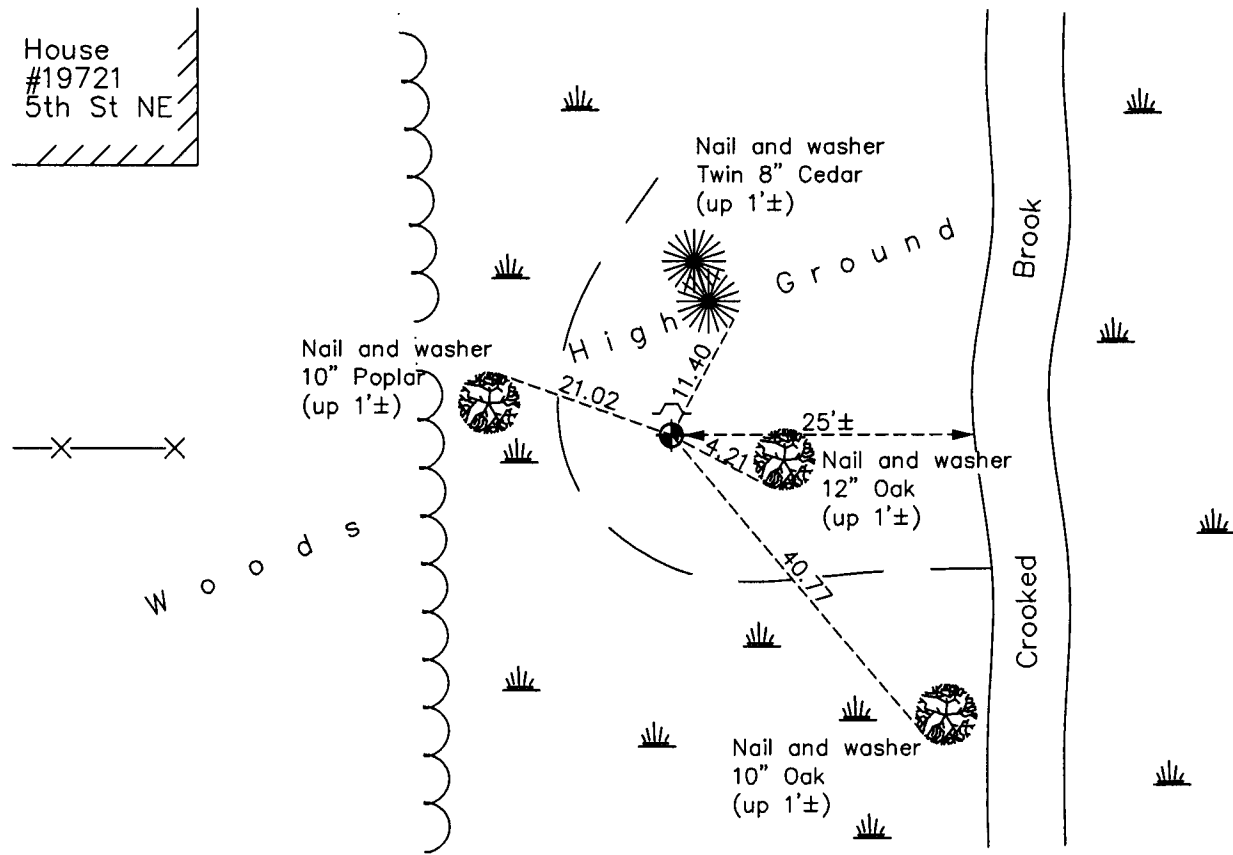
South $\frac{1}{4}$ Corner of Sec. 19 Township 33 Range 23

On the 5th day of May, 1972, the described corner was evidenced by a $\frac{3}{4}$ " iron pipe

and to perpetuate the location of said corner, at the exact location thereof, a permanent marker was placed consisting of a cast iron monument with a sign and post on the north side

AND on the 1st day of March, 2013, said permanent marker was found up 0.2'± and the ties were updated

Updated reference ties are as shown below.



Revision Date
8/13/13

N.A.D. 1983 Coordinates
(1996 Adjustment)

County Project Coordinates	
Northing	206397.9688
Easting	502406.0134
Date	3/25/03

I hereby certify that this United States public land survey monument record is correct and complete to the best of my knowledge and belief.

Larry D. Hoium Date 8/13/13

Larry D. Hoium, Anoka County Surveyor
Minnesota License Number 18165