

CERTIFICATE OF LOCATION OF GOVERNMENT CORNER

County of Anoka

State of Minnesota

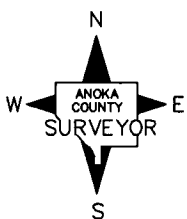
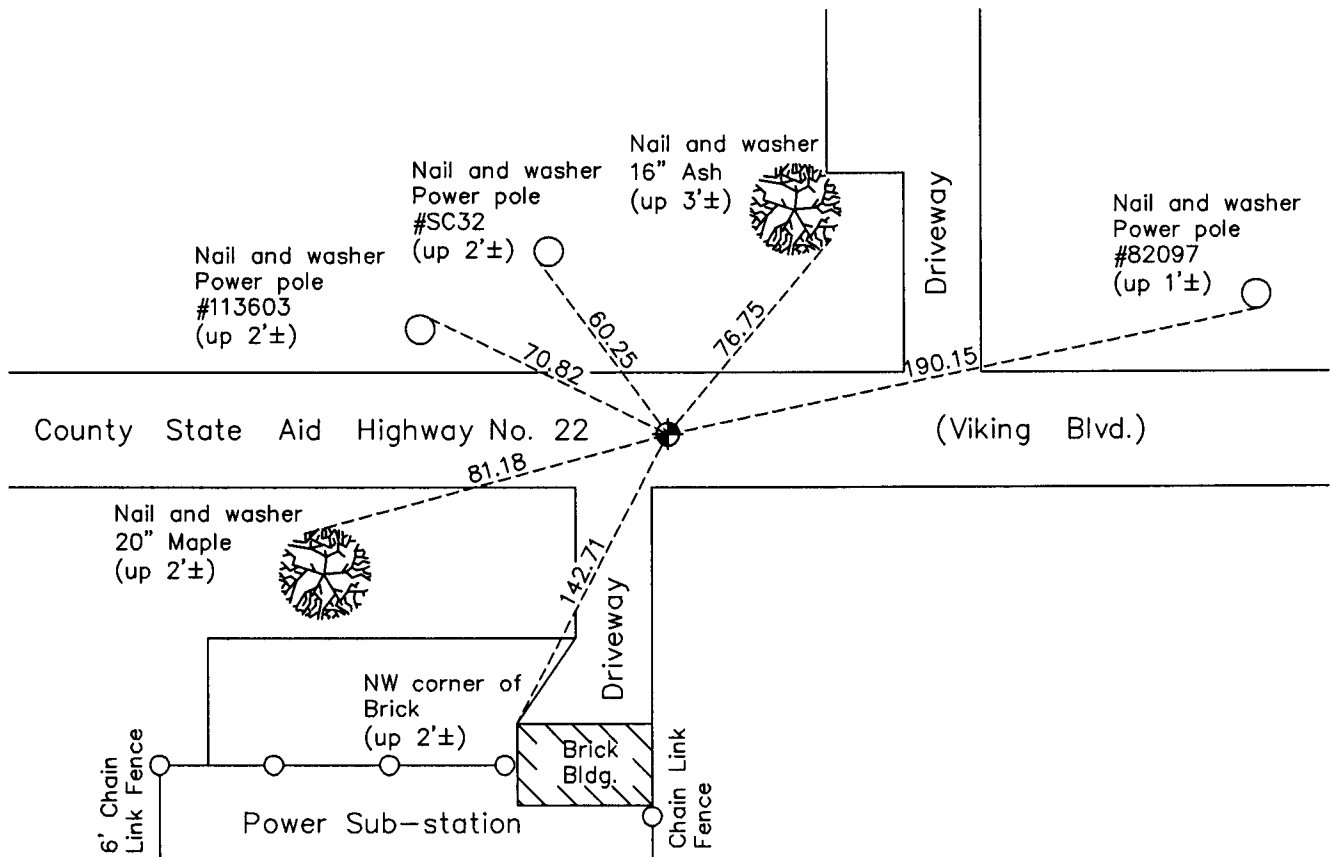
West 1/4 Corner of Sec. 29 Township 33 Range 23

On the 1st day of July, 1963, the described corner was evidenced by a cast iron monument set by N.C. Hoium

and to perpetuate the location of said corner, at the exact location thereof, a permanent marker was placed consisting of the same cast iron monument

AND on the 20th day of February, 2013, said permanent marker was found and the ties were updated

Updated reference ties are as shown below.



Revision Date
 8/14/13

N.A.D. 1983 Coordinates
 (1996 Adjustment)

| County Project Coordinates | |
|----------------------------|-------------|
| Northing | 203721.3611 |
| Easting | 505158.1689 |
| Date | 5/08/02 |

I hereby certify that this United States public land survey monument record is correct and complete to the best of my knowledge and belief.

Larry D. Hoium Date 8/14/13
 Larry D. Hoium, Anoka County Surveyor
 Minnesota License Number 18165