

CERTIFICATE OF LOCATION OF GOVERNMENT CORNER

County of Anoka

State of Minnesota

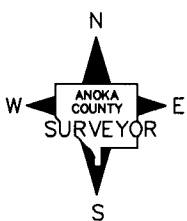
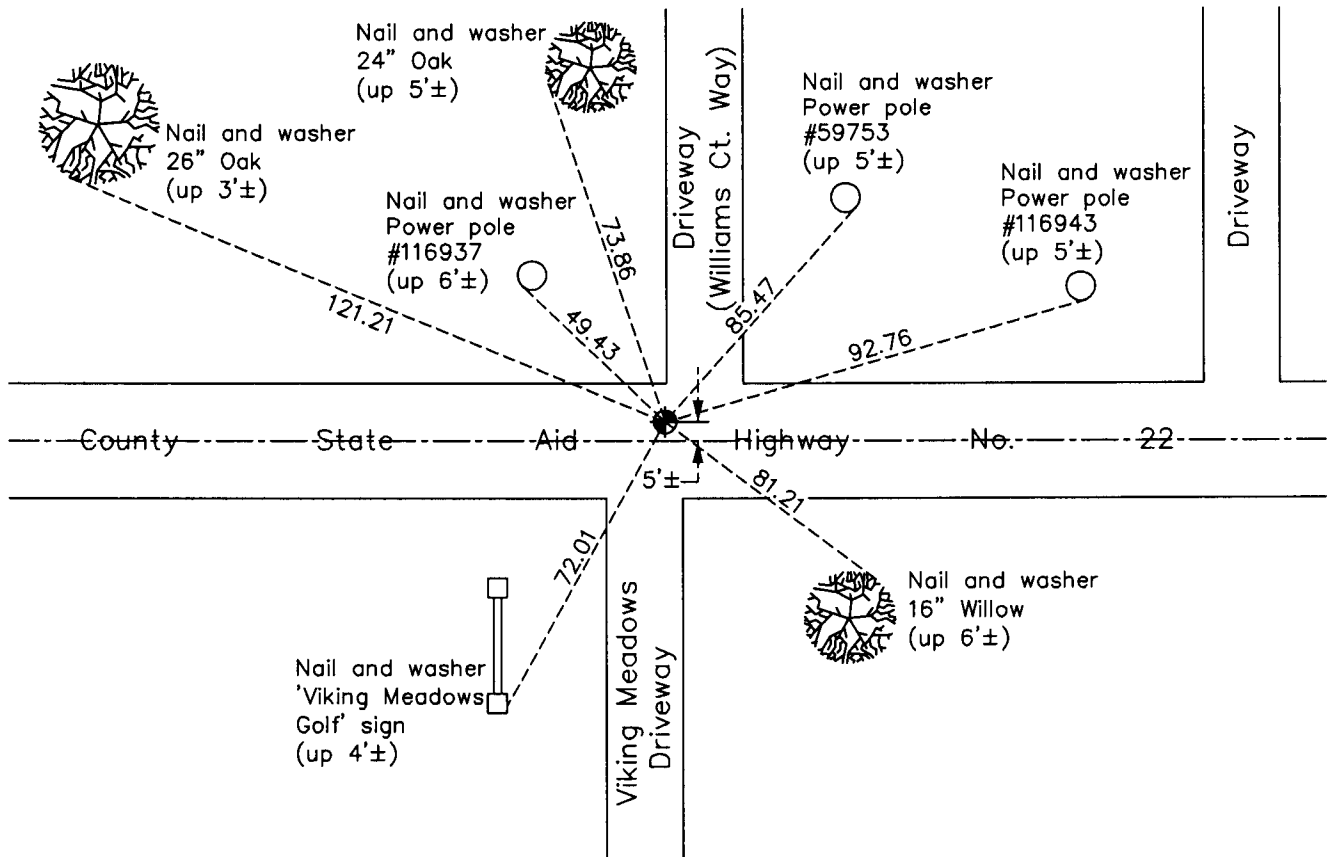
East 1/4 Corner of Sec. 29 Township 33 Range 23

On the 1st day of July, 1963, the described corner was evidenced by a cast iron monument set by N.C. Hoium

and to perpetuate the location of said corner, at the exact location thereof, a permanent marker was placed consisting of the same cast iron monument

AND on the 5th day of December, 2012, said permanent marker was found and the ties were updated. On Sept. 21, 2012 a 6" partial CIM was set in concrete on top of in-place CIM.

Updated reference ties are as shown below.



Revision Date
11/25/13

N.A.D. 1983 Coordinates
(1996 Adjustment)

County Project Coordinates	
Northing	<u>203668.4399</u>
Easting	<u>510468.9342</u>
Date	<u>5/08/02</u>

I hereby certify that this United States public land survey monument record is correct and complete to the best of my knowledge and belief.

Larry D. Hoium Date 11/25/13

Larry D. Hoium, Anoka County Surveyor

Minnesota License Number 18165