

CERTIFICATE OF LOCATION OF GOVERNMENT CORNER

County of Anoka

State of Minnesota

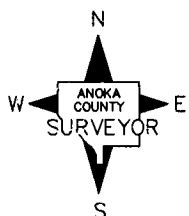
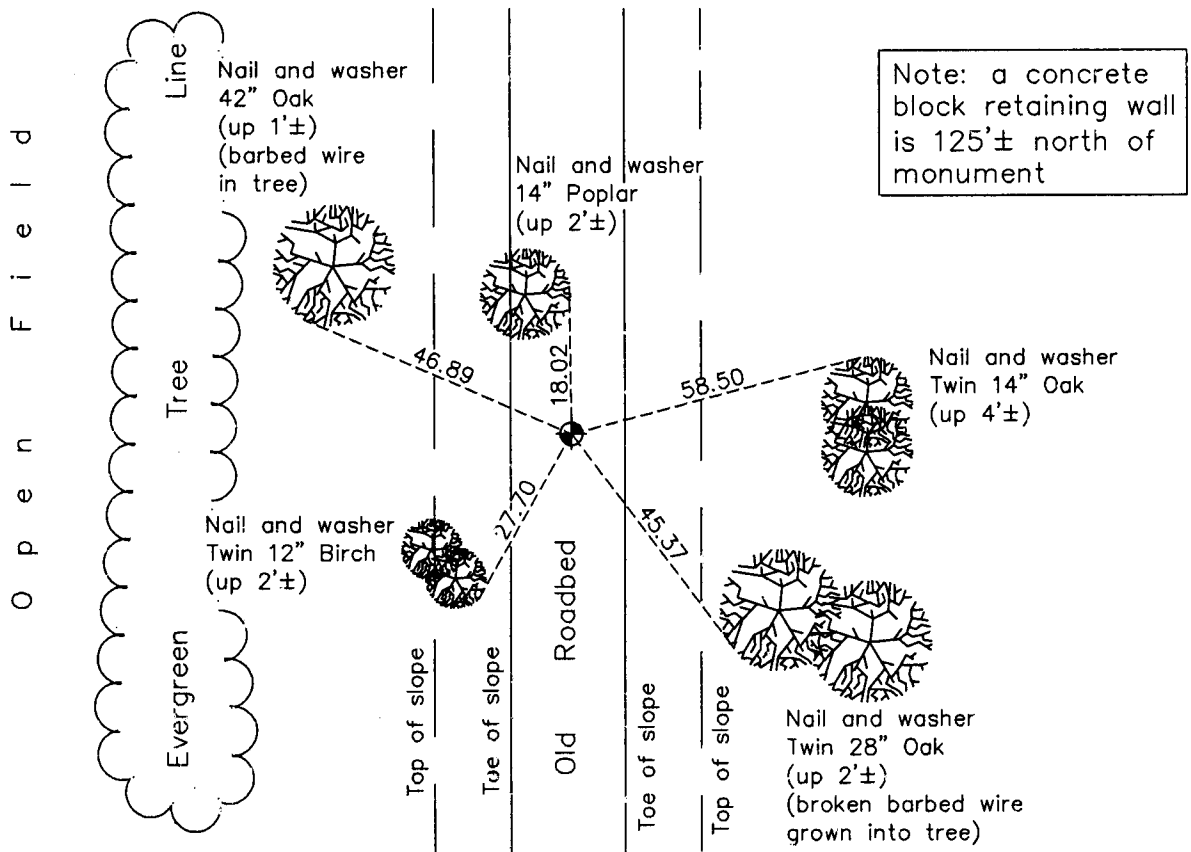
West 1/4 Corner of Sec. 25 Township 33 Range 23

On the 25th day of May, 1962, the described corner was evidenced by area resurvey

and to perpetuate the location of said corner, at the exact location thereof, a permanent marker was placed consisting of a cast iron monument set 0.3'± above ground surface

AND on the 12th day of February, 2013, said permanent marker was found and the ties were updated

Updated reference ties are as shown below.



Revision Date

8/29/13

N.A.D. 1983 Coordinates
(1996 Adjustment)

County Project Coordinates	
Northing	<u>203569.1264</u>
Easting	<u>526508.2987</u>
Date	<u>3/25/03</u>

I hereby certify that this United States public land survey monument record is correct and complete to the best of my knowledge and belief.

Larry D. Hoium Date 8/29/13

Larry D. Hoium, Anoka County Surveyor

Minnesota License Number 18165