

CERTIFICATE OF LOCATION OF GOVERNMENT CORNER

County of Anoka

State of Minnesota

Meander Corner of Sec. 25 Township 33 Range 23

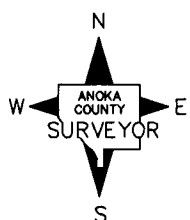
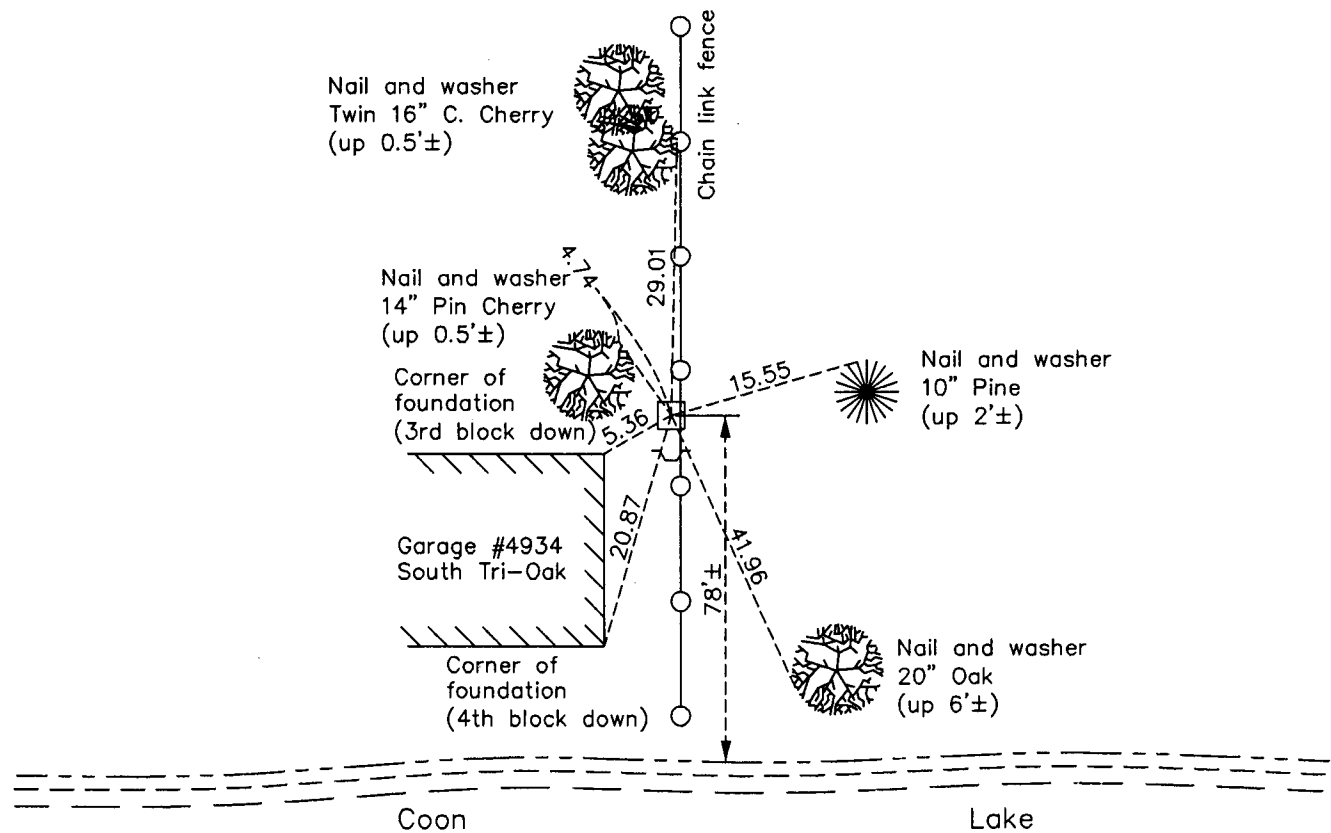
(Meander Corner No. 15—on east line of section)

On the 15th day of June, 1960, the described corner was evidenced by a concrete monument

and to perpetuate the location of said corner, at the exact location thereof, a permanent marker was placed consisting of the same concrete monument with a sign and post on the south side

AND on the 22nd day of February, 2013, said permanent marker was found down 0.2'± and 0.5'± west of fence and the ties were updated. Top of monument is chipped.

Updated reference ties are as shown below.



Revision Date

8/29/13

N.A.D. 1983 Coordinates
(1996 Adjustment)

County Project Coordinates	
Northing	203832.9391
Easting	531840.1648
Date	7/15/02

I hereby certify that this United States public land survey monument record is correct and complete to the best of my knowledge and belief.

Larry D. Hoium Date 8/29/13

Larry D. Hoium, Anoka County Surveyor

Minnesota License Number 18165