

# CERTIFICATE OF LOCATION OF GOVERNMENT CORNER

County of Anoka                      State of Minnesota

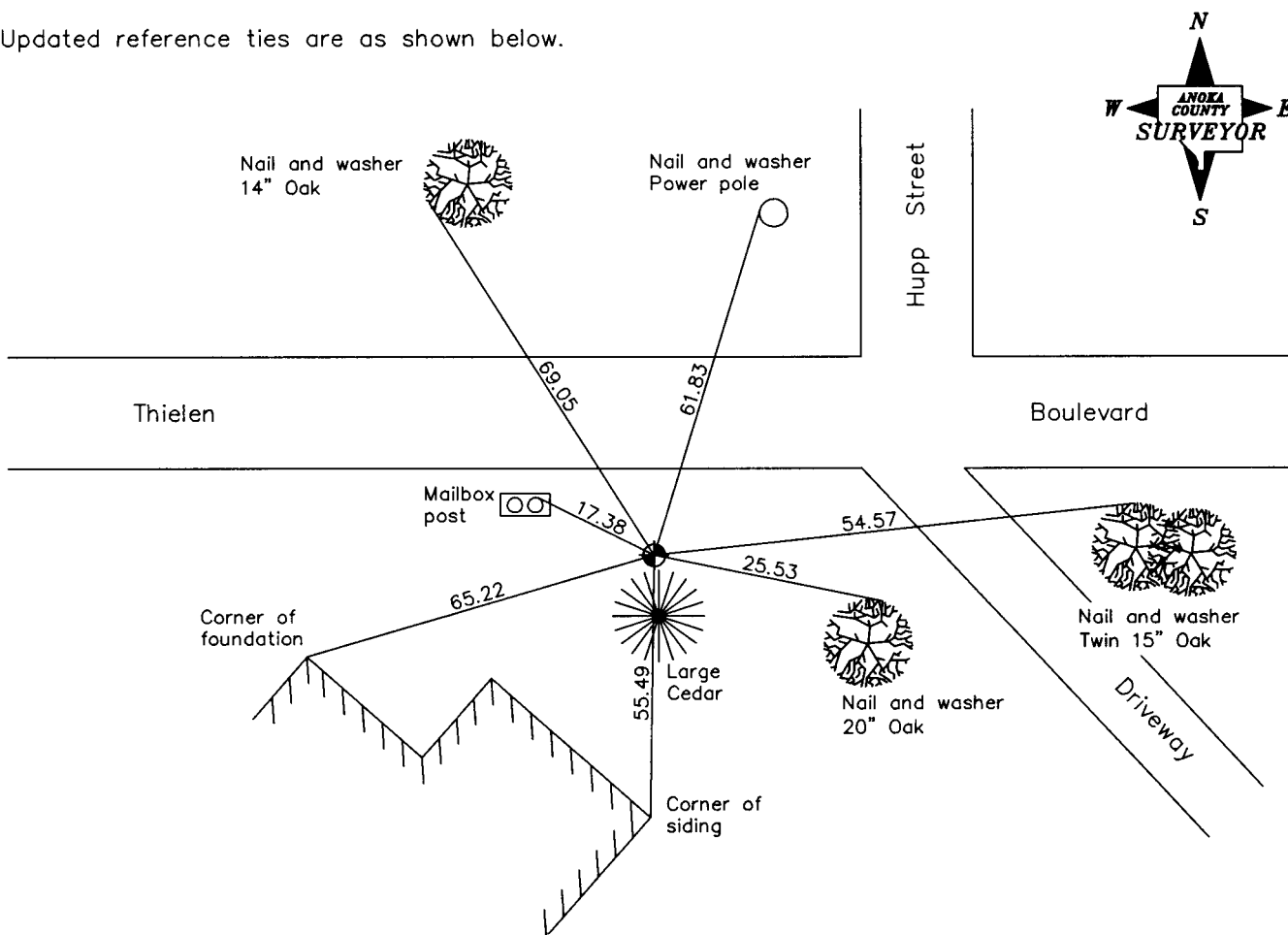
Southwest Corner of Sec. 25 Township 33 Range 23  
 (Southwest cor. of Gov't. Lot 7)

On the 19th day of October, 1962, the described corner was evidenced by a cast iron monument

and to perpetuate the location of said corner, at the exact location thereof, a permanent marker was placed consisting of a cast iron monument

AND on the 11th day of June, 2002, said permanent marker was found and the ties were updated

Updated reference ties are as shown below.



Revised date
8/12/92
7/31/97
6/11/02

N.A.D. 1983 Coordinates (1996 Adjustment)	
County Project Coordinates	
Northing	<u>200915.7209</u>
Easting	<u>527868.9066</u>
Date	<u>6/11/02</u>

I hereby certify that this United States public land survey monument record is correct and complete to the best of my knowledge and belief.

*Larry D. Hoiium*                      Date 6/11/02

\_\_\_\_\_  
 Larry D. Hoiium, Anoka County Surveyor

Minnesota License Number 18165