

# CERTIFICATE OF LOCATION OF GOVERNMENT CORNER

County of Anoka

State of Minnesota

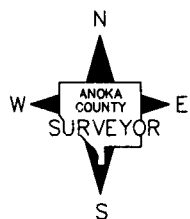
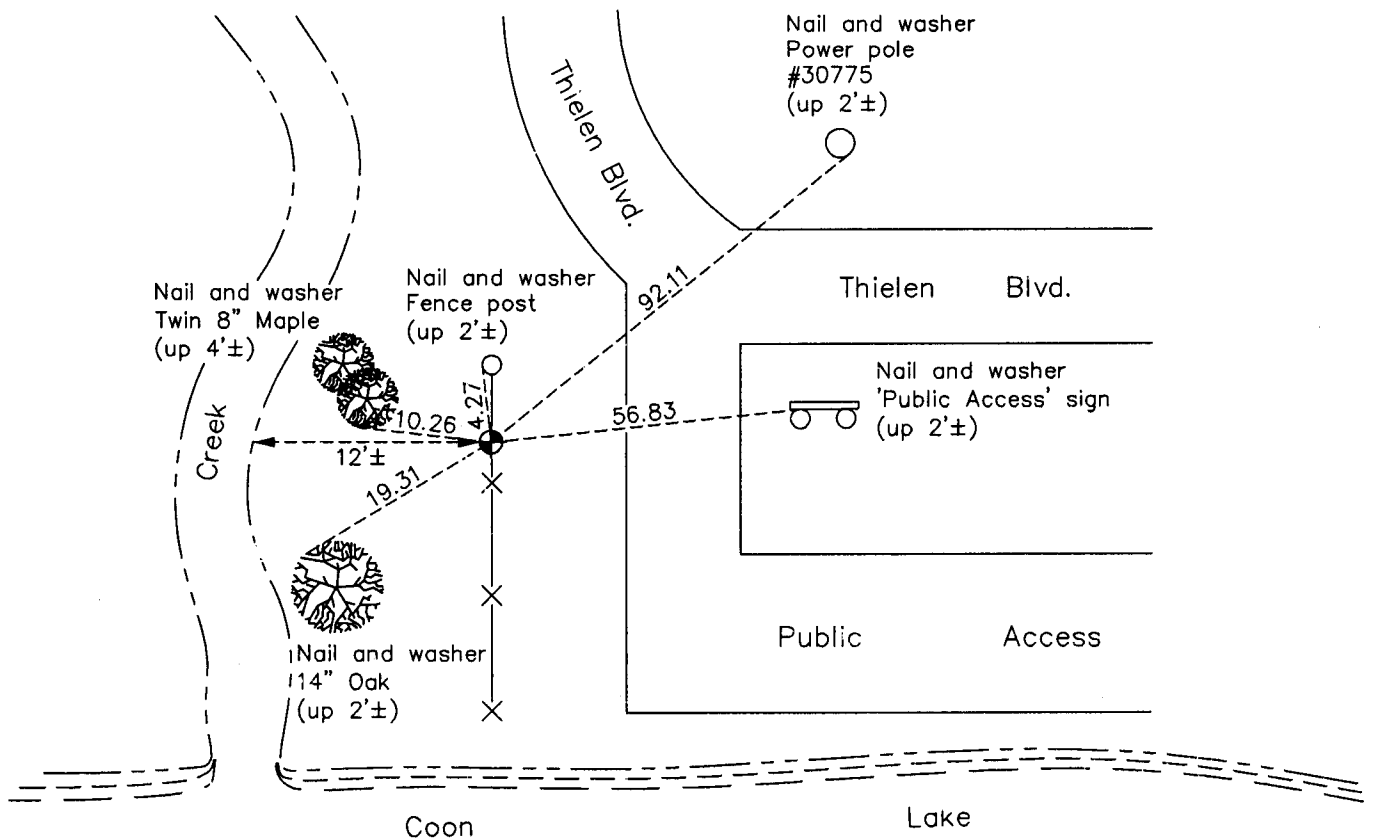
## Meander Corner of Sec. 25 Township 33 Range 23 (Meander Corner No. 11—on west line of section)

On the 28th day of December, 1962, the described corner was evidenced by area resurvey

and to perpetuate the location of said corner, at the exact location thereof, a permanent marker was placed consisting of a cast iron monument

AND on the 5th day of December, 2012, said permanent marker was found down 0.5'± and the ties were updated

Updated reference ties are as shown below.



Revision Date

8/30/13

N.A.D. 1983 Coordinates  
(1996 Adjustment)

County Project Coordinates

Northing 201220.6394

Easting 526543.6953

Date 6/11/02

I hereby certify that this United States public land survey monument record is correct and complete to the best of my knowledge and belief.

*Larry D. Hoium* Date 8/30/13

Larry D. Hoium, Anoka County Surveyor

Minnesota License Number 18165